

TATES

020 7602 6020



Sinclair Road, London W14 0NJ

£1,950 Per month

- Spacious one bedroom flat
- Large living room with dining area
- Private patio garden
- Within walking distance of Shepherds Bush and Blythe Village
- Available early September
- Furnished
- Moment from Kensington Olympia
- Energy Efficiency Rating Current Band: C

Sinclair Road, W14
 Approximate gross internal area
 684 sq ft / 63.5 sq m

Key:
 CH - Ceiling Height

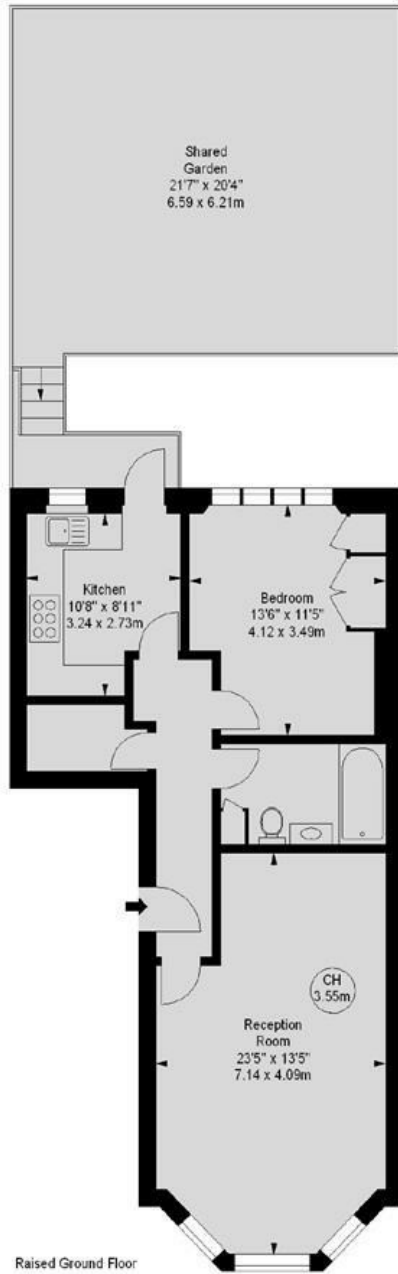
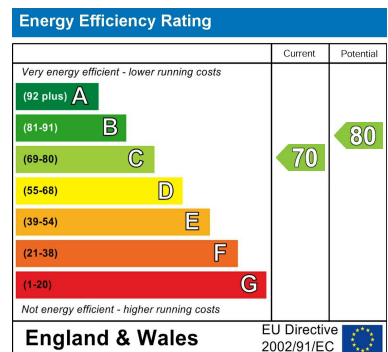


Illustration For Identification Purposes Only. Not To Scale
 *Floorplan Drawn According To RICS Guidelines

Whilst these particulars are produced in good faith and are believed to be correct, no guarantee is given, nor any responsibility accepted, by Tates nor by any of its representatives, for their accuracy. The particulars do not constitute part of any offer or contract, and it is recommended that such things as measurements, condition, structure, services, appliances, fixtures and fittings and facilities are all independently assessed by the prospective purchaser or renter of the subject property prior to committing to any contract.



135 Hammersmith Road, West Kensington, London W14 0QL mail@tatesestates.co.uk tatesestates.co.uk

Tates (Agents) Ltd. Registered in England and Wales No. 02356337
 Registered Office: Imperial House, 8 Keane Street, London WC2B 4AS

