

# TATES

020 7602 6020



## Fitzgeorge Avenue, London W14 0SW

**£3,950 Per month**

- Three double bedrooms
- Beautifully presented
- Portered gated mansion block
- Unfurnished
- Secure on site storage
- Two bathrooms
- Fourth floor with lift
- Basement storage
- Off street gated parking
- Energy Efficiency Rating Current Band: D

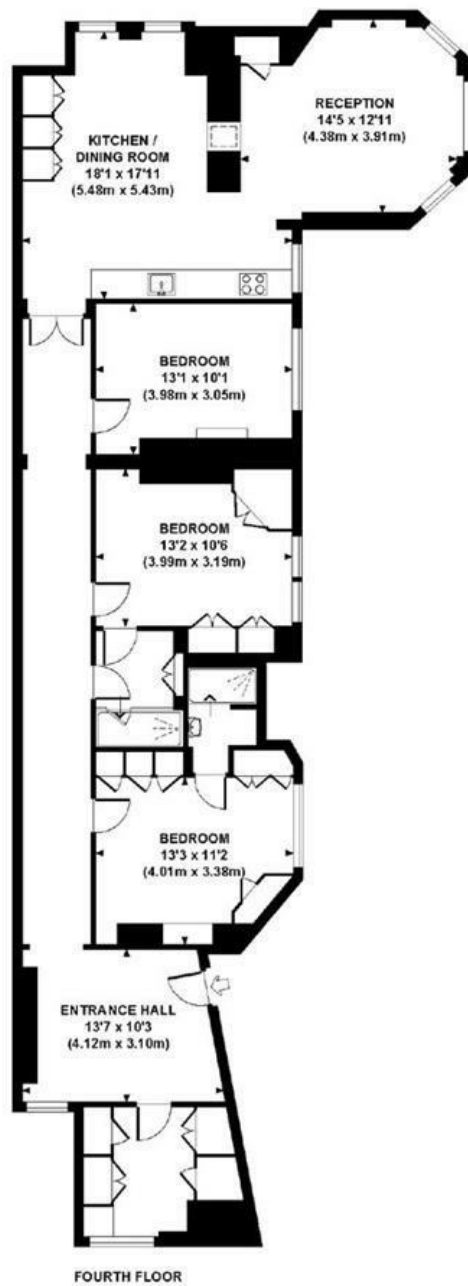
# FITZGEORGE AVENUE, W14

Approx. gross internal area

1392 Sq Ft. / 129.3 Sq M.

Representation of current layout.

Not to scale.



Whilst these particulars are produced in good faith and are believed to be correct, no guarantee is given, nor any responsibility accepted, by Tates nor by any of its representatives, for their accuracy. The particulars do not constitute part of any offer or contract, and it is recommended that such things as measurements, condition, structure, services, appliances, fixtures and fittings and facilities are all independently assessed by the prospective purchaser or renter of the subject property prior to committing to any contract.

Energy Efficiency Rating		Current	Potential
Very energy efficient - lower running costs			
(92 plus) <b>A</b>			
(81-91) <b>B</b>			
(69-80) <b>C</b>			
(55-68) <b>D</b>		55	63
(39-54) <b>E</b>			
(21-38) <b>F</b>			
(1-20) <b>G</b>			
Not energy efficient - higher running costs			
<b>England &amp; Wales</b>		EU Directive 2002/91/EC	

135 Hammersmith Road, West Kensington, London W14 0QL

mail@tatesestates.co.uk

tatesestates.co.uk

Tates (Agents) Ltd. Registered in England and Wales No. 02356337

Registered Office: Imperial House, 8 Keane Street, London WC2B 4AS

