

TATES

020 7602 6020



Warwick House, Windsor Way, London W14 0UQ

Offers over £900,000

- Two double bedrooms
- Spacious reception
- Balcony
- Underground parking
- Close to Barons Court & Hammersmith tube links
- Two bathrooms (one ensuite)
- Modern kitchen
- Gated development
- Brook Green
- Energy Efficiency Rating Current Band: C

Warwick House, W14
 Approximate gross internal area
 911 sq ft / 84.63 sq m

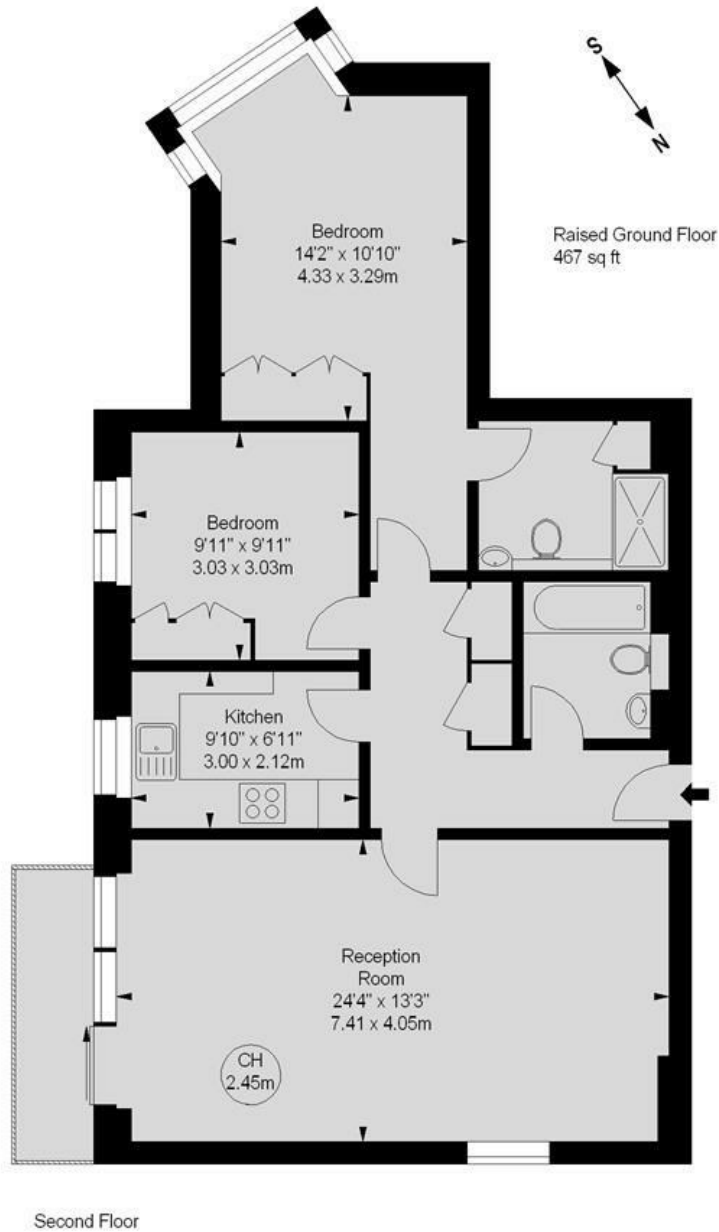


Illustration For Identification Purposes Only. Not To Scale
 *Floorplan Drawn According To RICS Guidelines

Whilst these particulars are produced in good faith and are believed to be correct, no guarantee is given, nor any responsibility accepted, by Tates nor by any of its representatives, for their accuracy. The particulars do not constitute part of any offer or contract, and it is recommended that such things as measurements, condition, structure, services, appliances, fixtures and fittings and facilities are all independently assessed by the prospective purchaser or renter of the subject property prior to committing to any contract.

Energy Efficiency Rating		
	Current	Potential
Very energy efficient - lower running costs		
(92 plus) A		
(81-91) B	80	82
(69-80) C		
(55-68) D		
(39-54) E		
(21-38) F		
(1-20) G		
Not energy efficient - higher running costs		
England & Wales		EU Directive 2002/91/EC

135 Hammersmith Road, West Kensington, London W14 0QL mail@tatesestates.co.uk tatesestates.co.uk

Tates (Agents) Ltd. Registered in England and Wales No. 02356337
 Registered Office: Imperial House, 8 Keane Street, London WC2B 4AS

