

Cromwells



Avon Close, Worcester Park, KT4 7AH
£400,000

Offered with NO ONWARD CHAIN is this delightful 2 bedroom, ground floor maisonette with private garden. Offering the new owners, 2 double bedrooms, great size lounge /diner, modern & recently fitted kitchen and bathroom, along with a private garden and C Rated EPC. Ideally located within walking distance of Worcester Park mainline station (zone 4) with its great links into London, along with a well stocked high street and a selection of great schools & nurseries. Internal viewing highly recommended.

Ground Floor · 2 Double Bedrooms ·
Modern & Recently Installed Kitchen & Bathroom · Private Rear
Garden

Front Door -

Hallway -

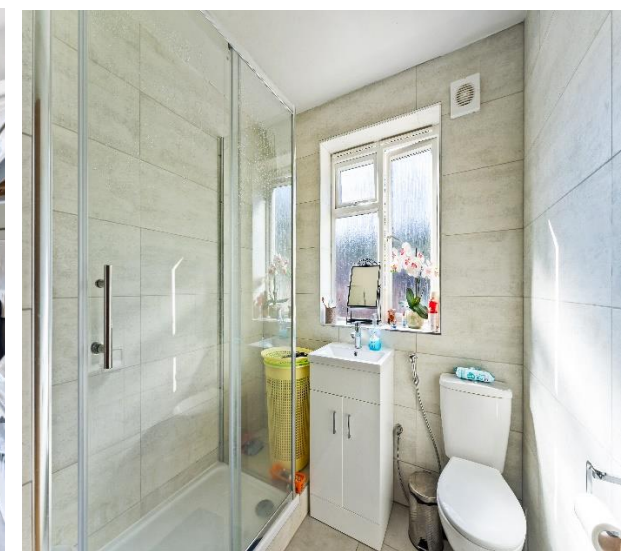
Wood-effect flooring, double-panel radiator, wall-mounted fuse board and electricity meter, understairs storage, door to further storage cupboard, door to:

Lounge/Diner - 14' 8" x 12' 10" (4.48m x 3.92m)

Double glazed windows to front aspect, double-panel radiator, carpeted.

Kitchen - 9' 11" x 7' 9" (3.01m x 2.37m)

Modern range of white wall-mounted units with matching cupboards and drawers below, roll top work surfaces, inset stainless steel 1.5 bowl sink and drainer, integrated oven with gas hob and extractor fan above, integrated washing machine, space for fridge freezer, cupboard housing central heating boiler, double glazed window to rear aspect, door to garden.



Showroom - 6' 10" x 6' 8" (2.08m x 2.03m)

Modern 3 piece suite comprising a large shower, low level WC, wash hand basin with storage below, double glazed window to rear, tiled walls and floor, chrome towel radiator.

Bedroom 1 - 14' 8" x 10' 6" (4.48m x 3.20m)

Double glazed window to rear aspect, carpeted, double-panel radiator.

Bedroom 2 - 11' 1" x 9' 11" (3.38m x 3.03m)

Double glazed window to front aspect, carpeted, radiator.

Rear Garden -

Patio area, tap, fence-enclosed, lawn area, gated side access, light.

Front

Lawn area, access to side.



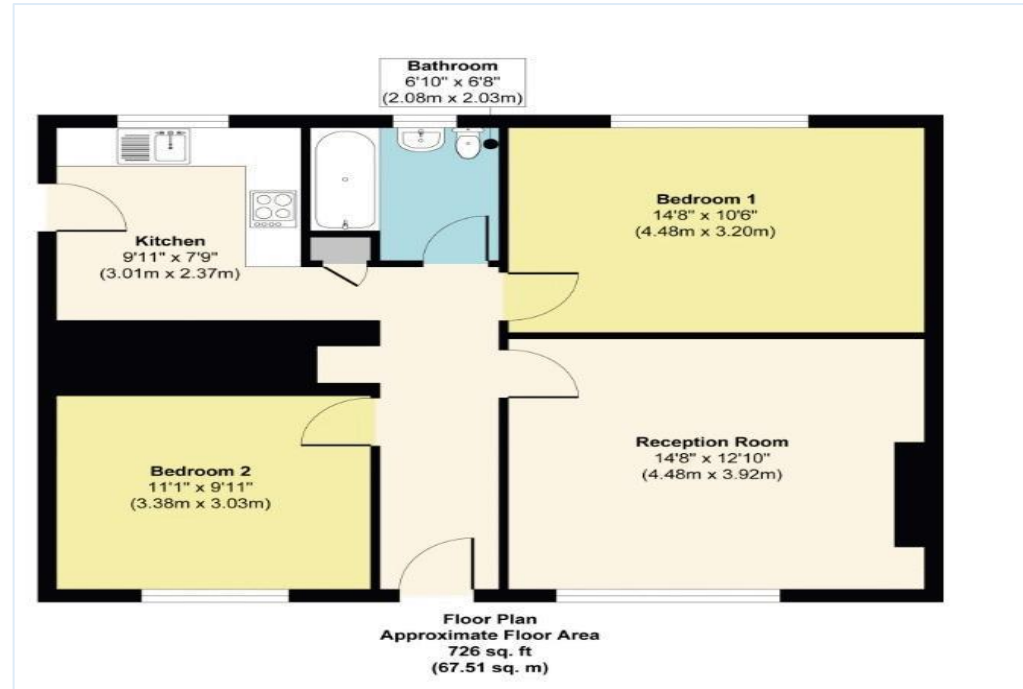
Council Tax – C tbc
 Tenure - Leasehold
 Square Foot – 726 Sq Ft (67.51 Sq M)

Brabham Court, 45 Central Road
 Worcester Park
 Surrey
 KT4 8EA

020 8337 6603
 admin@cromwellswpark.com

Disclaimer

These particulars are not an offer or contract, nor part of one. You should not rely on statements made by Cromwells in the particulars or by word of mouth or in writing (“information”) as being factually accurate about the property, its condition or value. Neither Cromwells nor any joint agent has authority to make representations about the property, and accordingly any information given is entirely without responsibility on the part of the agents, seller(s) or lessor(s). Photographs show only certain parts of the property as they appeared at the time they were taken. Areas, measurements and distances are given as an approximate only. Any reference to alterations to or use of, any part of the property does not mean that any necessary planning, building regulations or other consents have been obtained



Score	Energy rating	Current	Potential
92+	A		
81-91	B		
69-80	C	69 C	75 C
55-68	D		
39-54	E		
21-38	F		
1-20	G		

