



## Eskdale Lodge

Lexham Gardens

Amersham

HP6 5JJ

Monthly Rental Of £1,450

- Spacious two bedroom apartment available now.
- Walking distance to Amersham town centre and Grammar school
- Freshly decorated throughout, balcony
- Garage and off road parking, new boiler
- Amersham train station close by
- EPC Rating C Council Tax Band D



01494 864225

[lettings@wyecountry.co.uk](mailto:lettings@wyecountry.co.uk)

[wyecountry.co.uk](http://wyecountry.co.uk)



# Eskdale Lodge Lexham Gardens Amersham HP6 5JJ

## PROPERTY FACTS

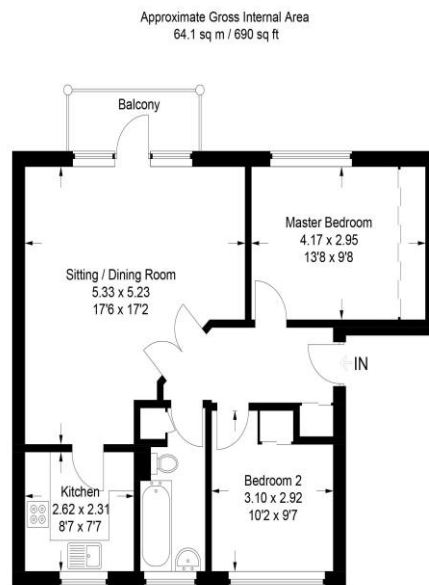
This spacious top (first) floor apartment is located close to Amersham town centre, Dr Challoners Grammar school and the underground and mainline train stations. Featuring two double bedrooms with built in wardrobes, a large living room with a balcony, a separate kitchen, and a bathroom with a shower over the bath. The property also benefits from an entryphone system, garage and off road parking, and overlooks communal gardens. Available now on an unfurnished basis.

## LOCATION FACTS

Amersham is a vibrant Chiltern town with a good range of shops, restaurants and leisure facilities. Situated on the edge of the Chiltern Hills AONB, Amersham has excellent transport links to London via Chiltern Rail, the Metropolitan Line and the wider motorway network.

## DIRECTIONS

From Amersham train station proceed to the top of Hill Avenue at the double roundabouts go right and immediately left along the Chesham Road. At the next roundabout turn right (2nd exit) along the A4154. Lexham Gardens is the first road on the left and Eskdale Lodge will be found immediately on the left.



### First Floor

This plan is for layout guidance only. Not drawn to scale unless stated. Windows and door openings are approximate. Whilst every care is taken in the preparation of this plan, please check all dimensions, shapes and compass bearings before making any decisions reliant upon them.  
© CJ Property Marketing Ltd

