



Fairacres

Prestwood

HP16 0LF

Monthly Rental Of £1,795

- 3 bedroom terraced house
- Lounge/diner, refitted kitchen, cloakroom and utility room
- Garage and car port to the rear
- Decked garden
- Centrally located with easy access to all village amenities
- EPC rating C, Council Tax Band C



01494 864225

lettings@wyecountry.co.uk

wyecountry.co.uk

Fairacres Prestwood HP16 0LF

PROPERTY FACTS

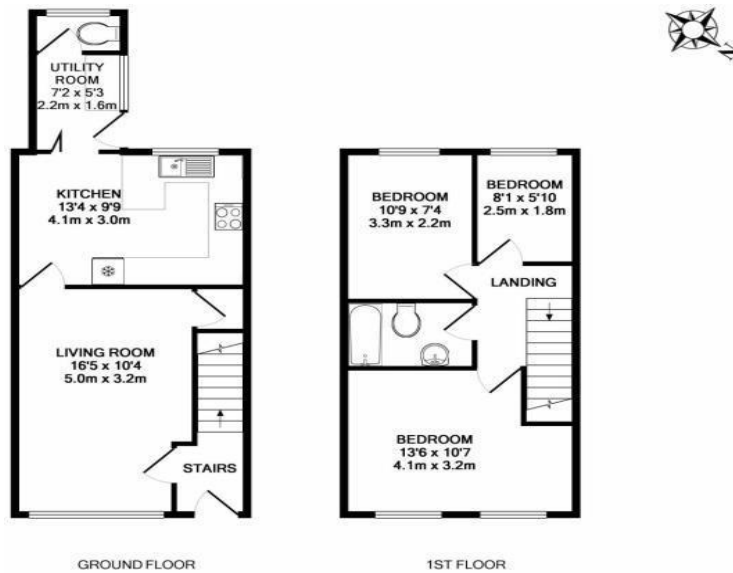
A three bed mid terraced house situated in the heart of the village within easy walking distance of the shops and schools. With the added bonus of a downstairs cloakroom and utility room plus a garage with power and a car port to the rear this is an excellent family home available mid September on an unfurnished basis, for long term rental.

LOCATION FACTS

Prestwood village centre has an excellent range of day to day facilities available including a variety of local shops, ie Butchers, Bakers, Newsagents, Post Office, Chemist, Florist and Supermarkets, together with Doctors' and Dentists' surgeries. There are local schools for children up to the age of 11 years. For secondary education, Prestwood lies in the catchment area for the Amersham/Chesham Grammar Schools and The Royal Grammar School for Boys in High Wycombe. The Misbourne School in Great Missenden also offers schooling for 11-18 year olds. Private schools close by include The Gateway in Great Missenden and Pipers Corner for girls in Great Kingshill. Nearby Great Missenden also offers a main line rail link into Central London which is ideal for the commuter. For more extensive requirements both High Wycombe and Amersham are approximately 4/5 miles from Prestwood

DIRECTIONS

From our offices in Great Missenden turn left and left again at the mini roundabout onto Martinsend Lane continuing to Prestwood. Turn left into Nairdwood Lane (there is a garage on the corner). Take the second turning right into Fairacres. Go to the bottom of the road and where the road bends the property can be found on the lefthand side behind the trees indicated by our Wye Partnership 'To Let' board.



Whilst every attempt has been made to ensure the accuracy of the floor plan contained here, measurements of doors, windows, rooms and any other items are approximate and no responsibility is taken for any error, omission, or mis-statement. This plan is for illustrative purposes only and should be used as such by any prospective purchaser. The services, systems and appliances shown have not been tested and no guarantee as to their operability or efficiency can be given.
Made with Metropix ©2017

