



## Fairacres

Prestwood

HP16 0LF

Monthly Rental Of £1,595

- Lovely two bedroom house
- Available early June
- Eat-in kitchen, separate lounge
- South westerly facing rear garden
- Garage and carport
- EPC Rating: E Council Tax Band: C



01494 864225

[lettings@wyecountry.co.uk](mailto:lettings@wyecountry.co.uk)

[wyecountry.co.uk](http://wyecountry.co.uk)



# Fairacres Prestwood HP16 0LF

## PROPERTY FACTS

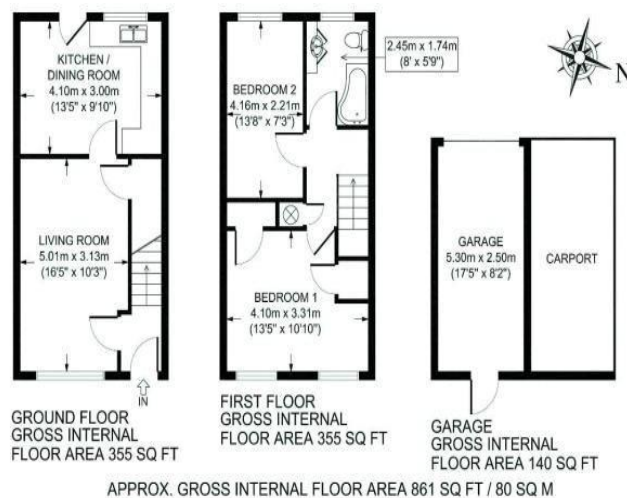
A very smart two bedroom terraced house situated in a popular and quiet residential location in Prestwood. The modern kitchen includes a cooker, washing machine, fridge and freezer with under counter space for a tumble drier should a tenant wish to fit one themselves. Upstairs are two bedrooms and the family bathroom. Outside, the rear garden has a south westerly aspect with access to the garage and carport.

## LOCATION FACTS

Prestwood village centre has an excellent range of day to day facilities available including a variety of local shops, ie Butchers, Bakers, Newsagents, Post Office, Chemist, Florist and Supermarkets, together with Doctors' and Dentists' surgeries. There are local schools for children up to the age of 11 years. For secondary education, Prestwood lies in the catchment area for the Amersham/Chesham Grammar Schools and The Royal Grammar School for Boys in High Wycombe. The Misbourne School in Great Missenden also offers schooling for 11-18 year olds. Private schools close by include The Gateway in Great Missenden and Pipers Corner for girls in Great Kingshill. Nearby Great Missenden also offers a main line rail link into Central London which is ideal for the commuter. For more extensive requirements both High Wycombe and Amersham are approximately 4/5 miles from Prestwood

## DIRECTIONS

Prestwood village centre has an excellent range of day to day facilities available including a variety of local shops, ie Butchers, Bakers, Newsagents, Post Office, Chemist, Florist and Supermarkets, together with Doctors' and Dentists' surgeries. There are local schools for children up to the age of 11 years. For secondary education, Prestwood lies in the catchment area for the Amersham/Chesham Grammar Schools and The Royal Grammar School for Boys in High Wycombe. The Misbourne School in Great Missenden also offers schooling for 11-18 year olds. Private schools close by include The Gateway in Great Missenden and Pipers Corner for girls in Great Kingshill. Nearby Great Missenden also offers a main line rail link into Central London which is ideal for the commuter. For more extensive requirements both High Wycombe and Amersham are approximately 4/5 miles from Prestwood



All measurements of walls, doors, windows, fittings and appliances, including their size and location, are shown as standard sizes and therefore cannot be regarded as a representation by the seller.

