



WILLIAM THOMAS
ESTATE AGENTS

TEL: (01204) 590150 FAX: (01204) 590131
EMAIL: INFO@WILLIAMTHOMASESTATES.CO.UK

DRAFT

PLEASE CONFIRM THAT ALL THE DETAILS ARE CORRECT TO THE BEST OF YOUR KNOWLEDGE.

PRINT NAME _____

SIGNED _____

DATED _____

147 Darwen Road, Bromley Cross, Bolton, BL7 9BG

The Property A spacious garden fronted mid terraced property, the current owners have **tastefully** renovated over recent years, to create a fabulous property, simply unload all of your furniture and this house will be your home, you're sure to feel settled and comfy immediately! You can't help but be impressed with the care and updates that have been injected into this two bedroom, mid-terrace. It's simply stunning!

Step Inside

A real treat awaits you as you enter through the front door into the welcoming entrance hallway, the first room to discover is your open plan kitchen-diner, this is a real sociable space to enjoy with family and friends. The impressive kitchen sits to the back of the property and features high gloss grey wall and floor units with complimentary worktops and tiled splashbacks, including a built in Neff oven and hob with extractor above, plus an Integrated fridge freezer. There is also an anthracite grey contemporary style wall mounted radiator. The kitchen flows beautifully into the dining room, which in turn gives access to the cosy lounge, which sits to the front of your property.

Bedtime & Baths

To the first floor you'll discover two large double bedrooms and a stunning 3 piece bathroom. The sleek bathroom has a bath with shower above, vanity wash basins with a storage cupboards below. A black heated towel radiator and grey wall tiles create a fabulous finish. Bedroom one is a large double and sits to the front of the property, bedroom two has a window looking over the rear garden.

Step Outside

Leading out from the kitchen, a flagged Indian Stone patio greets you, leading to a block paved patio for you to sit out and fire up the BBQ on a summers evening, or take your magazine out on a Sunday morning and put your feet up with a brew.

Out And About

Situated on Darwen Road, Bromley Cross which is acknowledged as one of Bolton's most prestigious locations due to its being on the fringe of the West Pennine Moors and close to beautiful countryside. The village is increasingly popular with its own shops, cafes, restaurants and takeaways plus an array of hairdressers, beauty salons, doctors, dentists, and opticians....the list goes on. The train station takes you directly to Manchester city and we have some of the best schooling in Greater Manchester close by.

£195,000

www.williamthomasestates.co.uk

454 Darwen Road Bromley Cross Bolton



WILLIAM THOMAS
ESTATE AGENTS

TEL: (01204) 590150 FAX: (01204) 590131
EMAIL: INFO@WILLIAMTHOMASESTATES.CO.UK



- Stunning Two Bedroom Terraced House
- Modernised To a High Standard
- Lounge
- Fabulous Open Plan Kitchen-Diner
- Two Double Bedrooms
- Modern 3 Piece Bathroom
- Rear Courtyard
- Internal Inspection Highly Advised

147 Darwen Road, Bromley Cross, Bolton, BL7 9BG

The Property A spacious garden fronted mid terraced property, the current owners have tastefully renovated over recent years, to create a fabulous property, simply unload all of your furniture and this house will be your home, you're sure to feel settled and comfy immediately! You can't help but be impressed with the care and updates that have been injected into this two bedroom, mid-terrace. It's simply stunning!

Step Inside

A real treat awaits you as you enter through the front door into the welcoming entrance hallway, the first room to discover is your open plan kitchen-diner, this is a real sociable space to enjoy with family and friends. The impressive kitchen sits to the back of the property and features high gloss grey wall and floor units with complimentary worktops and tiled splashbacks, including a built in Neff oven and hob with extractor above, plus an Integrated fridge freezer. There is also an anthracite grey contemporary style wall mounted radiator. The kitchen flows beautifully into the dining room, which in turn gives access to the cosy lounge, which sits to the front of your property.

Bedtime & Baths

To the first floor you'll discover two large double bedrooms and a stunning 3 piece bathroom. The sleek bathroom has a bath with shower above, vanity wash basins with a storage cupboards below. A black heated towel radiator and grey wall tiles create a fabulous finish. Bedroom one is a large double and sits to the front of the property, bedroom two has a window looking over the rear garden.

Step Outside

Leading out from the kitchen, a flagged Indian Stone patio greets you, leading to a block paved patio for you to sit out and fire up the BBQ on a summers evening, or take your magazine out on a Sunday morning and put your feet up with a brew.

Out And About

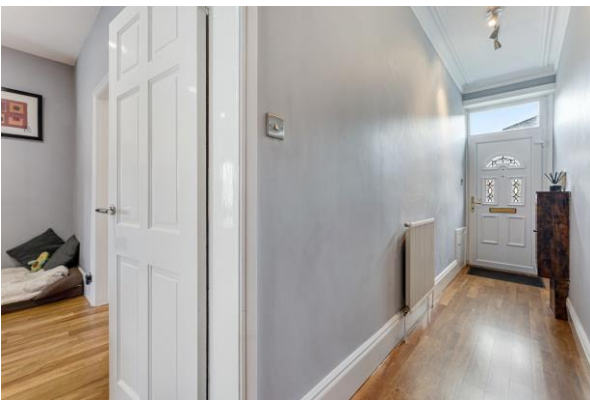
Situated on Darwen Road, Bromley Cross which is acknowledged as one of Bolton's most prestigious locations due to its being on the fringe of the West Pennine Moors and close to beautiful countryside. The village is increasingly popular with its own shops, cafes, restaurants and takeaways plus an array of hairdressers, beauty salons, doctors, dentists, and opticians....the list goes on. The train station takes you directly to Manchester city and we have some of the best schooling in Greater Manchester close by.

£195,000

www.williamthomasestates.co.uk

454 Darwen Road Bromley Cross Bolton

Entrance Hall



Lounge





Additional Pictures



Open Plan Kitchen-Diner



Kitchen



First Floor



Bedroom 1



Bedroom 2





3 Piece Bathroom



Outside



Agents Notes

William Thomas Estates for themselves and for vendors or lessors of this property whose agents they are given notice that: (i) the particulars are set out as a general outline only for the guidance of intended purchasers or lessees and do not constitute nor constitute part of an offer or a contract. (ii) all descriptions, dimensions, reference to condition and necessary permissions for use and occupation and other details are given without responsibility and any intending purchasers or tenants should not rely on them as statements or representations of fact but must satisfy themselves by inspection or otherwise as to the correctness of each of them (iii) no person in the employment of William Thomas Estates has authority to make or give any representations or warranty whatever in relation to this property