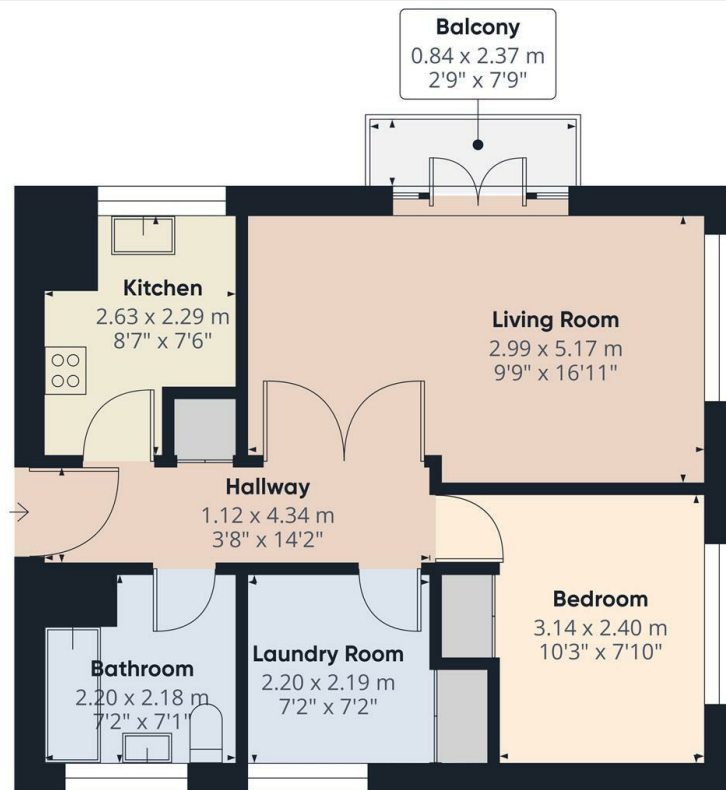


Moss Hall Grove, London, N12 8PG

£1,600 PCM

- 2 Bedroom ground floor apartment
- Fitted kitchen with appliances
- Council tax band C - £1,809.34 per annum
- Deposit: £1,845 (Equivalent to 5 weeks rent)
- Balcony off lounge
- 1 Double bedroom & 1 single bedroom (ideal for study)
- Unfurnished
- Laminate wooden floors throughout
- Available on 12 month tenancy
- Available NOW



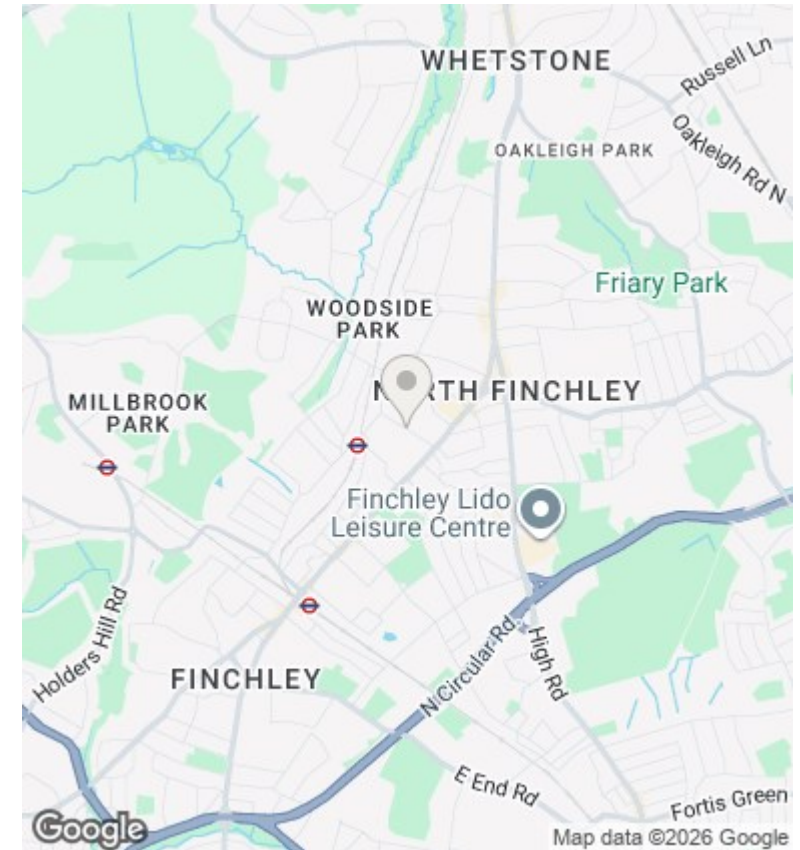
Approximate total area⁽¹⁾
45 m²
483 ft²

Balconies and terraces
2 m²
22 ft²

(1) Excluding balconies and terraces

Calculations reference the RICS IPMS 3C standard. Measurements are approximate and not to scale. This floor plan is intended for illustration only.

GIRAFFE360



Directions

7 Ballards Lane, Finchley, London, N3 1UX
02083499000

Viewings

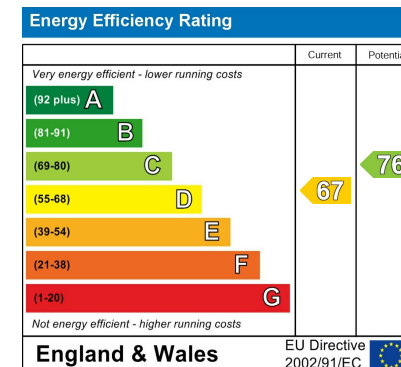
Viewings by arrangement only. Call 02083499000 to make an appointment.

Council Tax Band

C

EPC Rating:

D



Hello@simonclarke.co.uk
www.simonclarke.co.uk