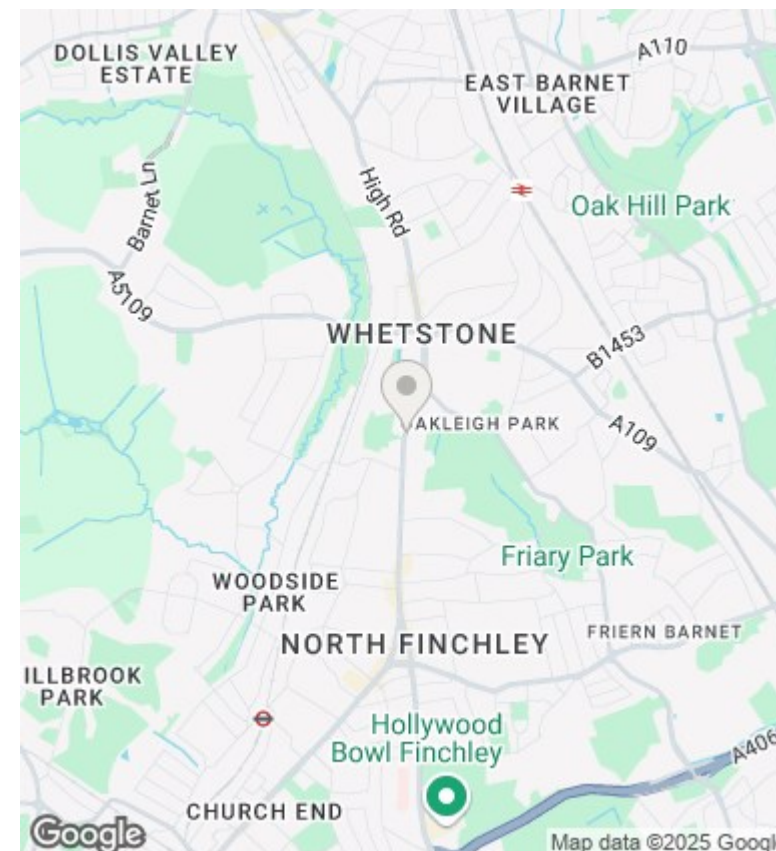
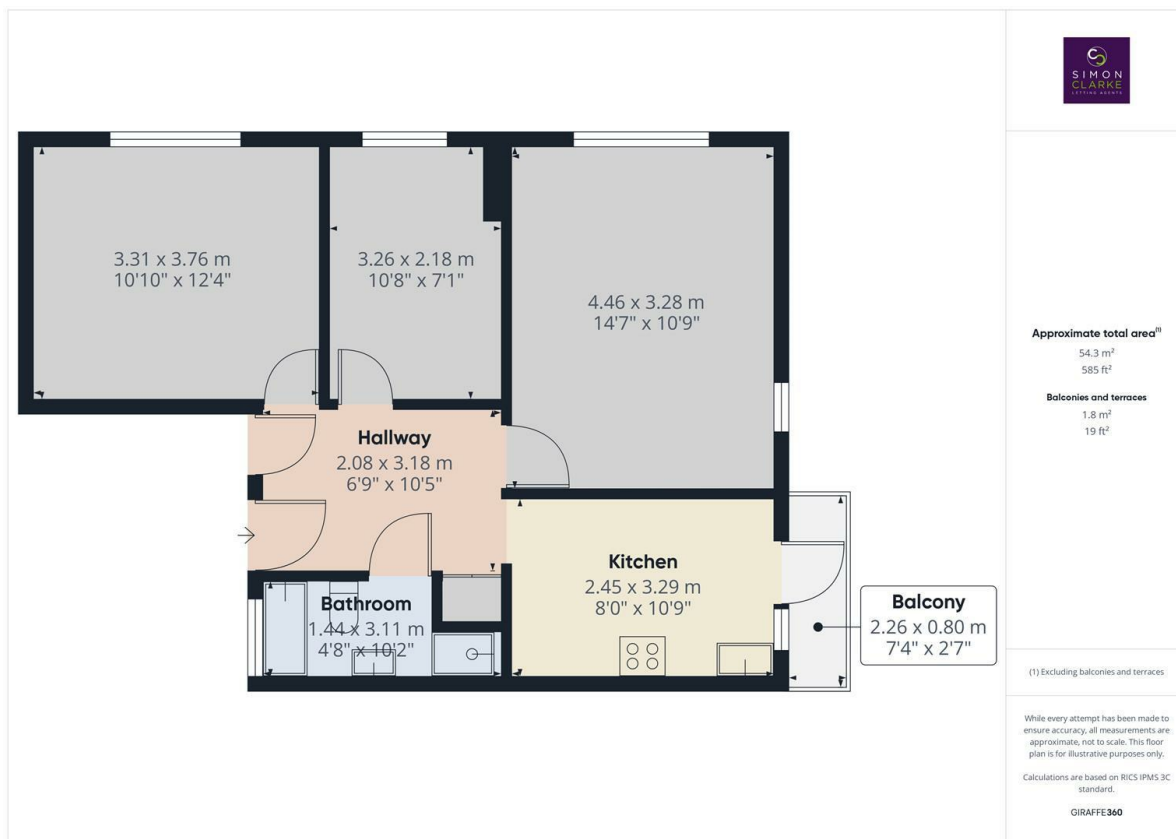




High Trees, London, N20 0PZ

£1,725 PCM

- 2 Bedroom 1st Floor Maisonette
- Wooden flooring throughout
- Modern fitted kitchen with dishwasher and small balcony
- Available NOW
- Excellent location for amenities and open spaces
- Attractive views over Swan Lane Open Space
- Council tax band C
- Spacious 4 piece bathroom suite
- Double glazed / gas central heating
- Unfurnished



Directions

Viewings

Viewings by arrangement only. Call 02083499000 to make an appointment.

Council Tax Band

C

EPC Rating:

D

Energy Efficiency Rating		
	Current	Potential
Very energy efficient - lower running costs		
(92 plus) A		
(81-91) B		79
(69-80) C		
(55-68) D	64	
(39-54) E		
(21-38) F		
(1-20) G		
Not energy efficient - higher running costs		
England & Wales	EU Directive 2002/91/EC	