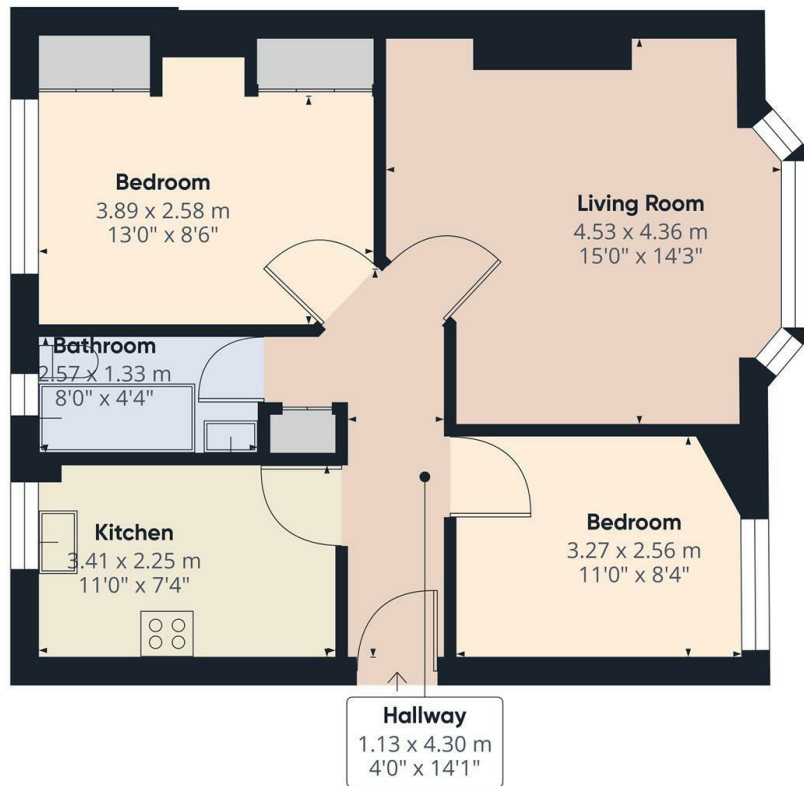


The Lindens, Friern Park, London, N12 9DL

£1,595 Per Month

- Spacious lounge with laminate wooden floors
- Fitted kitchen with appliances
- Available on long term tenancy (Initial 12 months)
- Available Now
- Two double bedroom apartment
- Tiled 3-piece bathroom suite
- Council tax band C - £1.727.32pa
- Off street parking available
- Fitted wardrobes to master bedroom
- Unfurnished

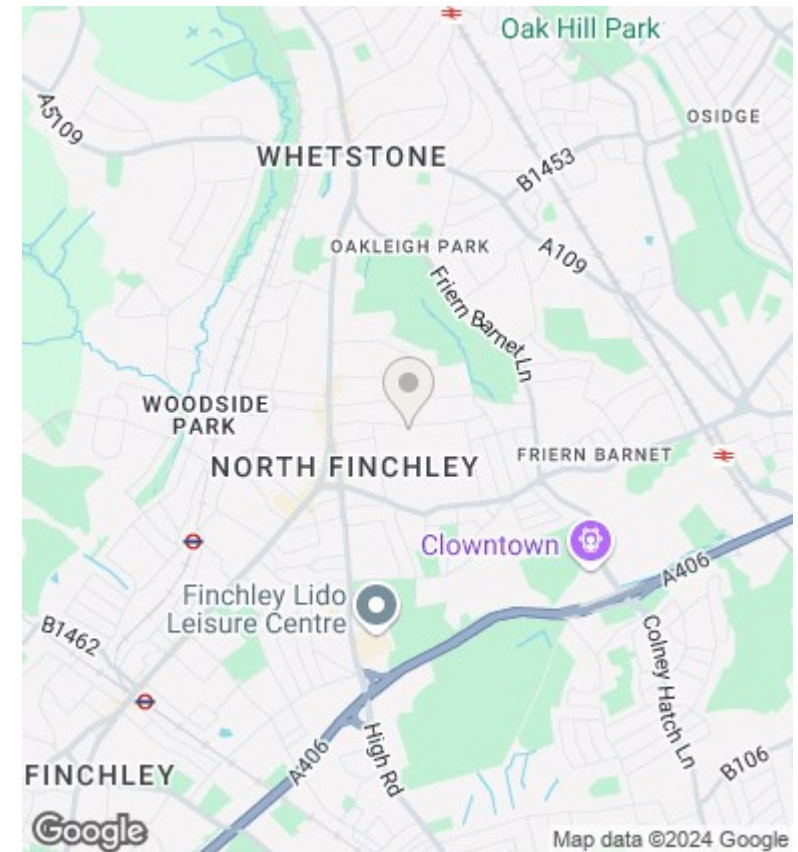


Approximate total area⁽¹⁾
54.22 m²
583.62 ft²

(1) Excluding balconies and terraces

While every attempt has been made to ensure accuracy, all measurements are approximate, not to scale. This floor plan is for illustrative purposes only.

GIRAFFE360



Directions

Viewings

Viewings by arrangement only. Call 02083499000 to make an appointment.

Council Tax Band

C

EPC Rating:

C

| Energy Efficiency Rating | | Current | Potential |
|---|--|-------------------------|-----------|
| Very energy efficient - lower running costs | | | |
| (92 plus) A | | | |
| (81-91) B | | | 79 |
| (69-80) C | | 69 | |
| (55-68) D | | | |
| (39-54) E | | | |
| (21-38) F | | | |
| (1-20) G | | | |
| Not energy efficient - higher running costs | | | |
| England & Wales | | EU Directive 2002/91/EC | |