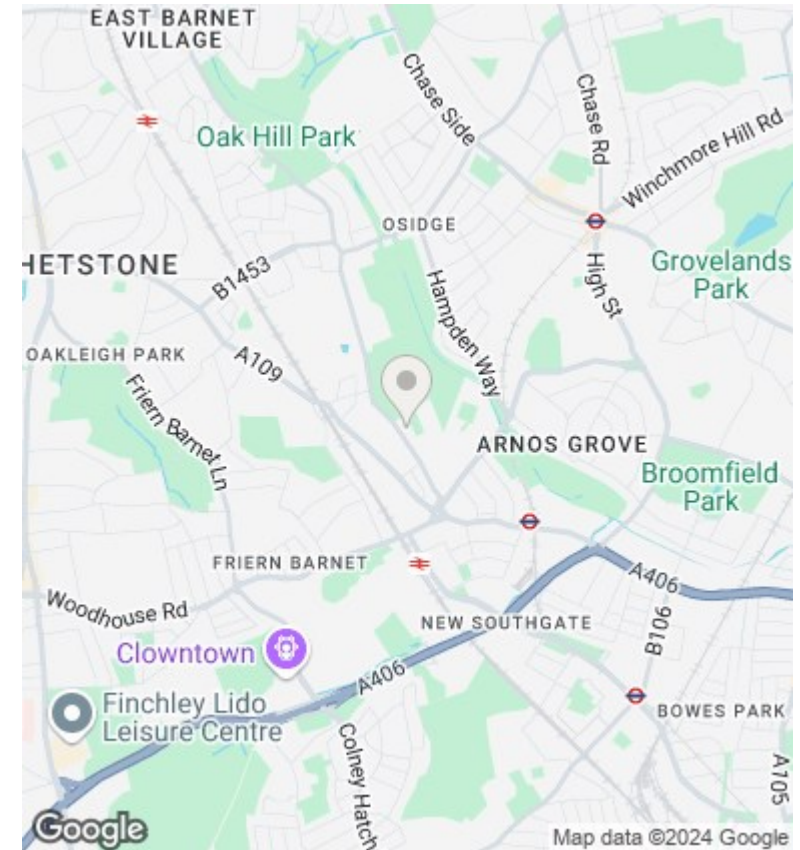
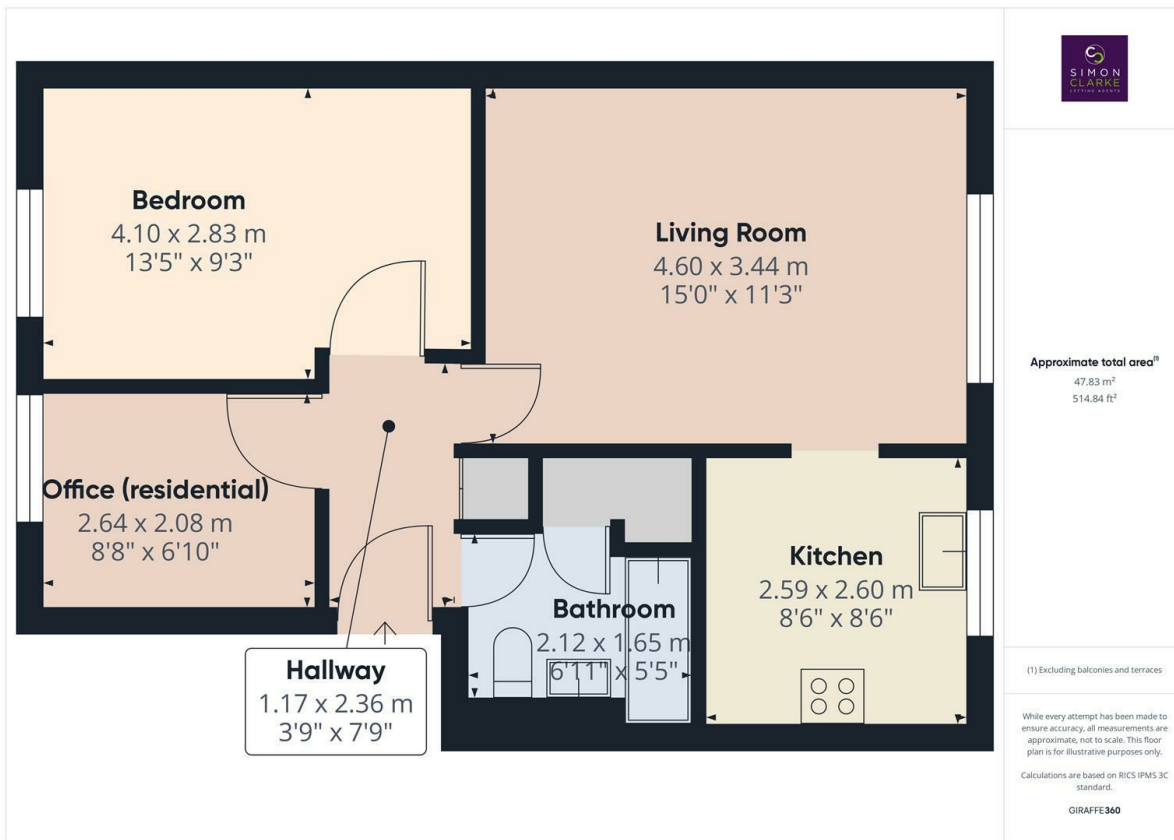




Darwin Close, London, N11 1TA

£1,600 PCM

- 2 Bedroom top floor flat 2nd floor)
- Ample storage space including access to loft
- Available on long term tenancy (initial 12 months)
- Available from 11th November 2024
- Stylish modern fitted kitchen
- 0.6 Miles to Arnos Grove
- Council Tax band C - £1,727.32 per annum
- Off street parking
- 0.5 Miles to New Southgate
- Unfurnished



Directions

Viewings

Viewings by arrangement only. Call 02083499000 to make an appointment.

Council Tax Band

C

EPC Rating:

C

