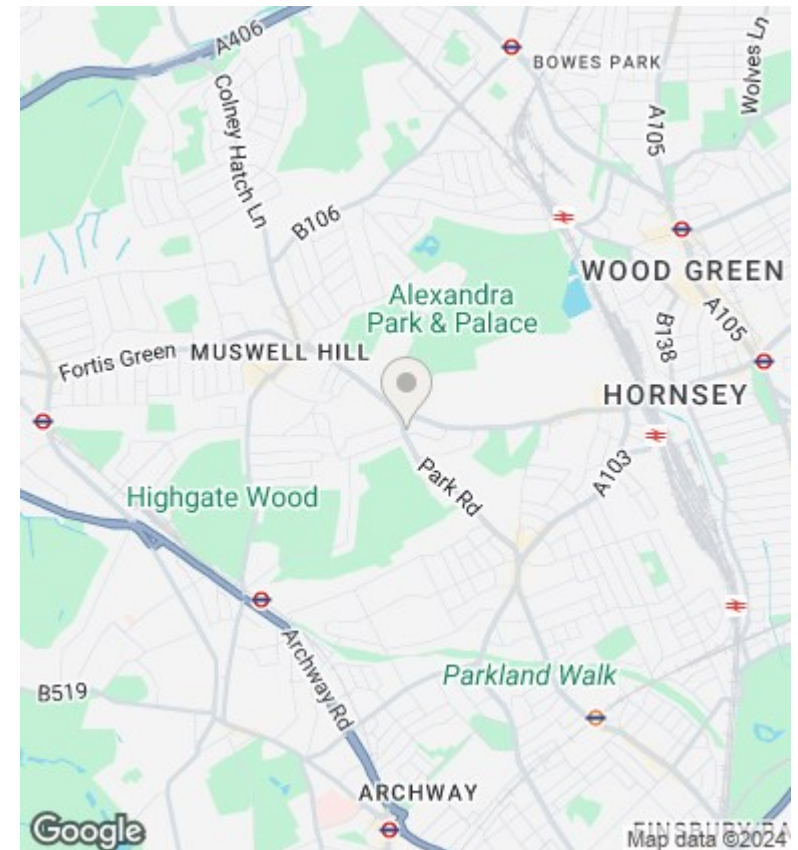
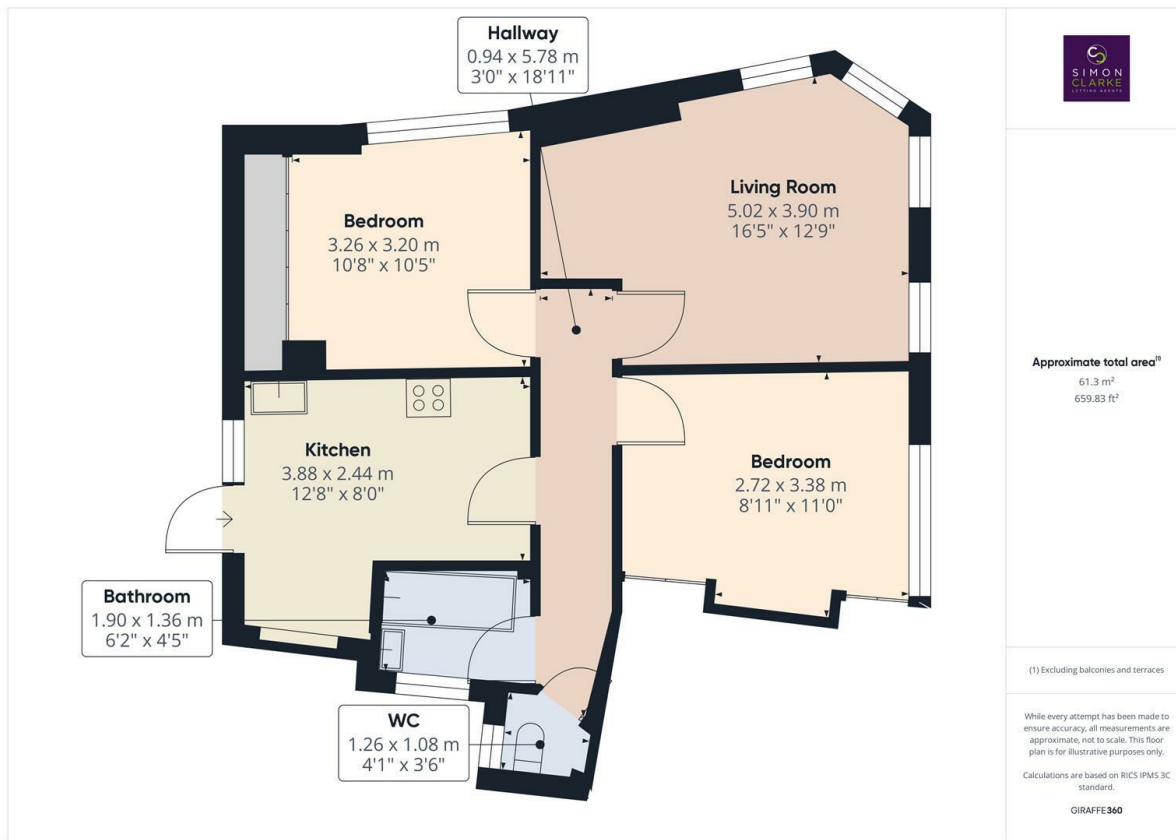


Park Road, London, N8 8LA

£1,850 PCM

- 2 Double bedroom flat
- Within a 5 minute walk to Priory Park
- Available on long term tenancy (initial 12 months)
- Available from 6th November 2024
- Large private balcony
- Modern fitted kitchen
- Council tax band C - £1,873.18pa
- Fitted wardrobes in both bedrooms
- Fitted bathroom & separate cloakroom
- Unfurnished



Directions

Viewings

Viewings by arrangement only. Call 02083499000 to make an appointment.

Council Tax Band

C

EPC Rating:

D

Energy Efficiency Rating		Current	Potential
Very energy efficient - lower running costs			
(92 plus) A			
(81-91) B			
(69-80) C			
(55-68) D		65	74
(39-54) E			
(21-38) F			
(1-20) G			
Not energy efficient - higher running costs			
England & Wales		EU Directive 2002/91/EC	