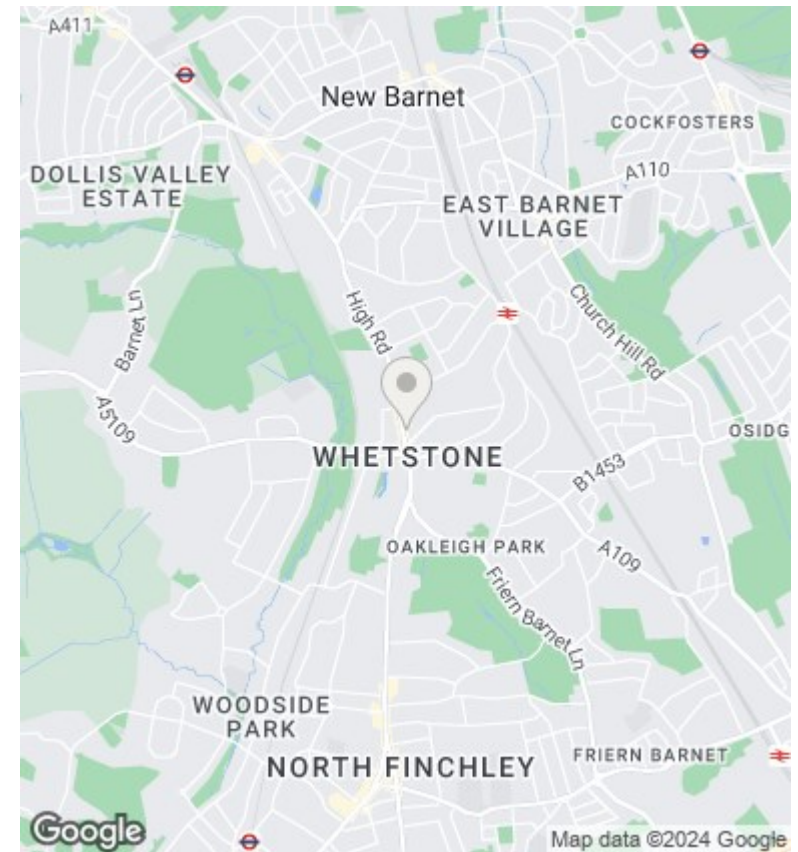
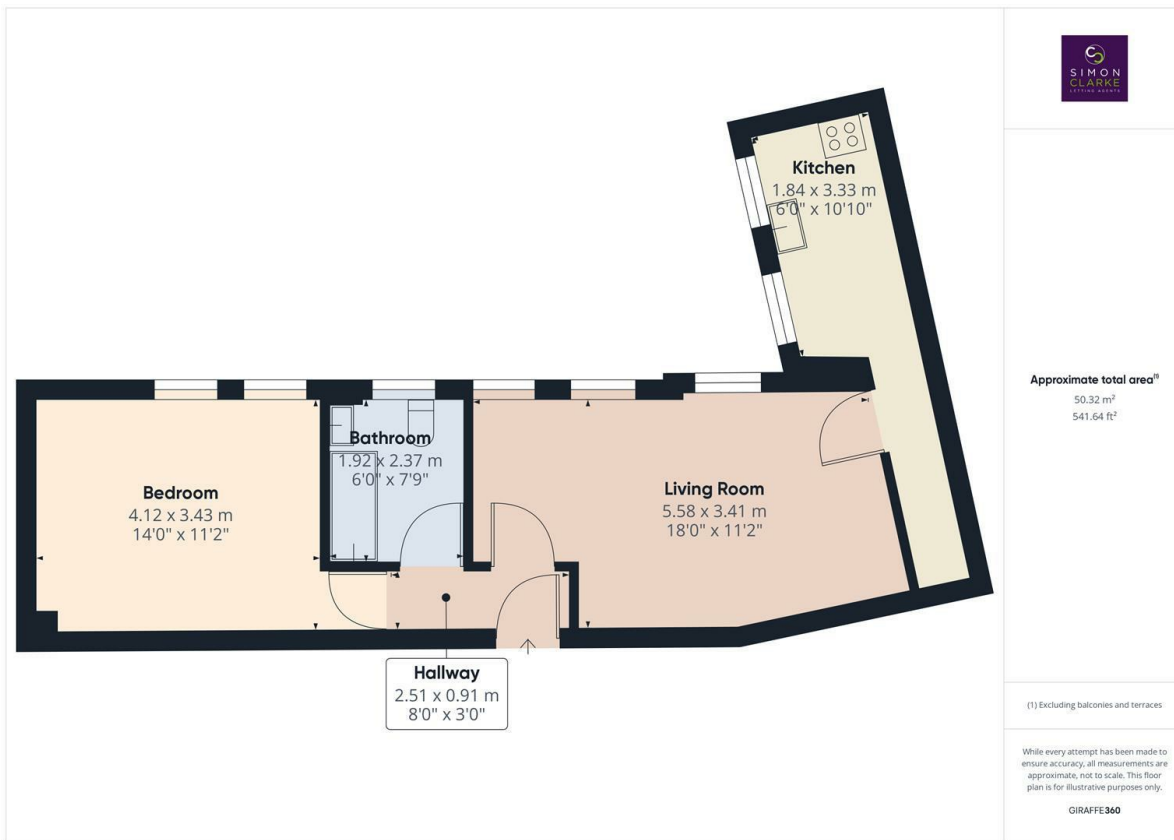




High Road, London, N20 9HJ

£1,430 Per Calendar Month

- Managed by Simon Clarke Letting Agents
- Gas central heating & double glazing
- Available on a long term tenancy (initial 12 month tenancy)
- Available from 14th September 2024
- Located in the heart of Whetstone N20
- Vast array of shops and supermarkets on doorstep
- Unfurnished
- Close proximity to Totteridge / Whetstone Tube Station & Oakleigh Park BR Station
- Large double bedroom with fitted wardrobes
- Council tax band C - £1,727.32pa



## Directions

## Viewings

Viewings by arrangement only. Call 02083499000 to make an appointment.

## Council Tax Band

C

## EPC Rating:

D

Energy Efficiency Rating		
	Current	Potential
<i>Very energy efficient - lower running costs</i>		
(92 plus) <b>A</b>		
(81-91) <b>B</b>		
(69-80) <b>C</b>		
(55-68) <b>D</b>	66	68
(39-54) <b>E</b>		
(21-38) <b>F</b>		
(1-20) <b>G</b>		
<i>Not energy efficient - higher running costs</i>		
<b>England &amp; Wales</b>	EU Directive 2002/91/EC	