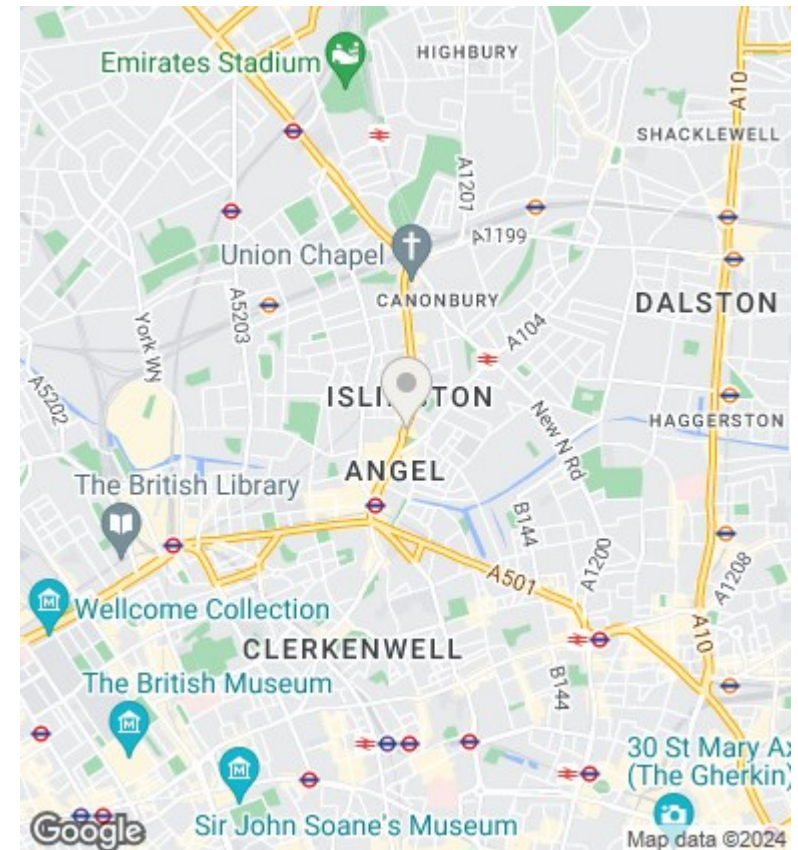
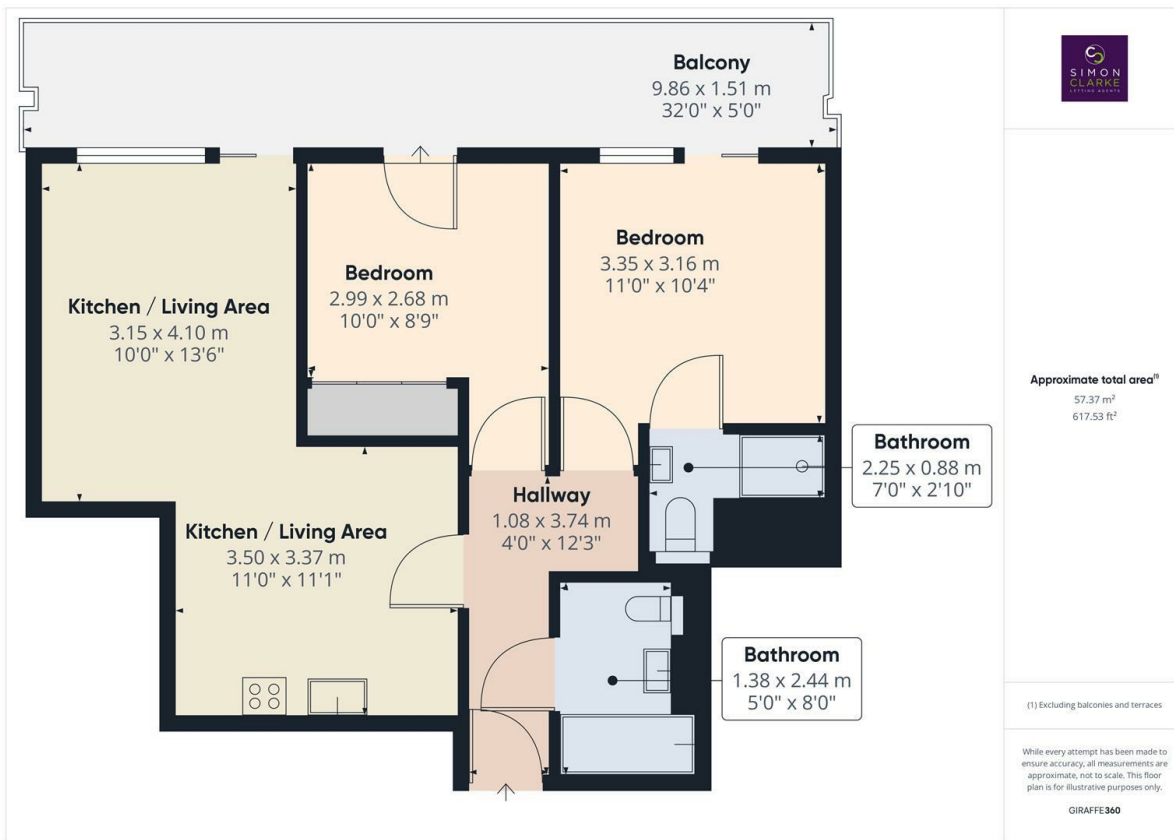




1 Providence Place, London, N1 0NT

£3,150 PCM

- 2 Double bedroom 2 bathroom apartment Managed by Simon Clarke Letting Agents
- Less than 5 minute walk to Angel tube station
- Available on long term tenancy (Initial 12 months)
- Available 20th September 2024
- modern white gloss kitchen with black granite work tops & integrated appliances
- Large 32' balcony- full width of the apartment
- Council tax band F
- Full electric under floor heating (individual room controls)
- Moments from Shops, restaurants, cinema and a vast array of amenities
- Furnished



Directions

Viewings

Viewings by arrangement only. Call 02083499000 to make an appointment.

Council Tax Band

F

EPC Rating:

C

Energy Efficiency Rating		Current	Potential
<i>Very energy efficient - lower running costs</i>			
(92 plus)	A		
(81-91)	B	80	81
(69-80)	C		
(55-68)	D		
(39-54)	E		
(21-38)	F		
(1-20)	G		
<i>Not energy efficient - higher running costs</i>			
England & Wales		EU Directive 2002/91/EC	