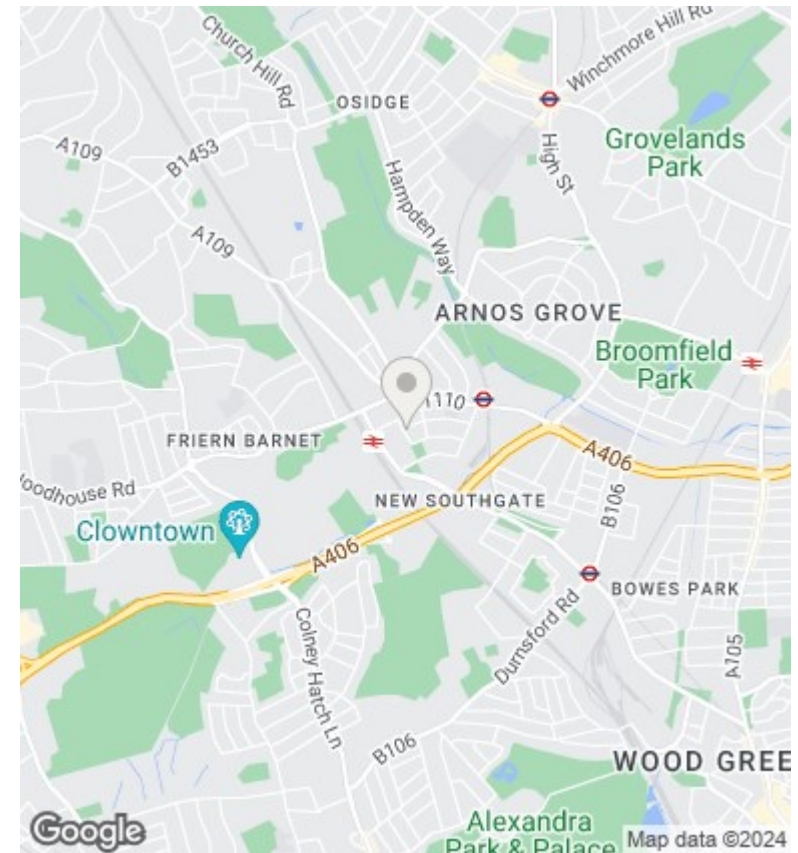
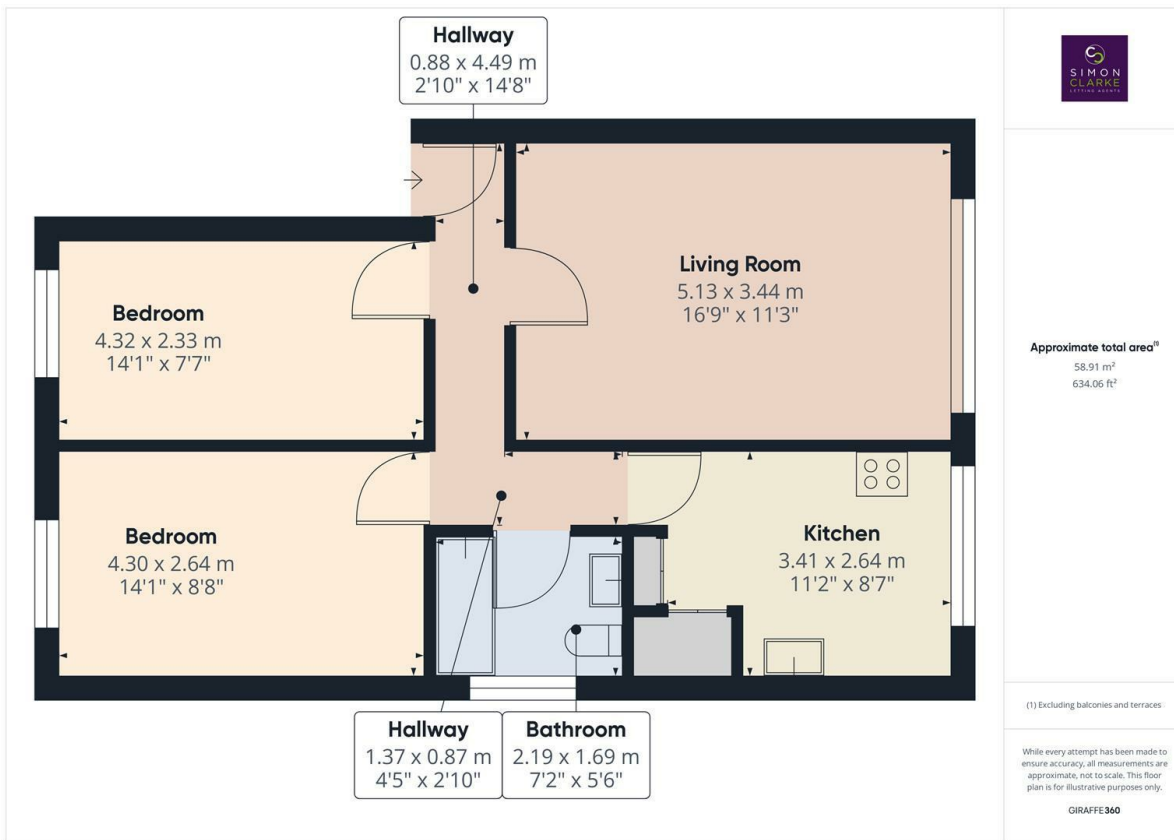




## 140, Limes Court High Road, New Southgate, London, N11 1PG

£1,600 PCM

- Managed by Simon Clarke Letting Agents
- Close proximity to New Southgate BR station & Arnos Grove tube station
- Available for long term tenancy (initial 12 months)
- Council tax band C
- 2 Double bedroom flat
- Gas central heating / Double glazed
- Unfurnished
- Fitted kitchen with appliances
- Laminate wooden floors
- Available from 16th July 2024



### Directions

### Viewings

Viewings by arrangement only. Call 02083499000 to make an appointment.

### Council Tax Band

C

### EPC Rating:

C

