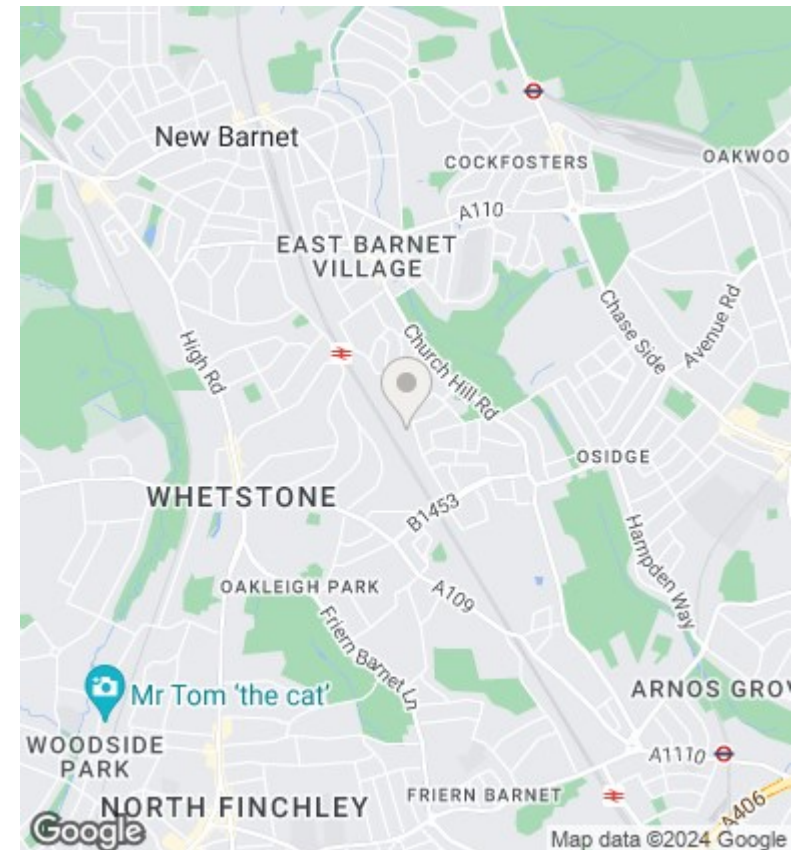
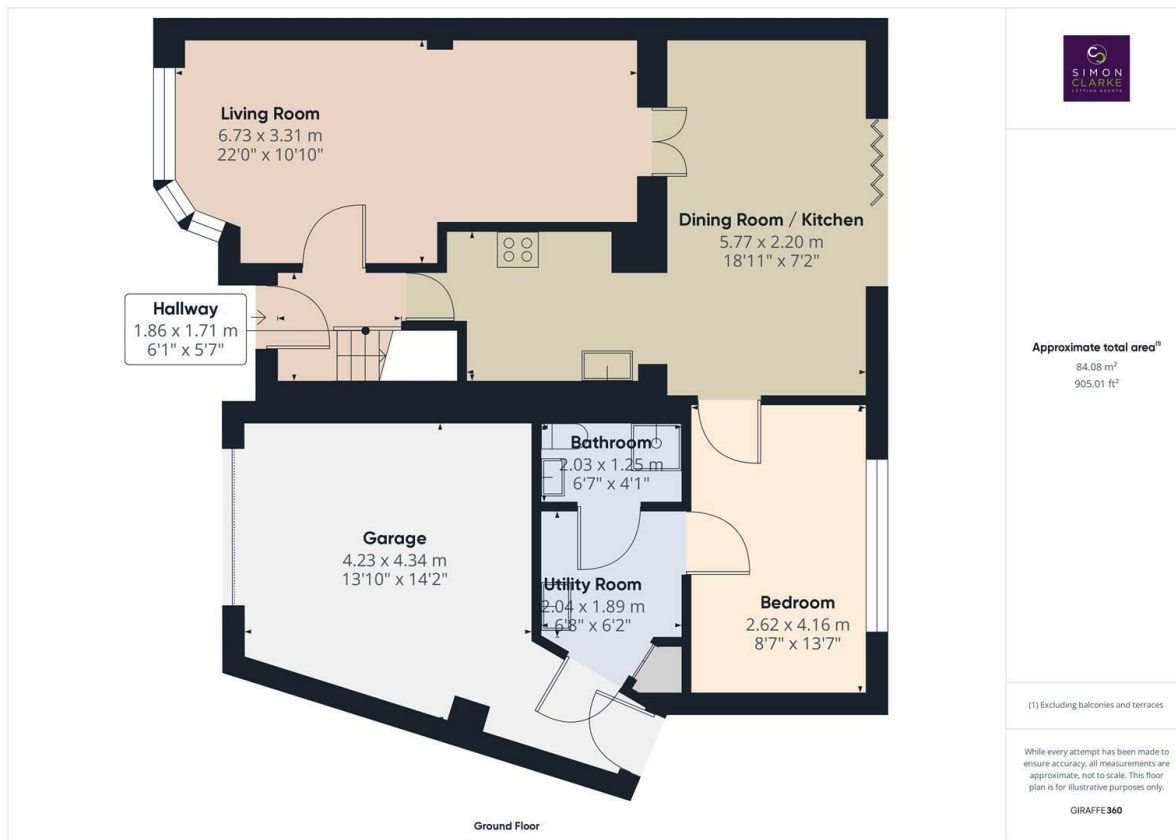




114 Alverstone Avenue, East Barnet, Barnet, EN4 8EE

£2,850 PCM

- 3 Bedroom semi-detached family home
- Garage & Driveway for 3 cars
- Available on long term tenancy (initial 12 months)
- Available from 19th August 2024
- Managed by Simon Clarke Letting Agents
- Easy access to Oakleigh Park BR Station
- Council Tax band E - £2,375.07pa
- Stunning bathroom & shower room
- Located within catchments of local schooling
- Unfurnished / *NOTE This rent includes garden maintenance



Directions

Viewings

Viewings by arrangement only. Call 02083499000 to make an appointment.

Council Tax Band

E

EPC Rating:

D

