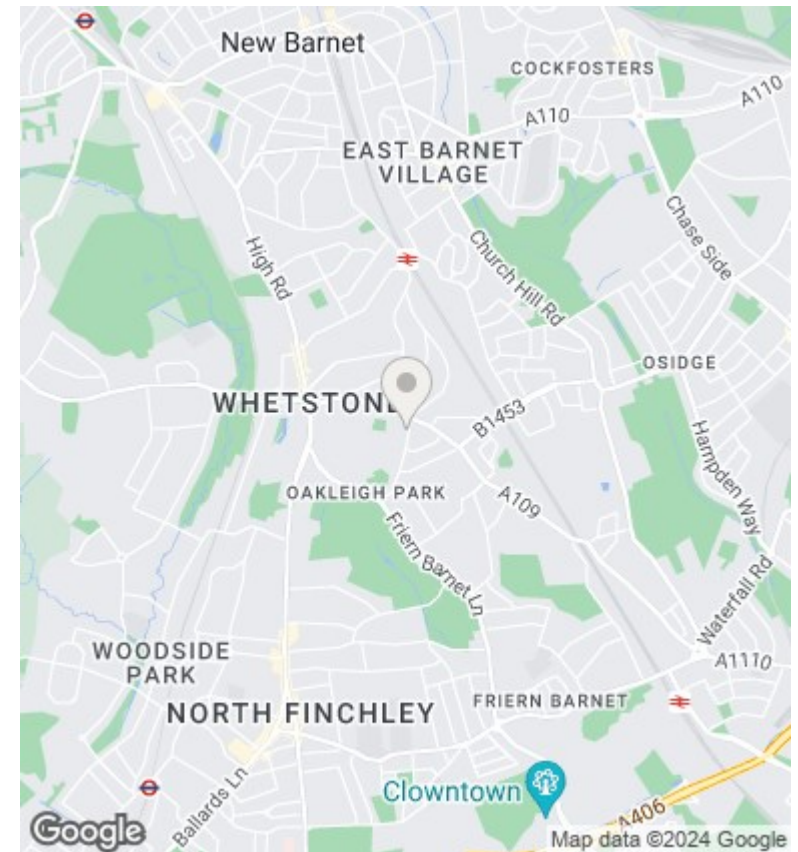
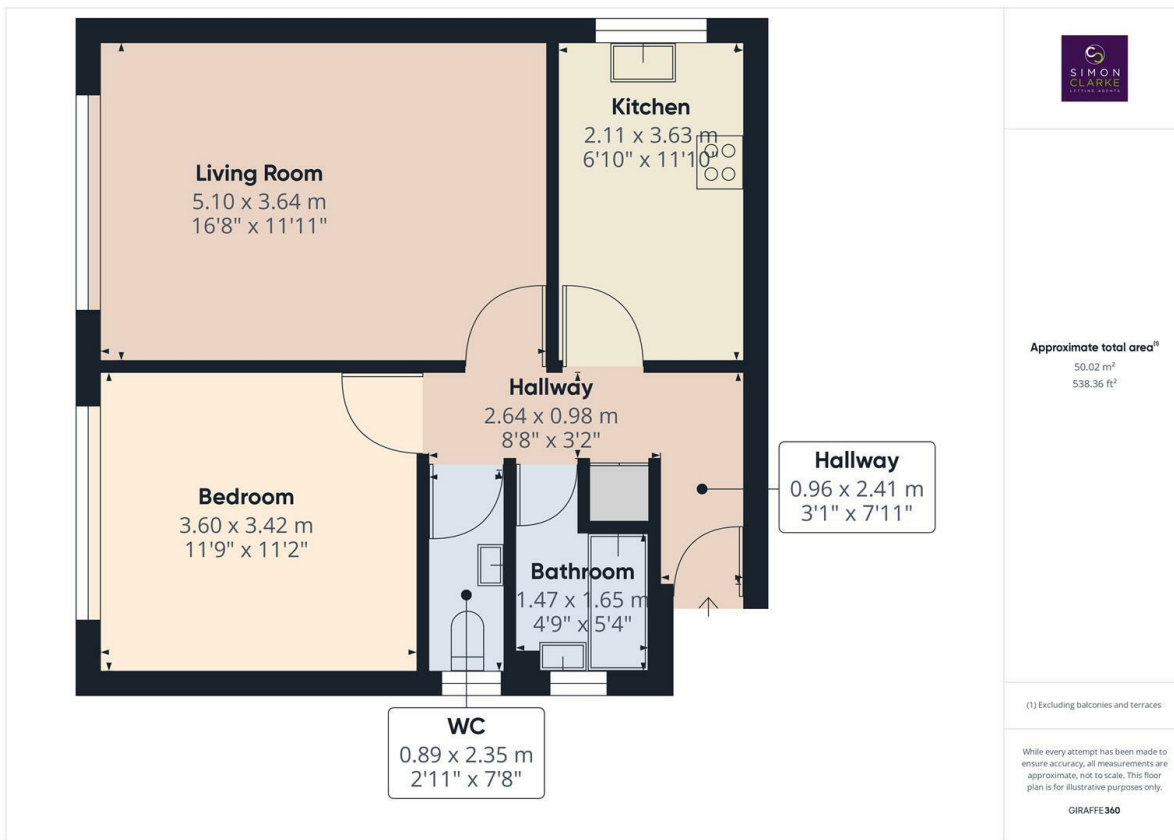




15 Cameron Close, Myddelton Park, Whetstone, London, N20 0HU

£1,395 PCM

- Large 1 Bedroom top floor (2nd) apartment apartment
- Close to Oakleigh Park BR Station and Totteridge & Whetstone tube station
- Available on long term tenancy (initial 12 months)
- Available from 1st July 2024
- Property to be redecorated throughout prior to new tenancy
- Modern fitted kitchen
- Council tax band C - £1, 727.32pa
- Off street parking available
- Fitted carpets throughout
- Furnished



Directions

Viewings

Viewings by arrangement only. Call 02083499000 to make an appointment.

Council Tax Band

C

EPC Rating:

C

Energy Efficiency Rating		
	Current	Potential
<i>Very energy efficient - lower running costs</i>		
(92 plus) A		
(81-91) B		
(69-80) C	76	76
(55-68) D		
(39-54) E		
(21-38) F		
(1-20) G		
<i>Not energy efficient - higher running costs</i>		
England & Wales	EU Directive 2002/91/EC	