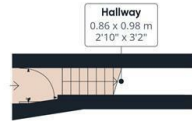




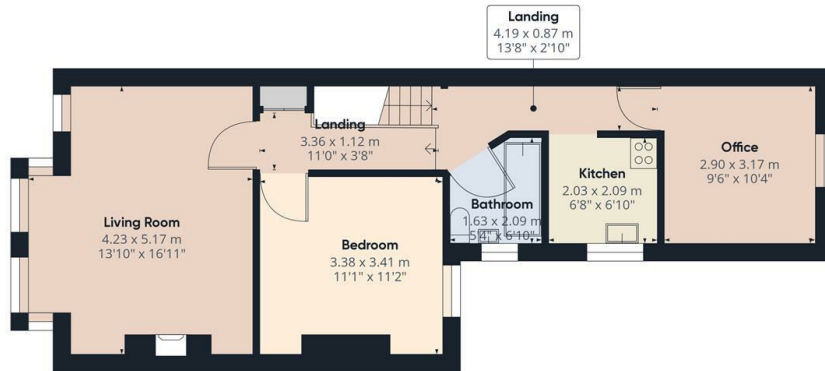
First Floor 24 Willingdon Road, Wood Green, London, N22 6SB

£1,700 PCM

- Managed by Simon Clarke Letting Agents
- Bathroom with electric shower
- Available on long term tenancy (initial 12 months)
- Available from 27th July 2024
- 2 Double bedroom conversion
- Close to Turnpike Lane tube station
- Council tax band C - £1,727.32pa
- Fitted kitchen with appliances
- Laminate wooden floors in the lounge and fitted carpets elsewhere
- Unfurnished



Ground Floor



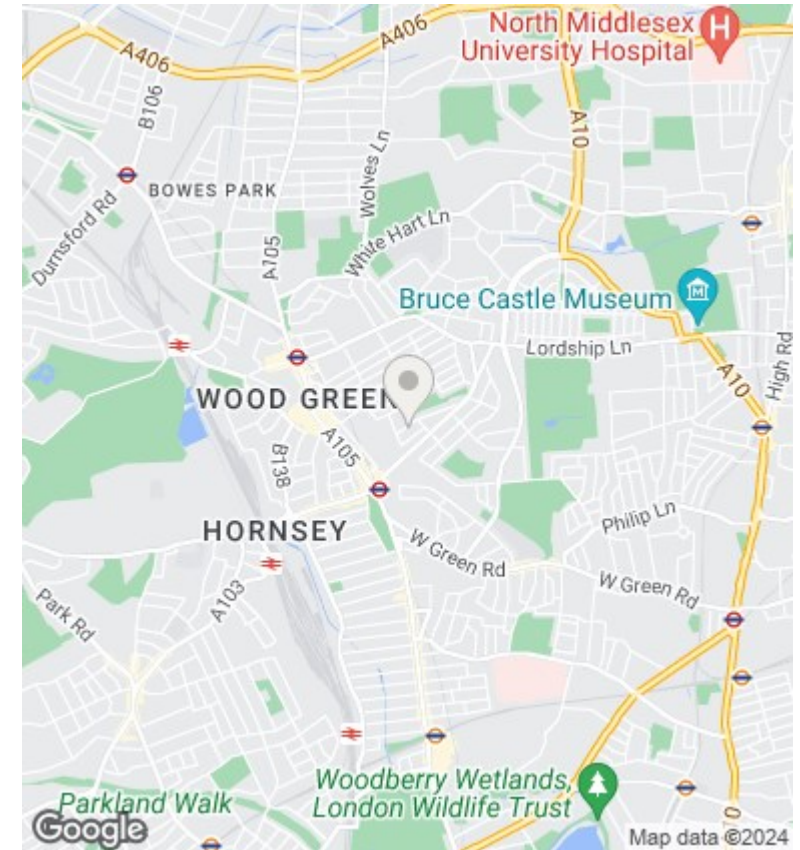
Floor 1

Approximate total area*
58.6 m²
630.72 ft²

(*) Excluding balconies and terraces

While every attempt has been made to ensure accuracy, all measurements are approximate, not to scale. This floor plan is for illustrative purposes only.

GIRAFFE360



Directions

Viewings

Viewings by arrangement only. Call 02083499000 to make an appointment.

Council Tax Band

C

EPC Rating:

E

Energy Efficiency Rating		Current	Potential
Very energy efficient - lower running costs			
(92 plus)	A		
(81-91)	B		
(69-80)	C		74
(55-68)	D	51	
(39-54)	E		
(21-38)	F		
(1-20)	G		
Not energy efficient - higher running costs			
England & Wales		EU Directive 2002/91/EC	