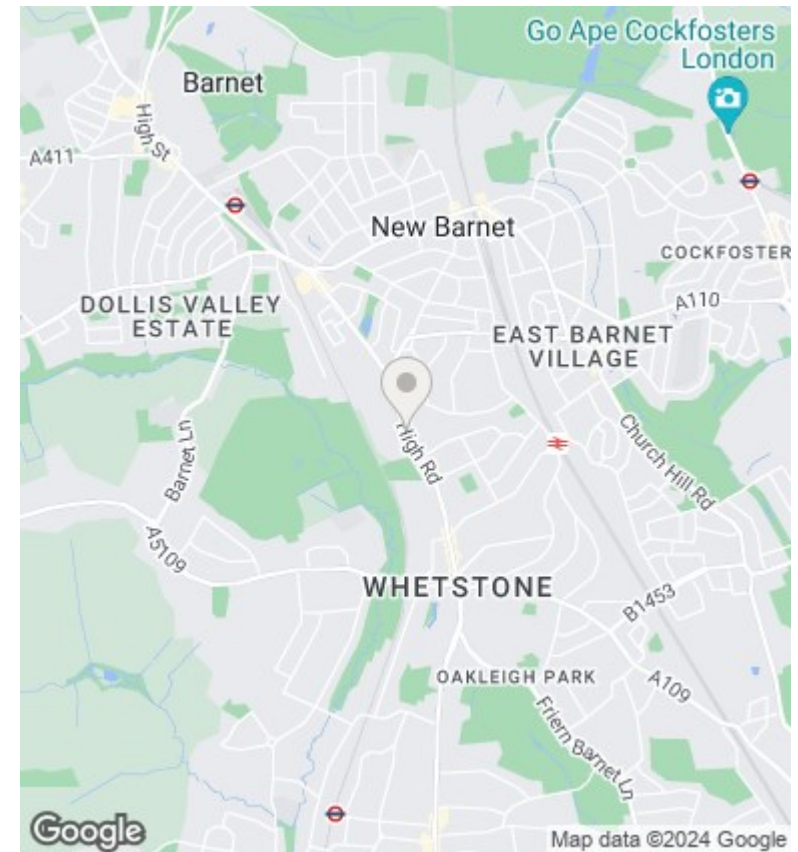
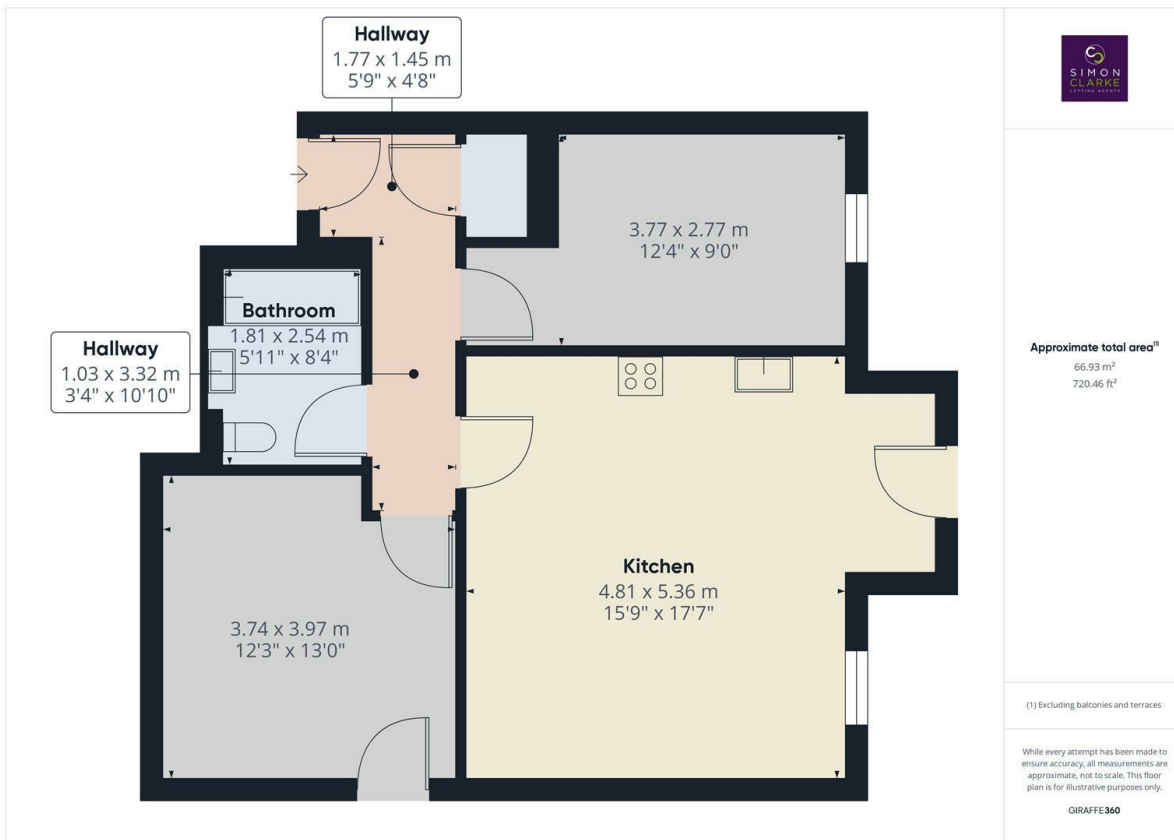




## Flat 8, 1511 High Road, Whetstone, London, N20 9PJ

£1,875

- Managed by Simon Clarke letting agents
- Luxury fitted kitchen with Bosch appliances
- Available on long term tenancy (initial 12 months)
- Available NOW
- BRAND NEW TO THE MARKET
- Off street parking and bicycle storage available
- Unfurnished
- Top floor 2 bedroom apartment
- Underfloor heating in all rooms
- Council tax to be confirmed due to new build



## Directions

## Viewings

Viewings by arrangement only. Call 02083499000 to make an appointment.

## Council Tax Band

New Build

## EPC Rating:

Energy Efficiency Rating		
	Current	Potential
<i>Very energy efficient - lower running costs</i>		
(92 plus) <b>A</b>		
(81-91) <b>B</b>		
(69-80) <b>C</b>		
(55-68) <b>D</b>		
(39-54) <b>E</b>		
(21-38) <b>F</b>		
(1-20) <b>G</b>		
<i>Not energy efficient - higher running costs</i>		
<b>England &amp; Wales</b>	EU Directive 2002/91/EC	