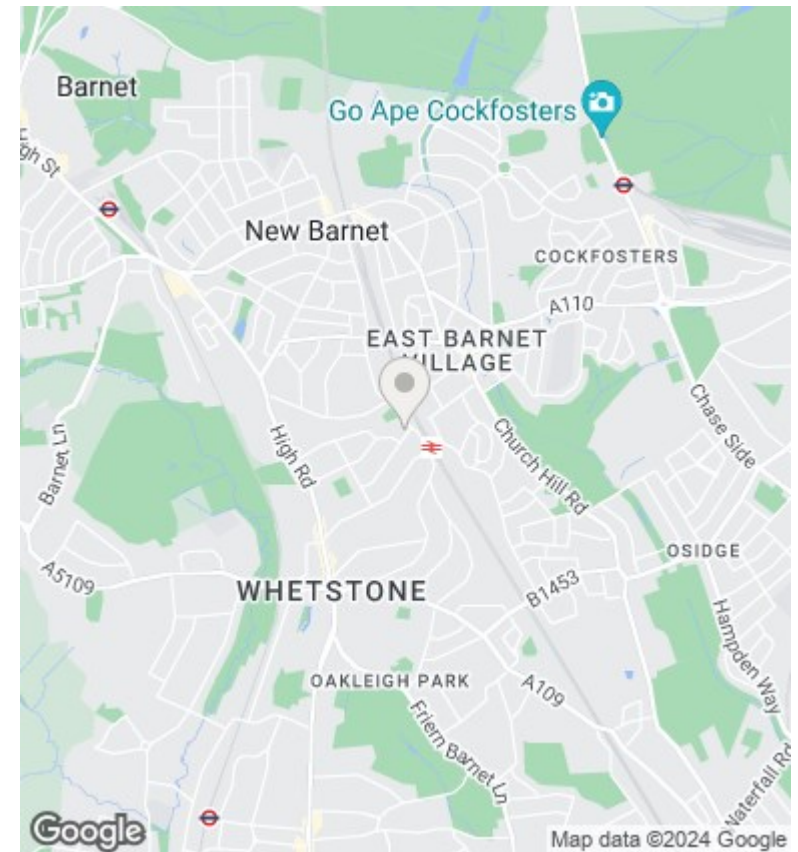
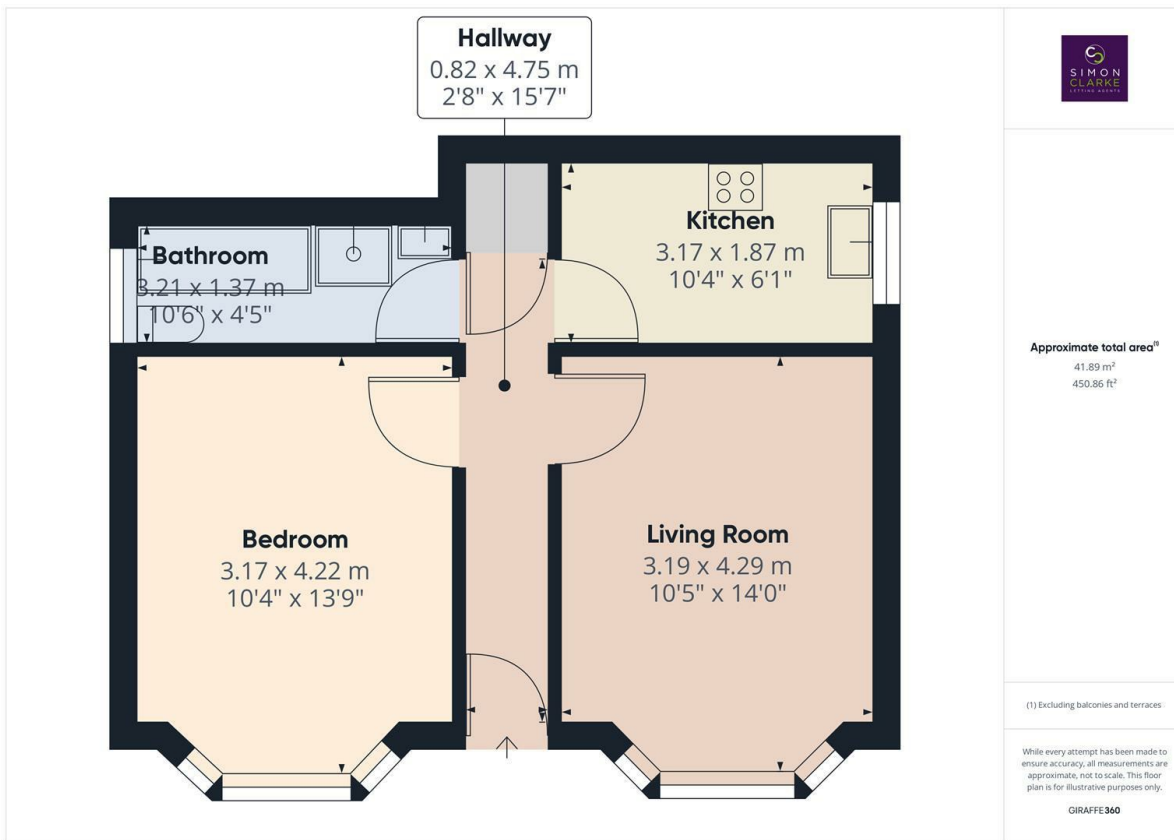




57 Temple Avenue, Whetstone, London, N20 9EL

£1,295 PCM

- MANAGED BY SIMON CLARKE LETTING AGENTS
- Double glazed & central heated
- Available on short term tenancy (6 to 12 months)
- Available from 5th June 2024
- Own front entrance
- Semi tiled 4 piece bathroom suite
- Council Tax band C - £1,727.32 per annum
- Laminate flooring throughout
- Moments from Oakleigh Park BR Station
- Unfurnished



Directions

Viewings

Viewings by arrangement only. Call 02083499000 to make an appointment.

Council Tax Band

C

EPC Rating:

D

Energy Efficiency Rating		Current	Potential
Very energy efficient - lower running costs			
(92 plus)	A		
(81-91)	B		77
(69-80)	C	68	
(55-68)	D		
(39-54)	E		
(21-38)	F		
(1-20)	G		
Not energy efficient - higher running costs			
England & Wales		EU Directive 2002/91/EC	