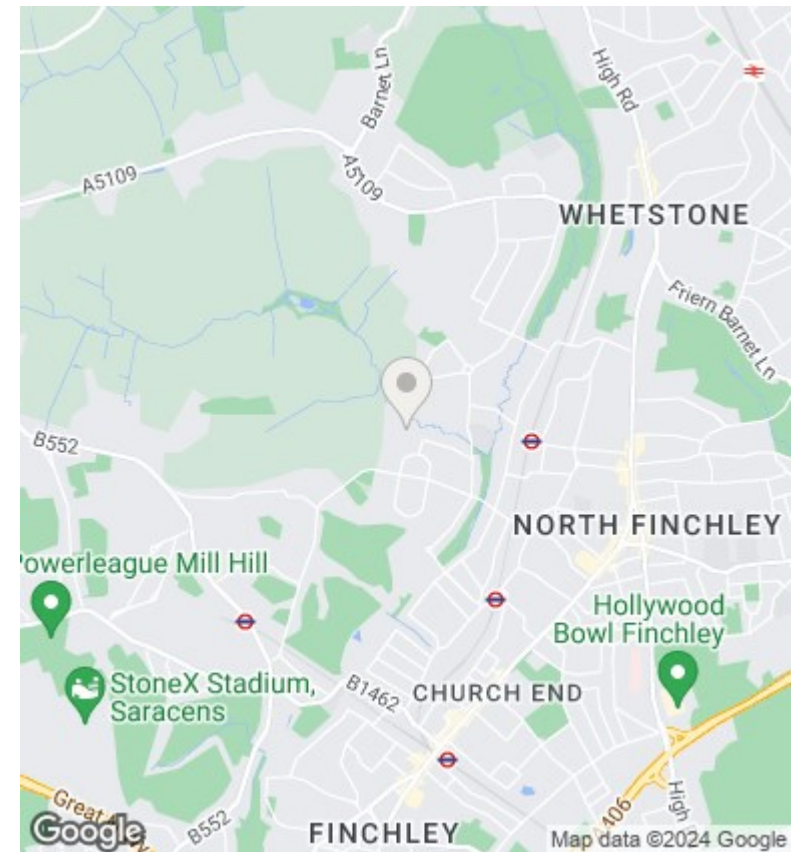
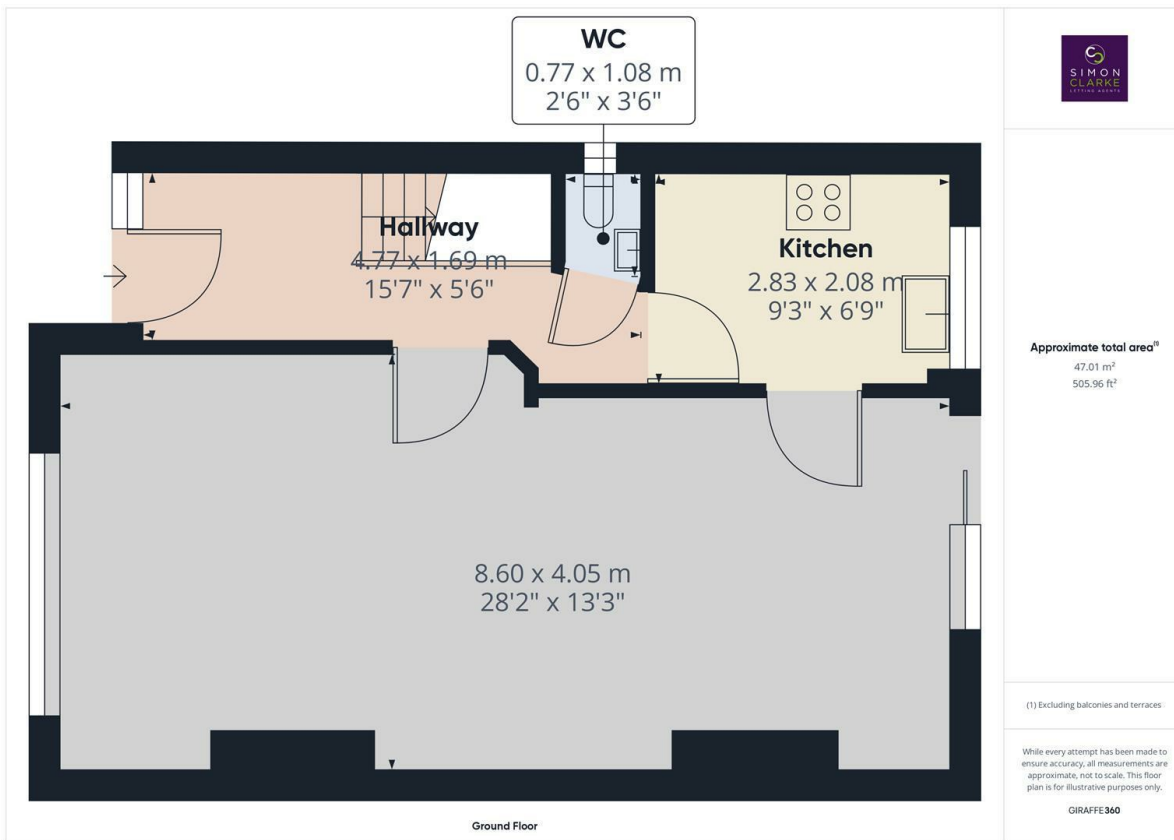




## 121 Chanctonbury Way, Woodside Park, London, N12 7AE

£2,600 PCM

- 3 Bedroom semi detached house
- Large private rear garden
- Available for long term tenancy (initial 12 months)
- Available NOW
- Huge 28ft through lounge
- Modern fitted kitchen with appliances including dishwasher
- Council tax band F
- Own Driveway and garage
- 4 Piece bathroom suite with additional WC downstairs
- Unfurnished



## Directions

## Viewings

Viewings by arrangement only. Call 02083499000 to make an appointment.

## Council Tax Band

F

## EPC Rating:

E

