



26 Bromley Gardens
Bromley, BR2 0ET
£650,000 Freehold EPC: D

 **Maguire Baylis**



A charming three bedroom Victorian semi detached house located within a highly popular and convenient residential road surrounded by similar period homes and providing access to both Shortlands and Bromley South stations.

This lovely home, which has been extended to ground floor at the rear, provides much character and also further potential to extend an improve, if required. Internally, the accommodation comprises an entrance hallway, two spacious reception areas open plan; good sized fitted kitchen with French doors to the rear garden. The bathroom is also to the ground floor.

Upstairs, there are the three bedrooms - all of a good size. Outside, the rear garden, which extends to around 50', provides a sunny south westerly aspect and features a large shed/summer house to the rear.

The property is located close to the popular Queensmead Park, plus the incredibly popular Shortlands Tavern, there is also a great choice of local schools including Highfield (0.4m), St Marks (0.3m) and Valley (0.4m) plus the Harris Academy Primary school, just 0.2m away. Bromley town centre can also be accessed easily by foot, a pleasant 10 minutes walk away.



- VICTORIAN SEMI-DETACHED HOUSE
- THREE GOOD SIZE BEDROOMS
- SPACIOUS OPEN PLAN LIVING ROOM
- FITTED KITCHEN WITH RANGEMASTER COOKER
- GROUND FLOOR BATHROOM WITH SHOWER OVER BATH
- 50' SOUTH FACING GARDEN WITH LARGE SHED/SUMMER HOUSE
- HIGH POPULAR & CONVENIENT ROAD
- SHORT WALK TO BROMLEY SOUTH & SHORTLANDS STATION
- CLOSE TO PARKS, WELL REGARDED SCHOOLS & HIGH STREET SHOPS
- EPC - BAND

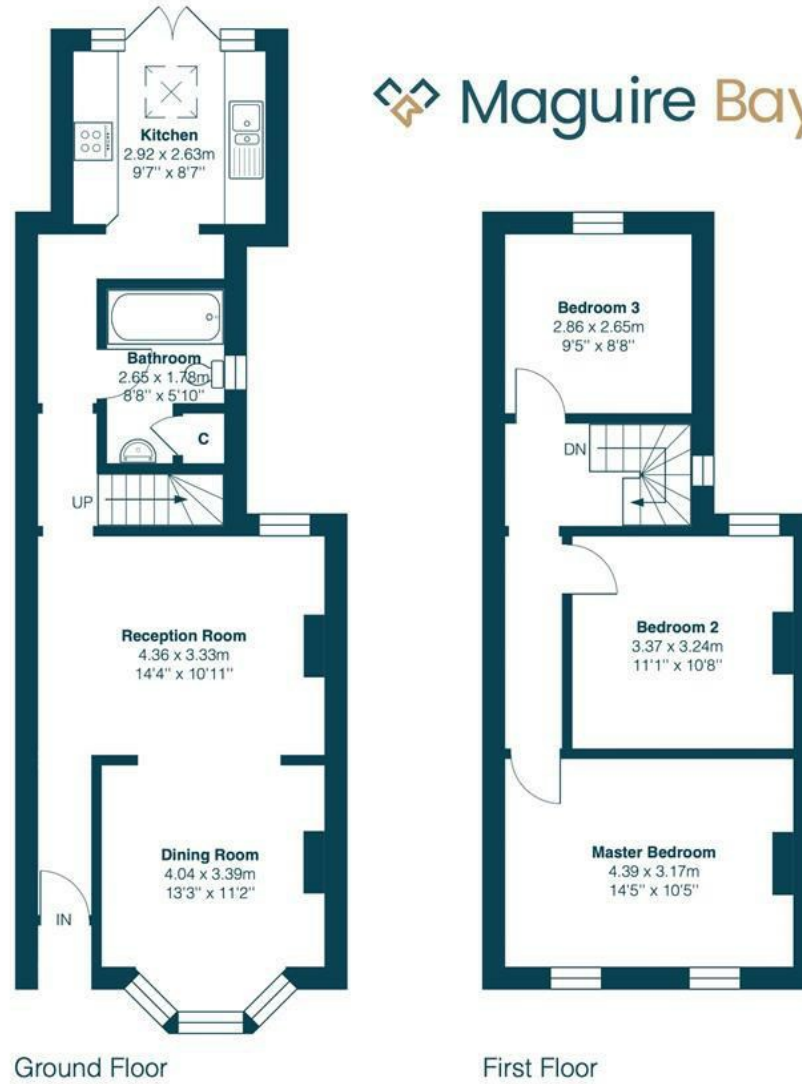


Bromley Gardens BR2



Total Area: 92.6 m²... 997 ft²

Maguire Baylis



This plan is for layout guidance only and not drawn to scale unless stated. Window and door openings are approximate. Whilst every care is taken in the preparation of this plan, we would advise interested parties to check all dimensions, shapes and compass bearings prior to making any decisions reliant upon them.

ENTRANCE PORCH

Original recessed front entrance porch; porch light.

HALLWAY

Part glazed front door; dado rails; varnished floor boards; original coved ceiling.

LIVING ROOM

14'2 x 10'10 (4.32m x 3.30m)

Double glazed window to rear; varnished floor boards; fitted shelving within recesses; open plan to:

DINING ROOM

13' (into bay) x 11' (3.96m (into bay) x 3.35m)

Double glazed bay window to front; fitted shelving within recesses; feature cast iron fireplace; varnished floor boards.

REAR LOBBY

Stairs to first floor; varnished floor boards.

KITCHEN

11'7 x 9'5 (3.53m x 2.87m)

French doors to rear; Velux skylight roof window; fitted with a good range of wood effect wall and base units with worktops to two walls; inset stainless steel sink unit; stainless steel Rangemaster electric cooker, with induction hob, to remain; extractor hood; varnished floor boards; part tiled.

GROUND FLOOR BATHROOM

Double glazed window to side; suite comprising bath with mixer tap/shower attachment and fitted glass shower screen; fitted wash basin with vanity storage under; WC; heated towel rail; fully tiled walls; built-in understairs storage.

FIRST FLOOR LANDING

Double glazed window to side; access to loft.

BEDROOM 1

14'4 x 10'5 (4.37m x 3.18m)

Two double glazed windows to front; two radiators; wood effect flooring.

BEDROOM 2

11' x 10'7 (3.35m x 3.23m)

Double glazed window to rear; wood effect flooring; radiator.

BEDROOM 3

9'4 x 8'8 (2.84m x 2.64m)

Double glazed window to rear; radiator; wood effect flooring.

GARDEN

approx 50' (approx 15.24m)

An attractive private rear garden providing a sunny southerly aspect; low maintenance with a central area of artificial lawn; decked patio and slate gravelled beds with shrubs. side access via gate. Outside light, outside tap. Shed/Summer house - 14' x 7'10 with power.

PARKING

On street. Resident parking permits required between the hours of Monday to Saturday, 12 - 2pm. These can be obtained at a cost of £80 per vehicle/per year.

COUNCIL TAX

London Borough of Bromley - Band D



Maguire Baylis
104 Beckenham Lane
Shortlands
Bromley
BR2 0DW

Tel: 020 8464 9952
office@maguirebaylis.com
www.maguirebaylis.com



Important Note: Maguire Baylis have made every effort to ensure the accuracy of these particulars. However, intending buyers should satisfy themselves by way of legal enquiries, survey and inspection as to the correctness of each statement. The details contained form no part of any contract and are provided without responsibility on the part of the agents or vendor. We have not carried out a survey or tested any appliances or services. Any reference to alterations made is not a statement that planning/building consent has been obtained. References to the legal title are based on information supplied by the vendor.