

Woburn Place, WC1H

£250,000

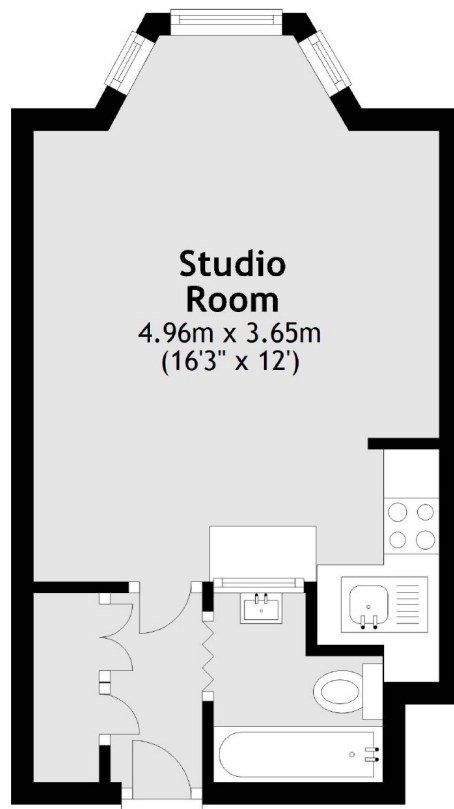
Located at the rear of the building and in excellent condition throughout, the property has an open plan kitchen/living room, built-in storage and bay window.

Located just moments from Russell Square tube station, as well as numerous restaurants and the Brunswick Shopping Centre, this property would make an ideal home or London base.

Features

- Studio Apartment
- Share of Freehold
- Lift Access
- 24 Hour Concierge
- Heating/Hot Water Inc
- No Onward Chain

Woburn Place, London, WC1H



Total area: approx. 22.4 sq. metres (241.1 sq. feet)