



Warwick Court, WC1R

£1,150,000

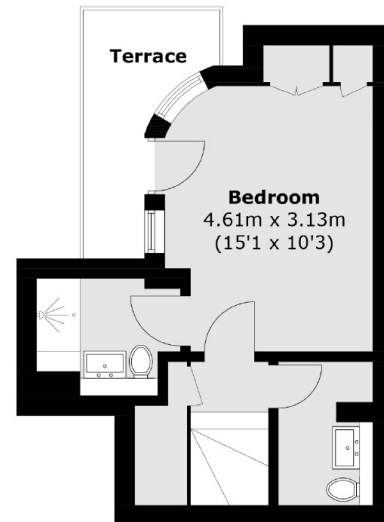
A Luxury two bedroom, two-bathroom Georgian conversion finished to a high standard and arranged over two floors.

Warwick Court is positioned just east of bustling Covent Garden located between the tranquil green spaces of Lincolns Inn fields and cafés Inn Gardens. The area is surrounded by a variety of popular restaurants, bars, cafés and famous theatres.

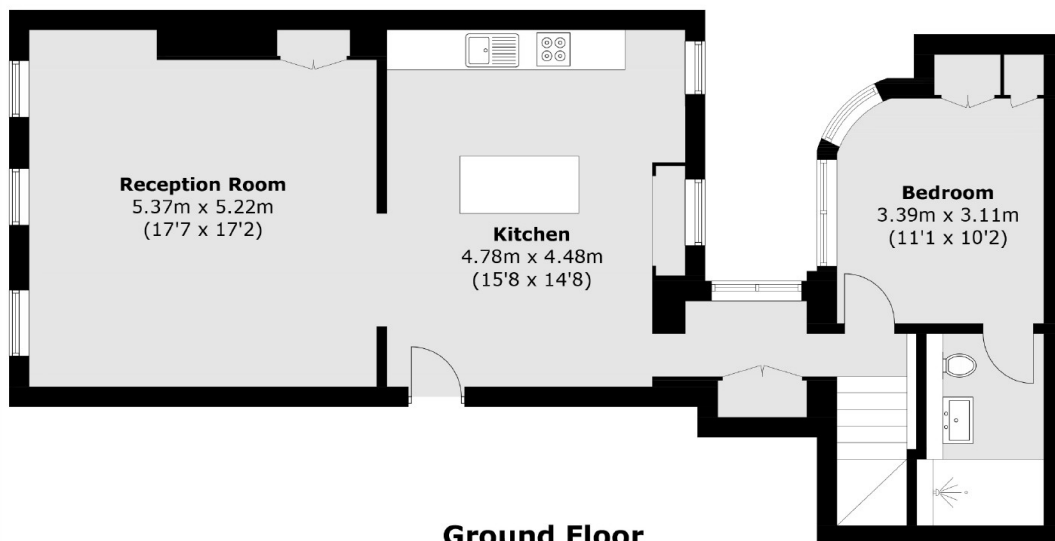
Features

- Two Double Bedrooms
- En-Suite To Master
- Outside Terrace
- Share Of Freehold
- Air conditioning
- No Onward Chain

Warwick Court, London, WC1R



Lower Ground Floor



Ground Floor

Total area (approx.): 102.3 sq. m (1,101.1 sq. ft)
Terrace area (approx.): 4.7 sq. m (50.6 sq. ft)