



Woburn Place, WC1H

£300,000

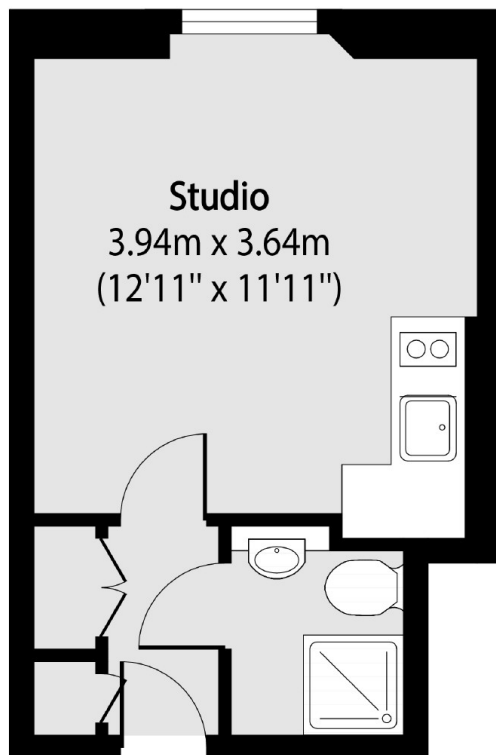
A well appointed 8th floor studio flat in the heart of Bloomsbury in central London. The property is in good decorative condition with an open plan kitchen, great views and lift access.

Russell Court was built in the 1930's and occupies a prominent position close to Russell Square underground station. The area has excellent transport, shopping and restaurants.

Features

- Share Of Freehold
- Eighth Floor
- Lift Access
- 24 Hour Concierge
- Excellent Condition
- No Onward Chain

Woburn Place, London, WC1H



Total area (approx): 18.94 sq m (204 sq. ft)