



## Tavistock Place, WC1H

£600,000

A two double bedroom property on the fifth floor with lift access. The property requires updating and has a separate kitchen and living room with scope to use as a third bedroom.

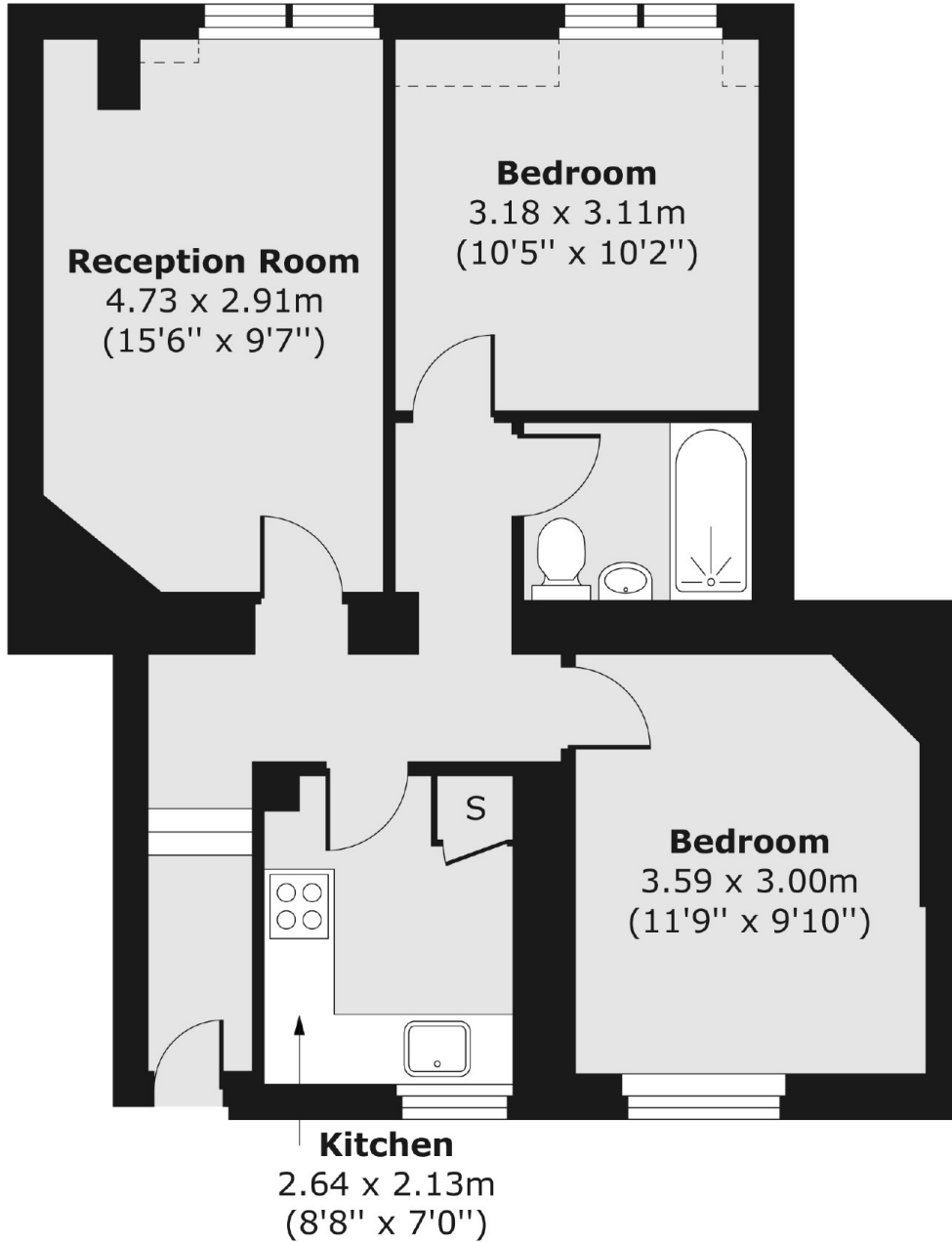
Seymour House is located on Tavistock Place behind the Brunswick Centre which includes a large Waitrose and various shopping outlets. The nearest underground is Russell Square on the Piccadilly line.

### Features

- Two Double Bedrooms
- Period Mansion Block
- Separate Living Room
- Lift Access
- Central Bloomsbury
- 181 Year Lease

Tavistock Place,  
London, WC1H

Fifth Floor



Total area (approx.) 54.76 sq. m (589 sq. ft)