



Judd Street, WC1H

£450,000

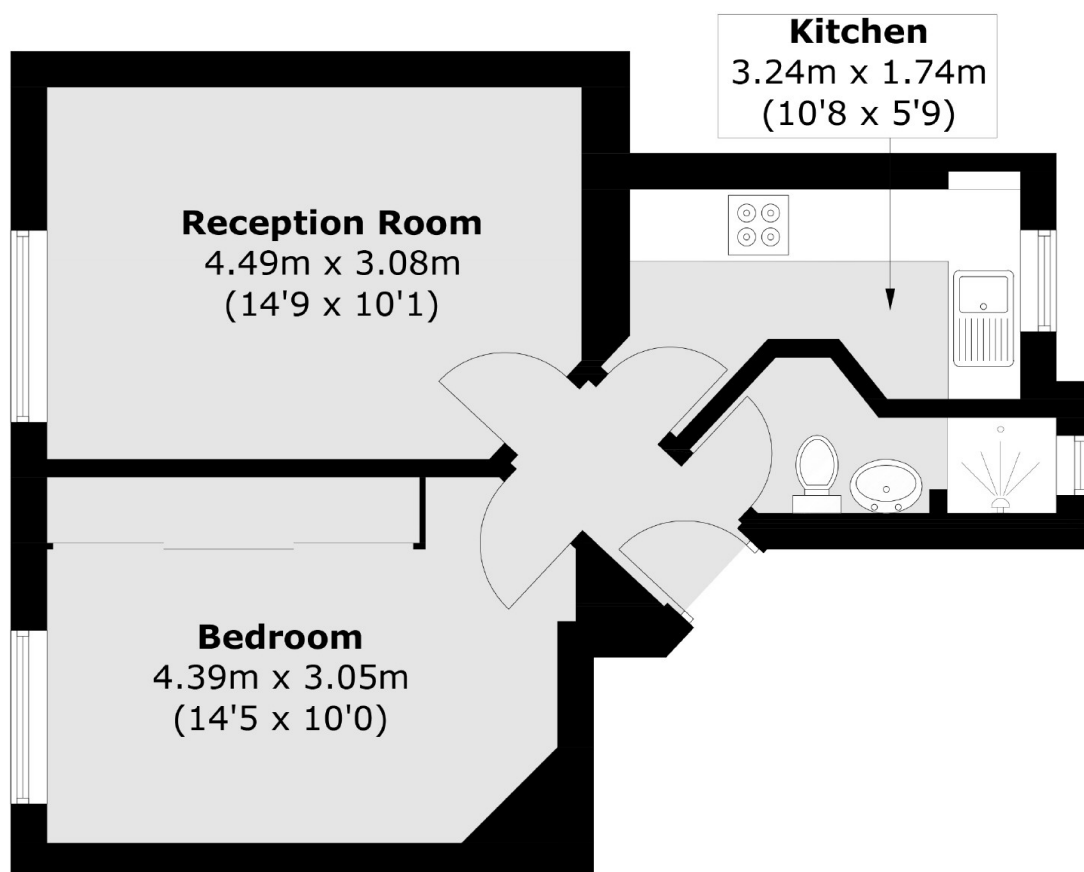
A one bedroom home located on the fourth floor of Queen Alexandra Mansions, the property has a separate living room which could be used as a bedroom, a communal roof terrace and no onward chain.

Queen Alexandra Mansions is a period mansion block located between King's Cross and Bloomsbury. It provides excellent access to transport, London's universities and the West End.

Features

- Excellent Location
- One Double Bedroom
- Separate Kitchen
- Roof Terrace
- Share Of Freehold
- No Onward Chain

Judd Street, London, WC1H



Total area (approx.): 38.9 sq. m (418.7 sq. ft)