



Woburn Place, WC1H

£395 Per week

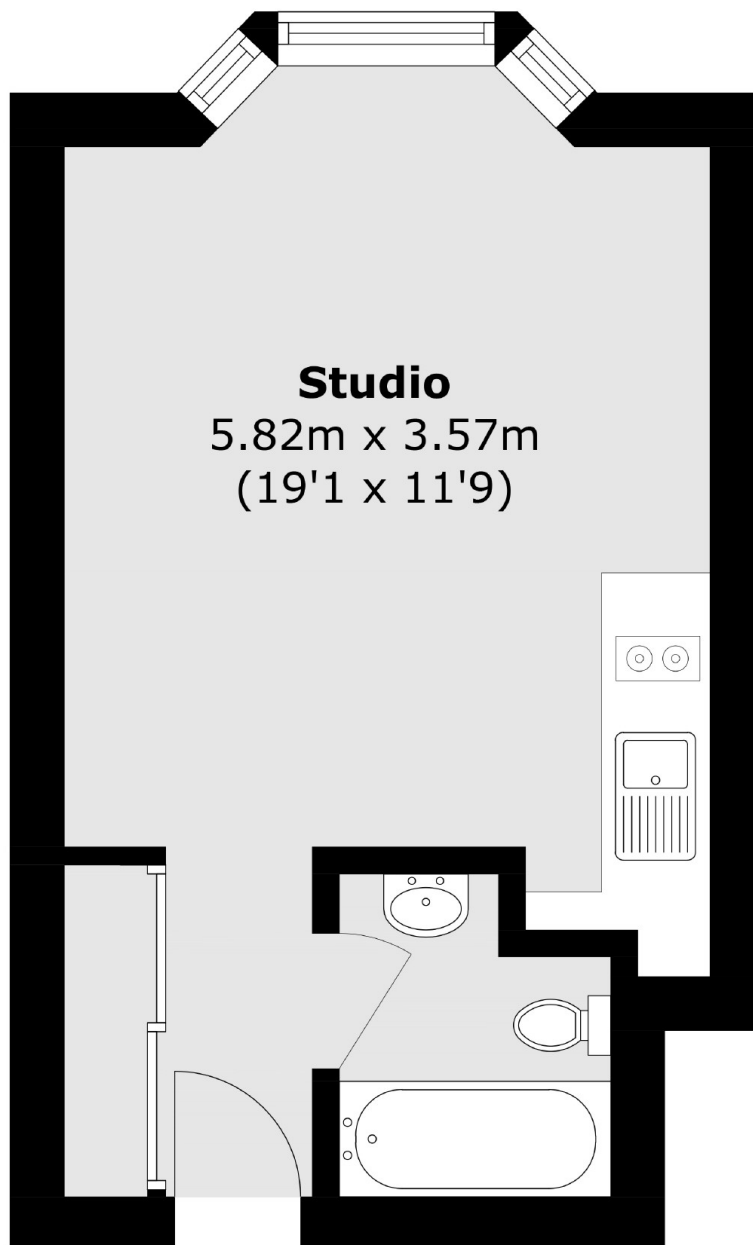
This beautifully refurbished studio apartment in Russell Square offers contemporary living in an unbeatable location. With a sleek modern finish throughout, the property has been renovated from top to bottom, ensuring a fresh and stylish space to call home. Perfectly suited for those seeking convenience, this cosy studio is situated in a prime location, providing easy access to local amenities, transport links, and vibrant city life.

Russell Court is located on Woburn Place around the corner from Russell Square tube station and the Brunswick shopping centre which has a Waitrose supermarket as well as an array of shops, restaurants and a cinema.

Features

Newly Refurbished
Bright and Airy
Move-In Ready
Prime location
Secure Building
Studio

Woburn Place, London, WC1H



Total area (approx.): 20.8 sq. m (223.8 sq. ft)

Dexters

Bloomsbury
55-56 Coram Street
London
WC1N 1HB
Lettings
020 7833 4488

Energy Rating: D. We aim to make our particulars both accurate and reliable. However they are not guaranteed; nor do they form part of an offer or contract. If you require clarification on any points then please contact us, especially if you're traveling some distance to view. Please note that appliances and heating systems have not been tested and therefore no warranties can be given as to their good working order.

 **RICS** | Regulated
Estate Agent
and Letting Agent

[dexters.co.uk](https://www.dexters.co.uk)