



Woburn Place, WC1H

£249,950

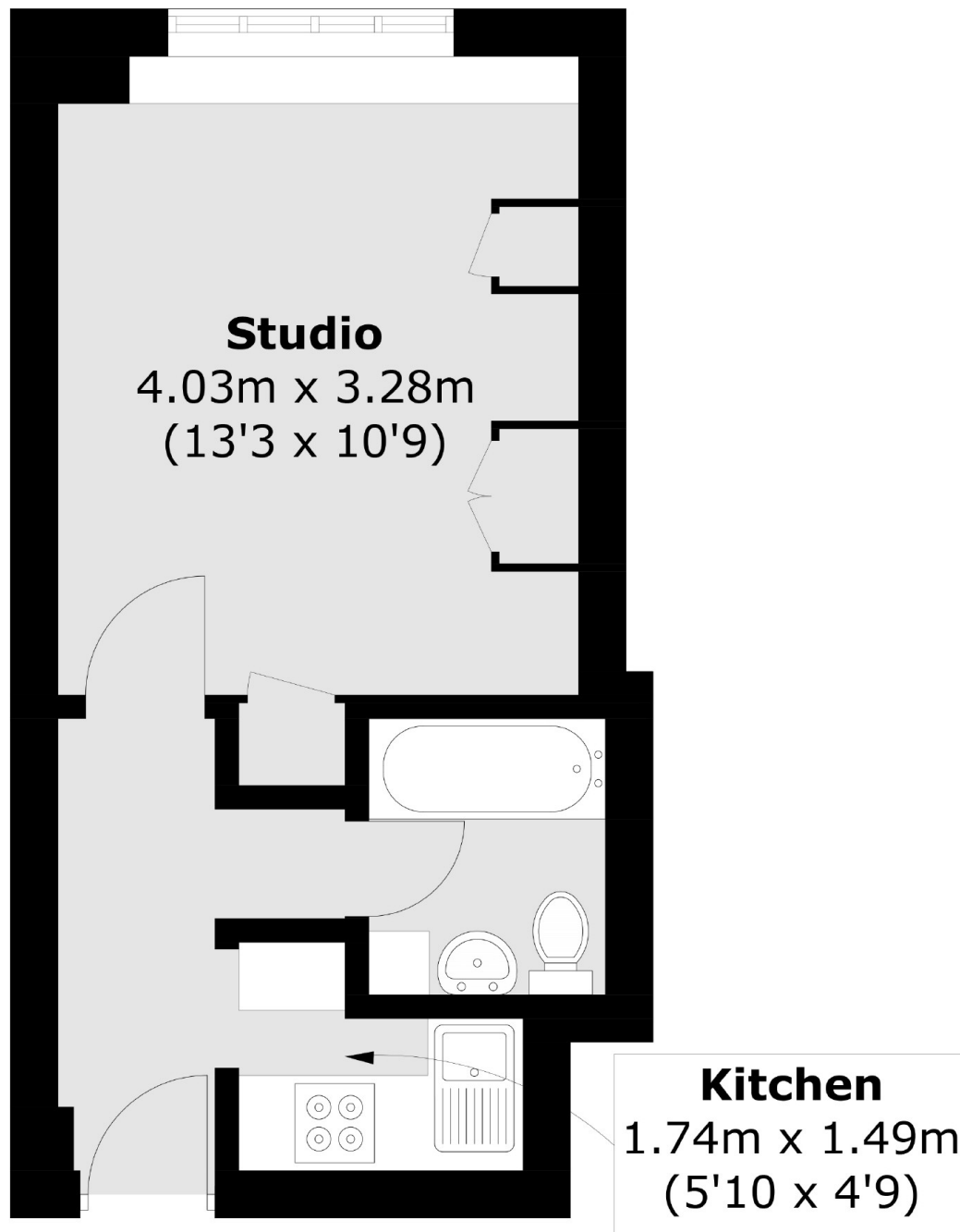
A well appointed studio apartment in the heart of Bloomsbury with a separate kitchen. The property overlooks the quieter Coram Street and is in good decorative order throughout.

Russell Court is a portered mansion block a short walk from Russell Square underground station and near to Euston, King Cross St Pancras and The Brunswick Shopping Centre.

Features

Studio Apartment
Share Of Freehold
24 Hr Porter
Lift Access
7th Floor
No Onward Chain

Woburn Place, London, WC1H



Total area (approx.): 23.1 sq. m (248.6 sq. ft)