



## Woburn Place, WC1H

£255,000

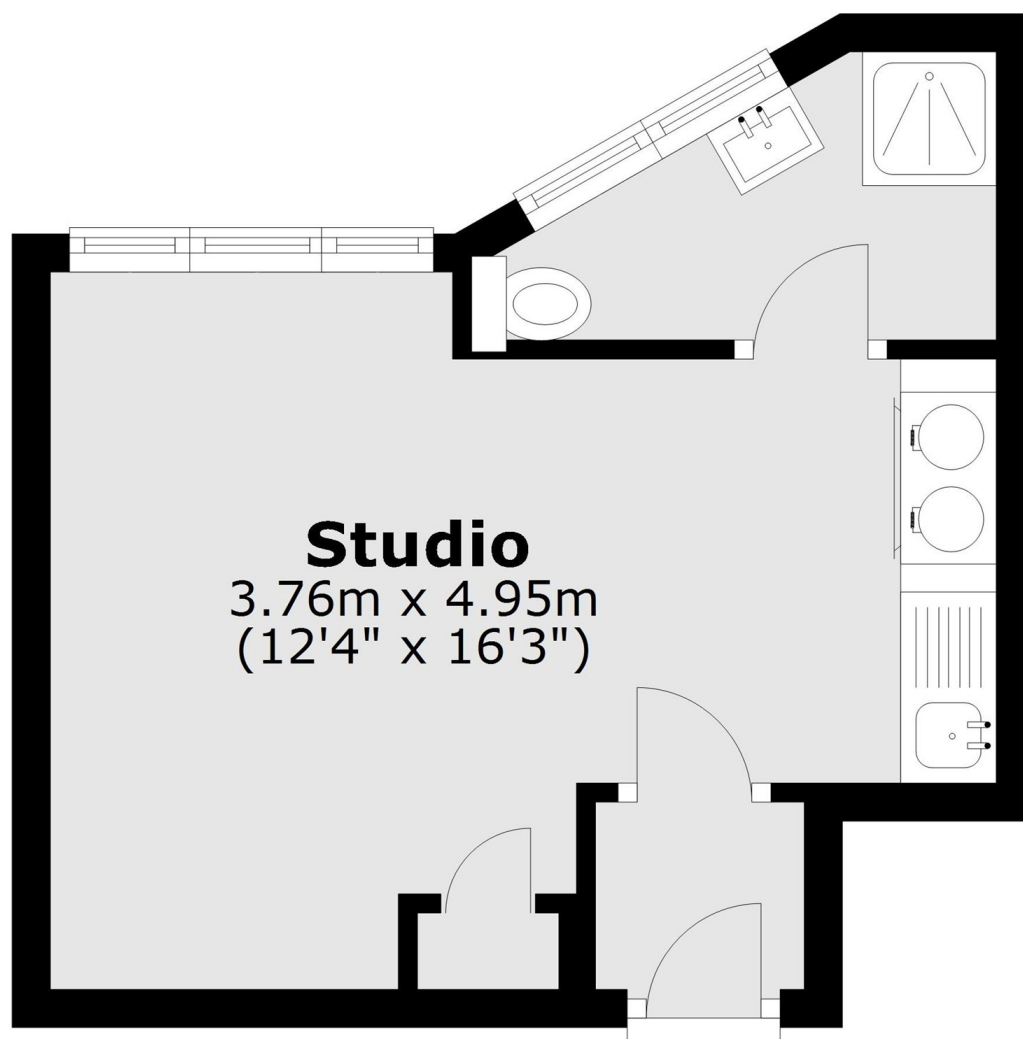
Located on the south side of the block with lots of natural light and far stretching views, this studio apartment has been in the same family for the past 42 years. There is an open plan kitchen living area, an entrance hall and shower room with south facing windows.

Russell Court was built in the 1930's and occupies a prominent position close to Russell Square underground station. The area has excellent transport, shopping and restaurants.

### Features

- South Facing
- Excellent Views
- 24 Hour Concierge
- Lift Access
- Excellent Condition
- No Onward Chain

# Woburn Place, London, WC1H



l area: approx. 19.6 sq. metres (210.5 sq. f