



Judd Street, WC1H

£300,000

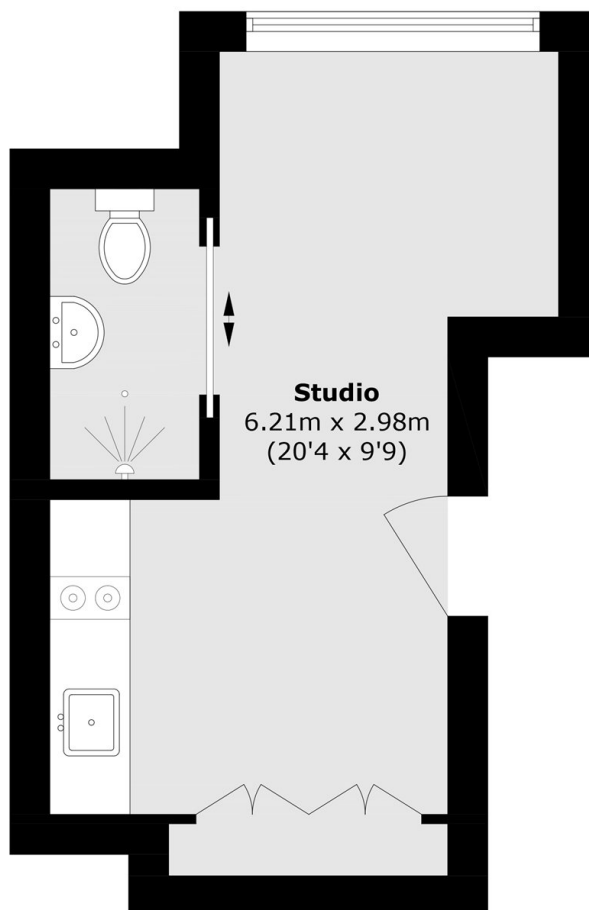
Presenting a contemporary studio apartment located in the vibrant heart of Bloomsbury. This property features a stylish finish and offers access to an on-site gym, a day porter, and convenient laundry facilities.

Albany House is located on Judd Street, conveniently near Russell Square. Both Kings Cross and St Pancras International stations are just a short distance away, along with The Brunswick Centre, which boasts a variety of shops and dining options.

Features

- Top Floor
- Lift Access
- Day Porter
- New Build Interior
- On-site Gym
- No Onward Chain

Judd Street, London, WC1H



Total area (approx.): 18.3 sq. m (196.9 sq. ft)