



Paragon Square, WC1X
£1,300,000

Dexters



Paragon Square, WC1X

A unique, one double bedroom home located on the top floor with a private roof terrace spanning over 500 sq ft. There is a fully integrated kitchen with built-in Siemens appliances opening up to a living/dining room, high ceilings, built in bedroom storage and a family bathroom.

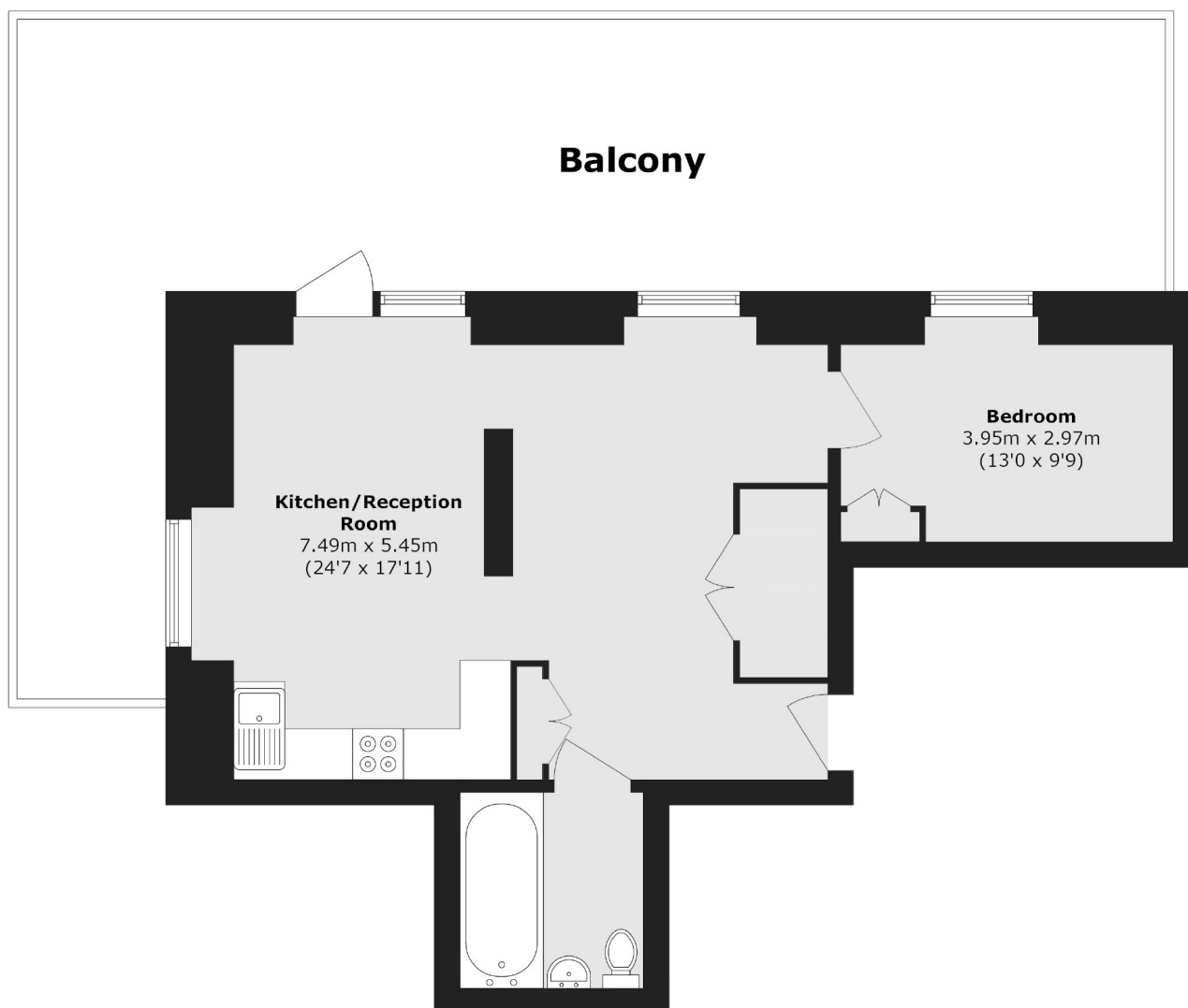
The Postmark is a vibrant new development nestled between Bloomsbury and Clerkenwell, just 0.7 miles from King's Cross St.Pancras. The closest underground station is Russell Square and there are numerous shopping outlets on the doorstep.

Features

- Large Roof Terrace
- 24 Hour Concierge
- Gym, Spa and Lounge
- 997 Year Lease
- Excellent Condition
- No Onward Chain



Paragon Square, London, WC1X



Total area (approx.): 56.8 sq. m (611.3 sq. ft)

Balcony area (approx.): 51.6 sq. m (555.4 sq. ft)