



Camley Street, N1C
£1,050,000

Dexters



Camley Street, N1C

A spacious two double bedroom apartment in The Onyx, King's Cross. The property features a master bedroom with en-suite, comfort cooling throughout, and a private west-facing balcony. Residents benefit from a concierge service and excellent transport links, with Coal Drops Yard and Regent's Canal moments away.

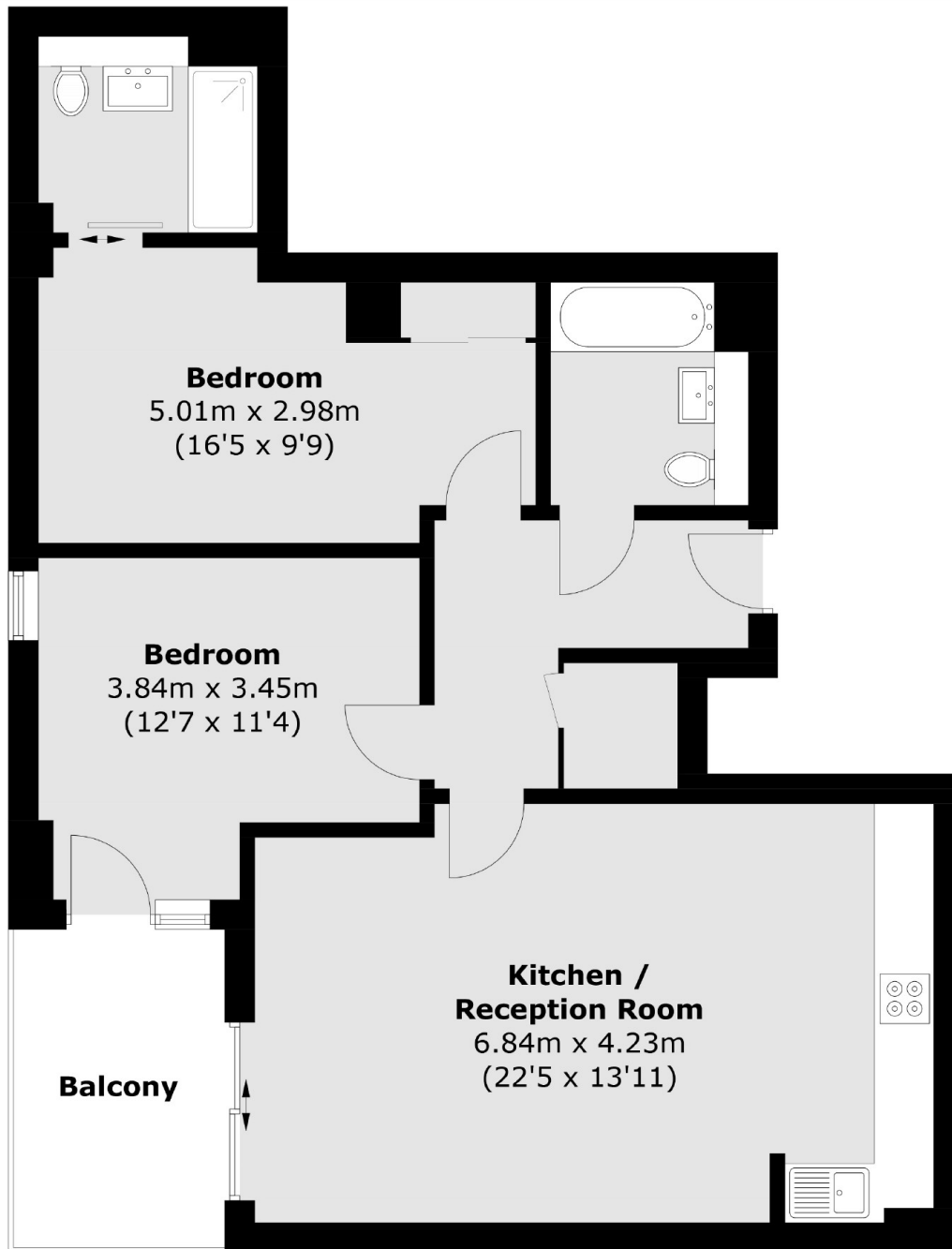
The Onyx is a modern residential building located at Coal Drops Yard in King's Cross. It is within walking distance of King's Cross and St Pancras stations and adjacent to Google's new London headquarters. The area features retail, dining, and restored Victorian architecture along Regent's Canal.

Features

- Two Double Bedrooms
- Two Bathrooms
- West Facing Balcony
- Communal Roof Garden
- Concierge Service
- No Onward Chain



Camley Street, London, N1C



Total area (approx.): 73.5 sq. m (791.1 sq. ft)
Balcony area (approx.): 6.8 sq. m (73.2 sq. ft)

Dexters

Bloomsbury
55-56 Coram Street
London
WC1N 1HB
Sales
020 7833 4466

Energy Rating: C. We aim to make our particulars both accurate and reliable. However they are not guaranteed; nor do they form part of an offer or contract. If you require clarification on any points then please contact us, especially if you're traveling some distance to view. Please note that appliances and heating systems have not been tested and therefore no warranties can be given as to their good working order.

 **RICS** | Regulated
Estate Agent
and Letting Agent

dexters.co.uk