



## Leigh Street, WC1H

£600 Per week

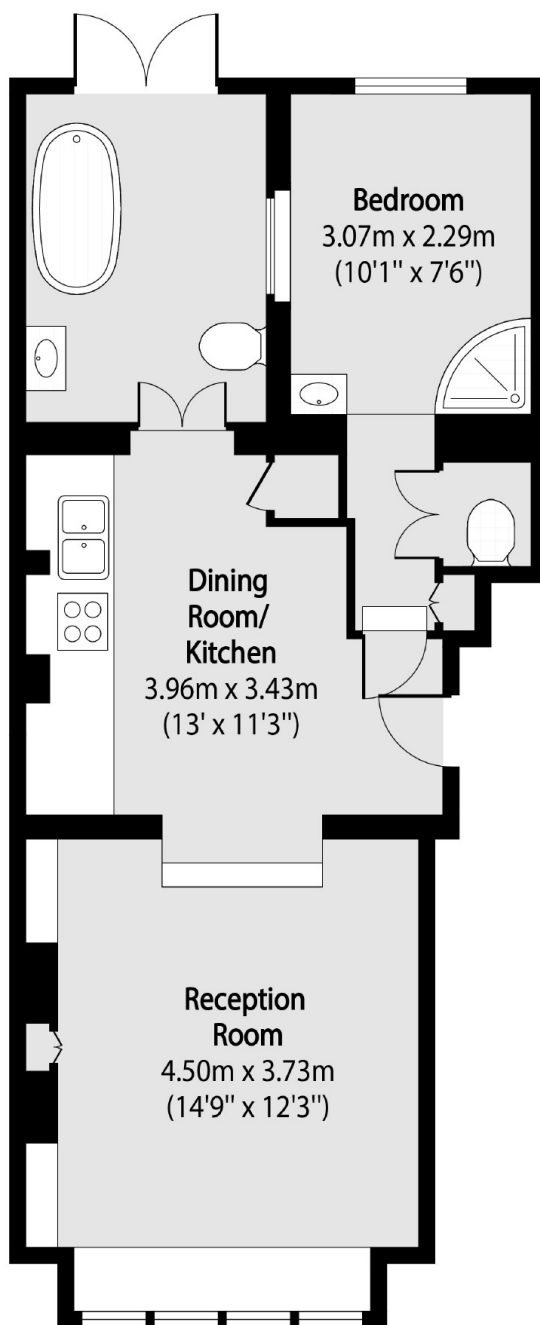
This well presented apartment is configured across the ground floor of a former sweet shop in the heart of Bloomsbury. There is a semi-open plan kitchen, bright living room and a generous bathroom.

Leigh Street is set in the heart of Bloomsbury and offers everything from independent cafés to High Street chains within The Brunswick Centre. The nearest tube station is Russell Square, and King's Cross is less than a quarter mile away.

### Features

Converted Sweet Shop  
Ample Storage  
High Ceilings  
Furnished  
Bright  
Available Now

Leigh Street,  
London, WC1H



Total area (approx): 48.22 sq m (519 sq. ft)

**Dexters**

Bloomsbury  
55-56 Coram Street  
London  
WC1N 1HB  
Lettings  
020 7833 4488

Energy Rating: C. We aim to make our particulars both accurate and reliable. However they are not guaranteed; nor do they form part of an offer or contract. If you require clarification on any points then please contact us, especially if you're traveling some distance to view. Please note that appliances and heating systems have not been tested and therefore no warranties can be given as to their good working order.

 **RICS** | Regulated  
Estate Agent  
and Letting Agent

[dexters.co.uk](https://www.dexters.co.uk)