



Judd Street, WC1H

£750 Per week

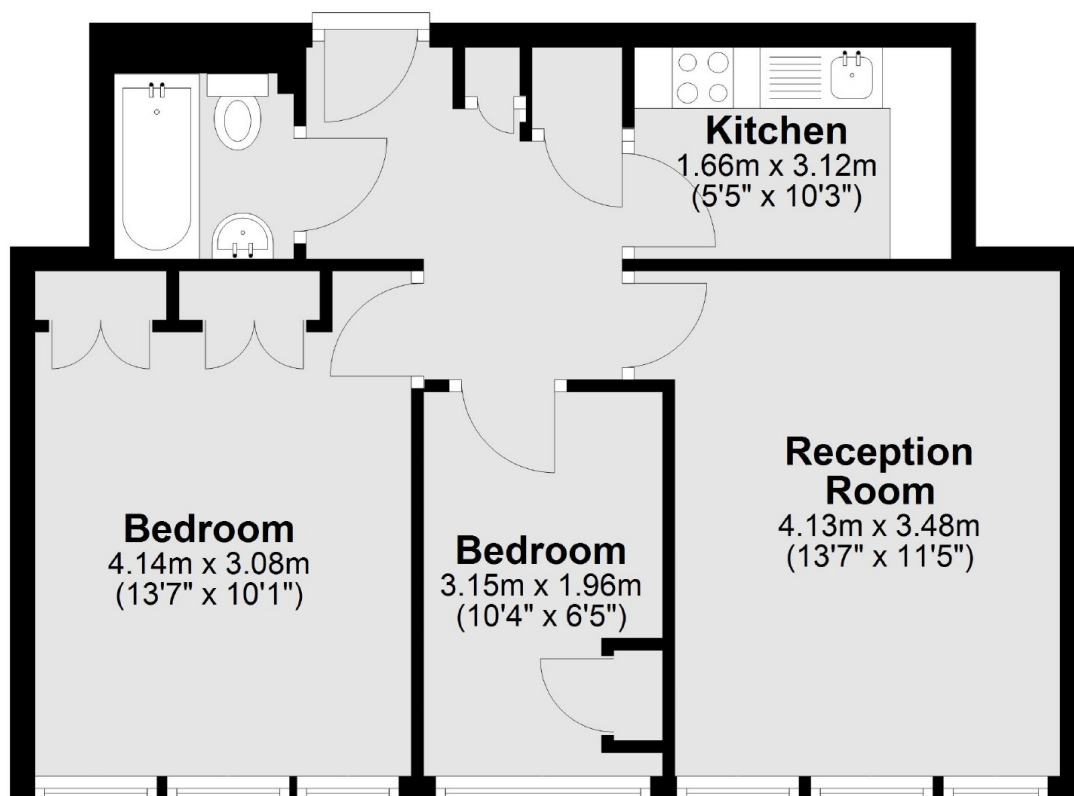
Two double bedroom flat with a spacious living room. It has a daytime time porter at the reception at the entrance to the building. It has three separate rooms and a separate kitchen. Lift access and shower over bath.

Clare Court is a listed art deco block situated but set back from Judd Street in central Bloomsbury. The tube station of Russell Square and Kings Cross are both convenient and nearby. Perfect location for students at UCL, LSE or SOAS.

Features

- Two Bedroom Flat
- Reception Room
- Secure Block
- Separate Kitchen
- Porter
- Close to UCL & SOAS

Judd Street,
London, WC1H



Total area: approx. 47.3 sq. metres (508.8 sq. feet)

Dexters

Bloomsbury
55-56 Coram Street
London
WC1N 1HB
Lettings
020 7833 4488

Energy Rating: C. We aim to make our particulars both accurate and reliable. However they are not guaranteed; nor do they form part of an offer or contract. If you require clarification on any points then please contact us, especially if you're traveling some distance to view. Please note that appliances and heating systems have not been tested and therefore no warranties can be given as to their good working order.

 **RICS** | Regulated
Estate Agent
and Letting Agent

dexters.co.uk