



## Coram Street, WC1N

£725 Per week

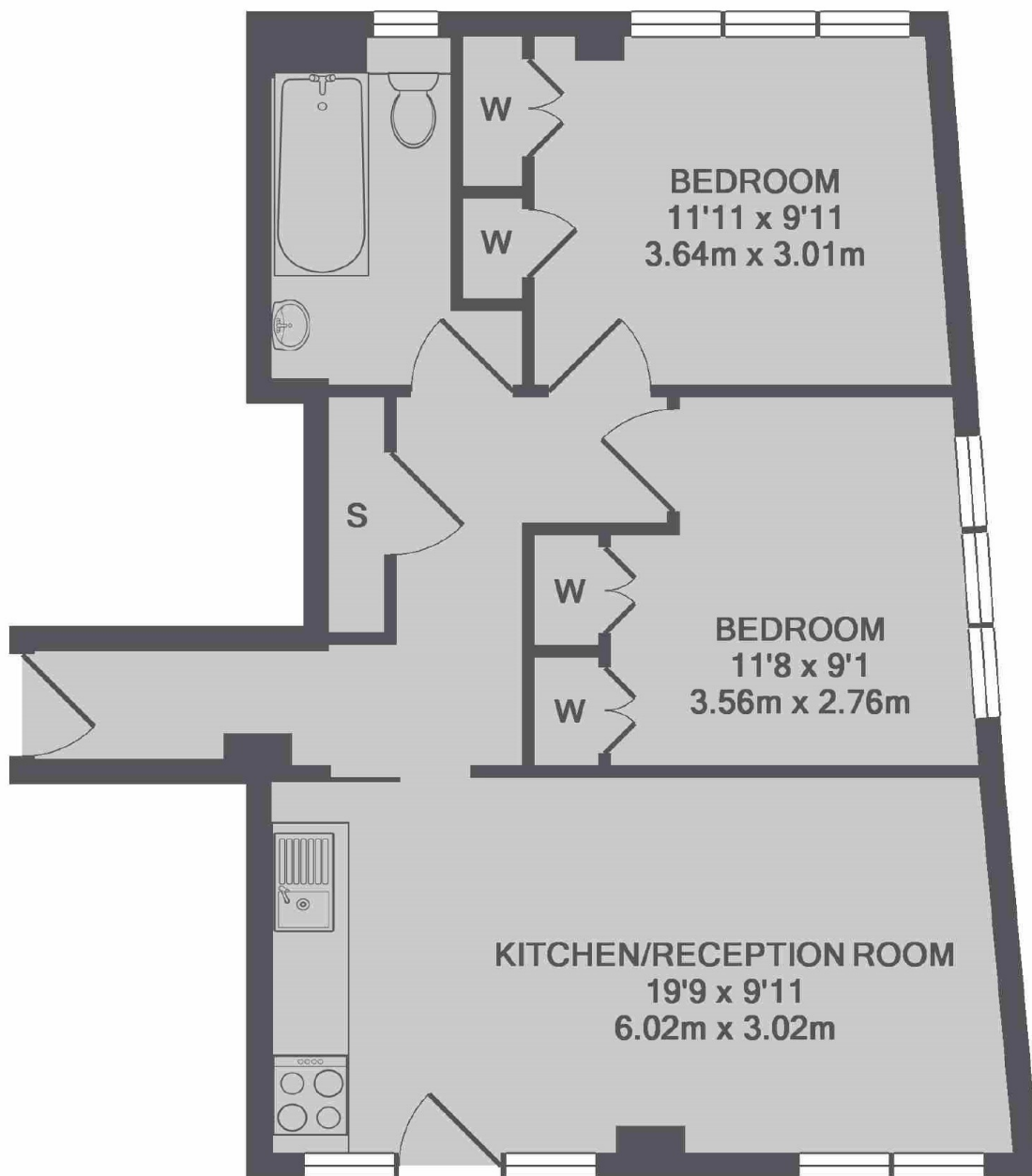
Spacious two double bedroom flat that has been recently refurbished with an open plan kitchen reception and contemporary bathroom. The building has a day porter and is located a few minutes walk from Russell Square.

Coram Street is located 0.1 miles from Russell Square tube station and the Brunswick Centre, which has an array of shops, bars and restaurants, including a Waitrose supermarket.

### Features

- Two Double Bedrooms
- Open Plan Kitchen
- Hot Water & Heating Included
- Contemporary Bathroom
- Porter
- Russell Square Tube

Coram Street,  
London, WC1N



TOTAL APPROX. FLOOR AREA 556 SQ.FT. (51.6 SQ.M.)

**Dexters**

Bloomsbury  
55-56 Coram Street  
London  
WC1N 1HB  
Lettings  
020 7833 4488

Energy Rating: D. We aim to make our particulars both accurate and reliable. However they are not guaranteed; nor do they form part of an offer or contract. If you require clarification on any points then please contact us, especially if you're traveling some distance to view. Please note that appliances and heating systems have not been tested and therefore no warranties can be given as to their good working order.

**RICS** Regulated  
Estate Agent  
and Letting Agent

[dexters.co.uk](http://dexters.co.uk)