



Chalton Street, NW1

£575 Per week

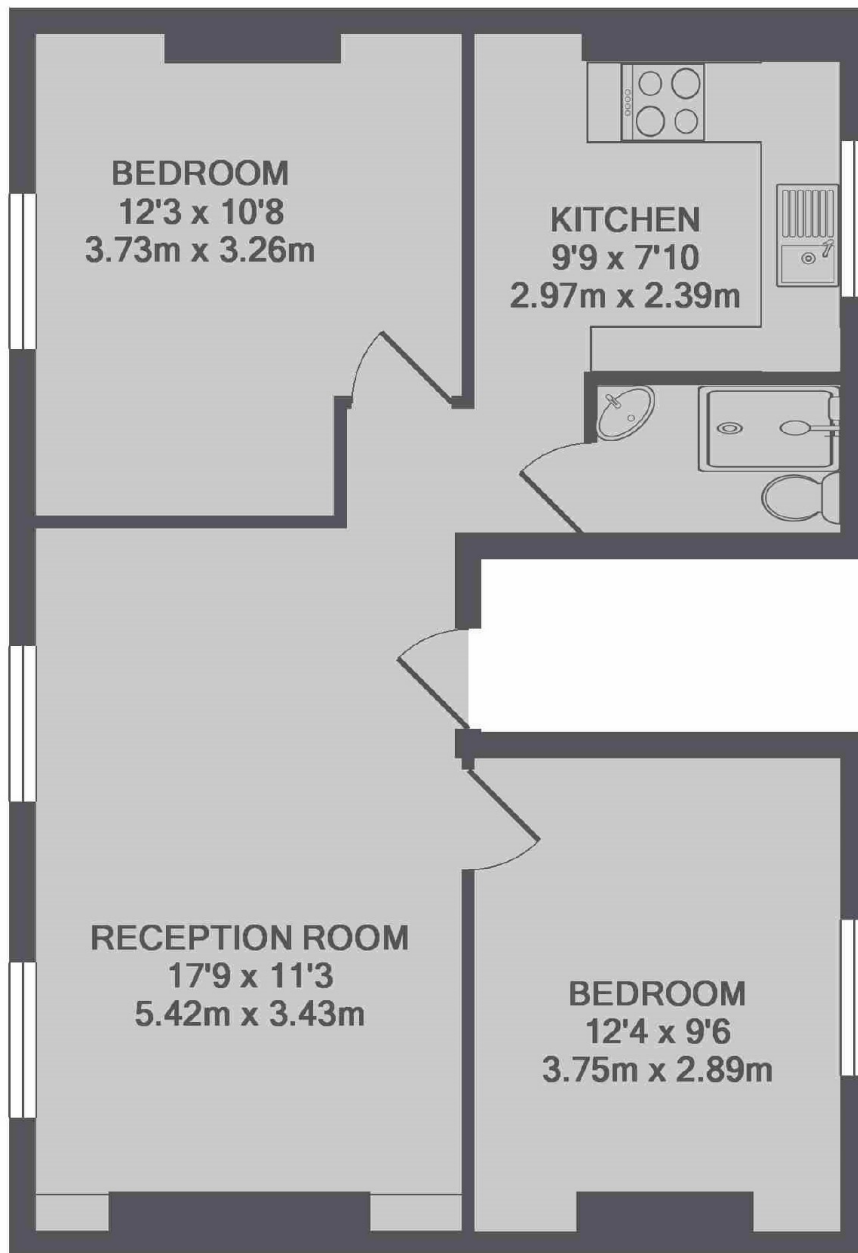
Spacious two double bedroom flat located on the first floor of a period conversion. Good size reception room, separate kitchen with washing machine and dishwasher. Smart shower room and good storage space.

Chalton Street is located close to King's Cross Station giving you access to local transport and an array of shops, bars and restaurants.

Features

- Two Double Bedrooms
- Reception Room
- Shower Room
- Separate Kitchen
- First Floor
- King's Cross

Chalton Street,
London, NW1



TOTAL APPROX. FLOOR AREA 573 SQ.FT. (53.2 SQ.M.)

Dexters

Bloomsbury
55-56 Coram Street
London
WC1N 1HB
Lettings
020 7833 4488

Energy Rating: C. We aim to make our particulars both accurate and reliable. However they are not guaranteed; nor do they form part of an offer or contract. If you require clarification on any points then please contact us, especially if you're traveling some distance to view. Please note that appliances and heating systems have not been tested and therefore no warranties can be given as to their good working order.

 **RICS** | Regulated
Estate Agent
and Letting Agent

[dexters.co.uk](https://www.dexters.co.uk)