

Coram Street, WC1N

£923 Per week

This spacious three double bedroom flat (no reception) is situated in the popular Witley Court with a porter and lift in the building. It has a large separate eat-in kitchen and includes hot water and heating.

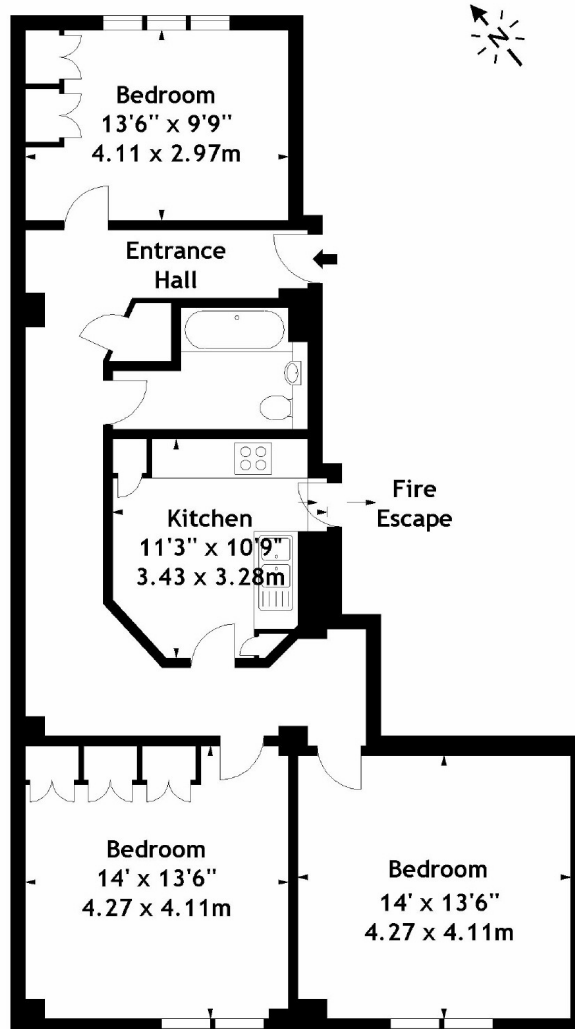
Witley Court is a purpose built mansion block situated next to Russell Square. It has an on site day porter, lifts to all floors and has hot water and heating included. It is very well located for UCL, SOAS and Kings Cross with the Brunswick Centre on the doorstep..

Features

- Three Double Bedrooms
- Porter
- UCL & SOAS Nearby
- Heating & Hot Water Inc
- Lift
- Large Separate Kitchen

Coram Street,
London, WC1N

Witley Court, WC1
Approx. Gross Internal Area
934 Sq Ft - 86.77 Sq M



Second Floor

Measured in accordance with RICS guidelines. Every attempt is made to ensure accuracy, however all measurements are approximate.

This floor plan is for illustrative purposes only and is not to scale.

© Datography UK Ltd 2008

Photographs * Floorplans * Virtual Tours

Tel: 08707 66 30 30 www.datography.com

Dexters

Bloomsbury
55-56 Coram Street
London
WC1N 1HB

Lettings
020 7833 4488

Energy Rating: B. We aim to make our particulars both accurate and reliable. However they are not guaranteed; nor do they form part of an offer or contract. If you require clarification on any points then please contact us, especially if you're traveling some distance to view. Please note that appliances and heating systems have not been tested and therefore no warranties can be given as to their good working order.

 **RICS** | Regulated
Estate Agent
and Letting Agent

dexters.co.uk