



**Old Gloucester Street, WC1N**  
**£1,600,000**



## Old Gloucester Street, WC1N

Dating from the early 18th century, this Georgian Grade II listed property offers over 1,200 sq ft of internal space. Period character is evident in the original wood panelling, high ceilings finished with cornice work and classic sash windows. The principal rooms each feature an open fireplace, while the dining area still houses its cast-iron Georgian range cooker. At the rear, two brick-barrel vaults provide secure, dry storage, as well as a private west-facing courtyard, ideal for afternoon and evening light.

Old Gloucester Street is a quiet residential street located in the Bloomsbury area of Central London (WC1). It lies between Queen Square to the west and Lamb's Conduit Street to the east, offering easy access to both green space and local amenities. Queen Square is known for its historic medical institutions and peaceful gardens, while Lamb's Conduit Street is a popular destination for independent shops, cafés, and boutiques. The area is well connected by public transport and close to major academic and healthcare institutions, including University College London and Great Ormond Street Hospital. Overall, this part of WC1 combines central convenience with a mix of residential calm and vibrant local character.

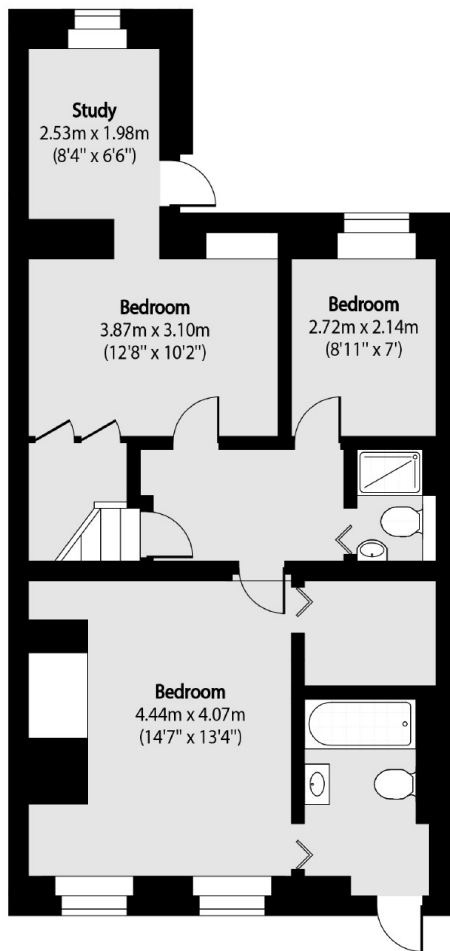
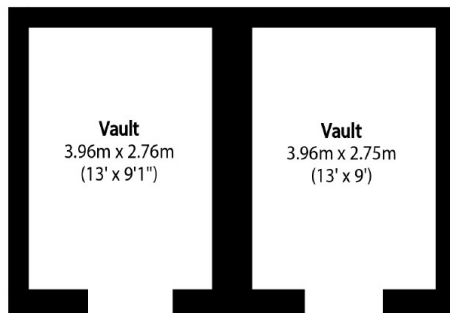
### Features

- Grade II Listed
- Three Bedrooms
- Original Period Features
- Private West Facing Garden
- Excellent Location
- No Onward Chain

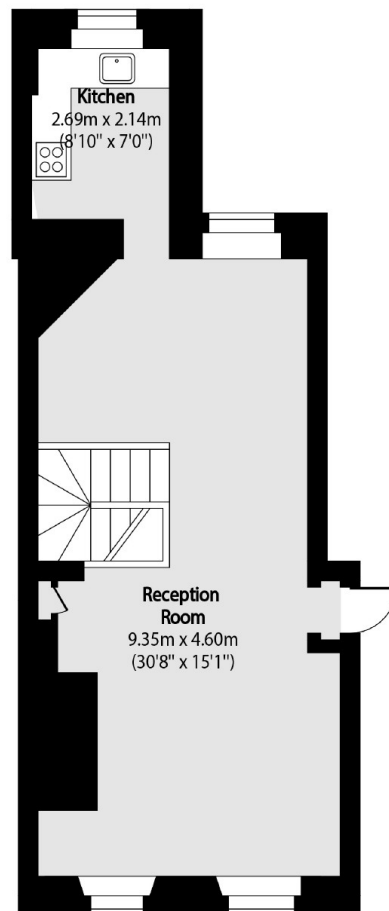




# Old Gloucester Street, London, WC1N



Lower Ground Floor



Ground Floor

Total area (approx): 112.13 sq m (1207 sq. ft)

(Excluding Vault)

Vaults Total area (approx): 24.80 sq m (267 sq. ft)