

Oakley Square, NW1

£325,000

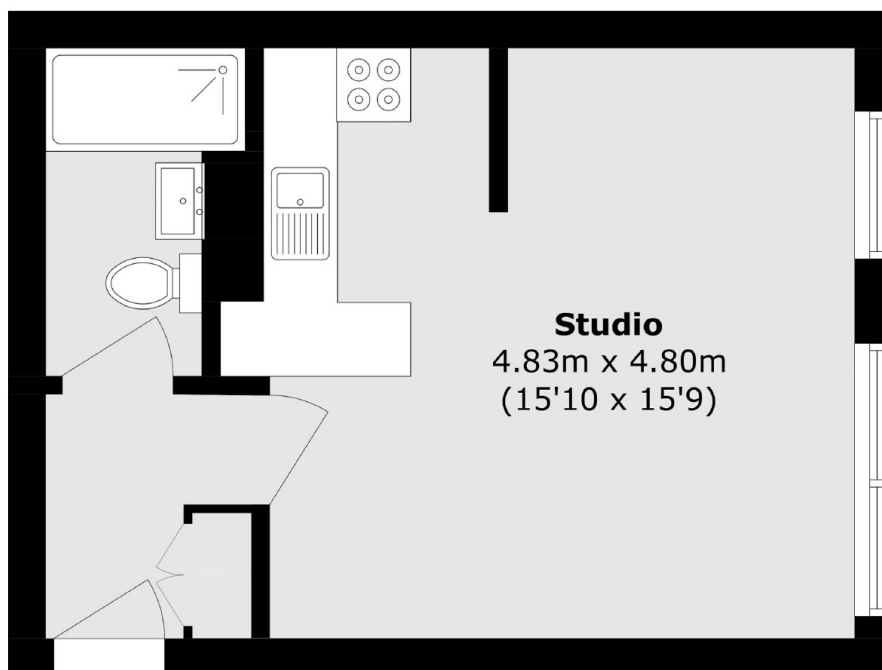
A well appointed, studio apartment in excellent condition and offered with no onward chain. There is a re-fitted family bathroom with built-in storage and extractor, a re-fitted kitchen with built-in appliances and breakfast bar and an open plan living and bedroom area.

Mayford is moments from Mornington Crescent and Euston Station and has a selection of shops and restaurants nearby.

Features

- Studio Apartment
- Built-In Storage
- Excellent Condition
- Double Glazed Windows
- Re-Fitted Kitchen/Bathroom
- No Onward Chain

Oakley Square, London, NW1



Total area (approx.): 31.5 sq. m (339.0 sq. ft)