



Marchmont Street, WC1N

£850 Per week

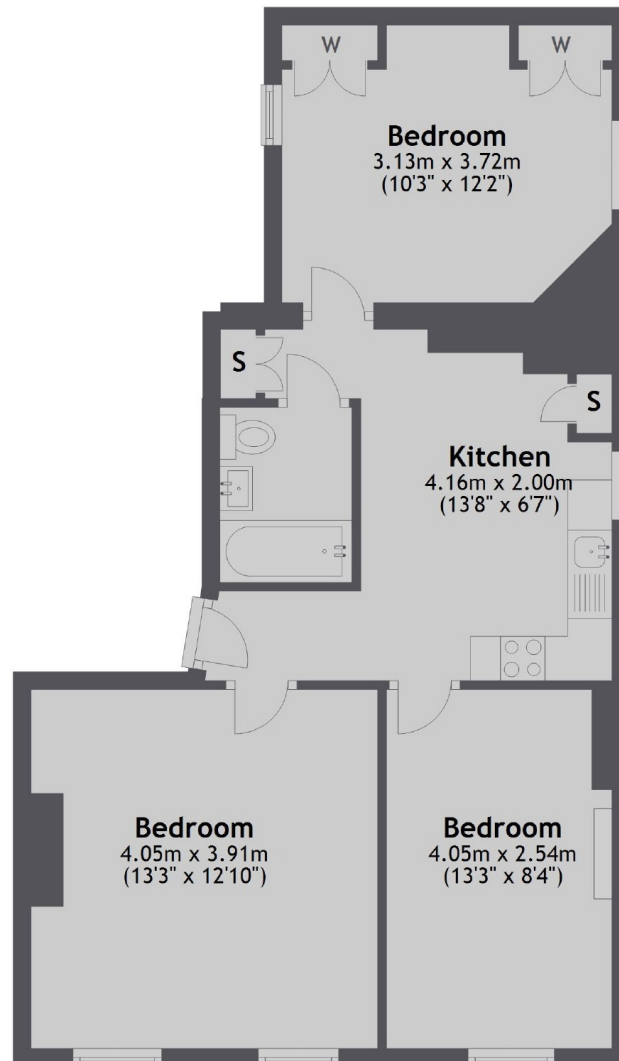
Light double aspect first floor flat situated on the corner of Tavistock Place and Marchmont Street. It has three double bedrooms, an open plan modern kitchen/reception room, modern tiled bathroom and laminate flooring throughout.

Located on this popular street with a selection of shops and cafés including the Brunswick Centre that has a Waitrose supermarket and many more shops and restaurants. Russell Square tube station is also just 0.2 miles away.

Features

- Three Double Bedrooms
- Double Aspect
- High Ceilings
- Air Conditioning
- New Modern Kitchen
- Excellent Location

Marchmont Street,
London, WC1N



First Floor

Total area: approx. 57.5 sq. metres (618.9 sq. feet)