



Sandwich Street, WC1H

£575 Per week

A well presented one double bedroom Fourth floor flat to let within a red brick period mansion block with a bright living room, modern kitchen and bathroom. A double bedroom and access to an impressive residents only roof garden.

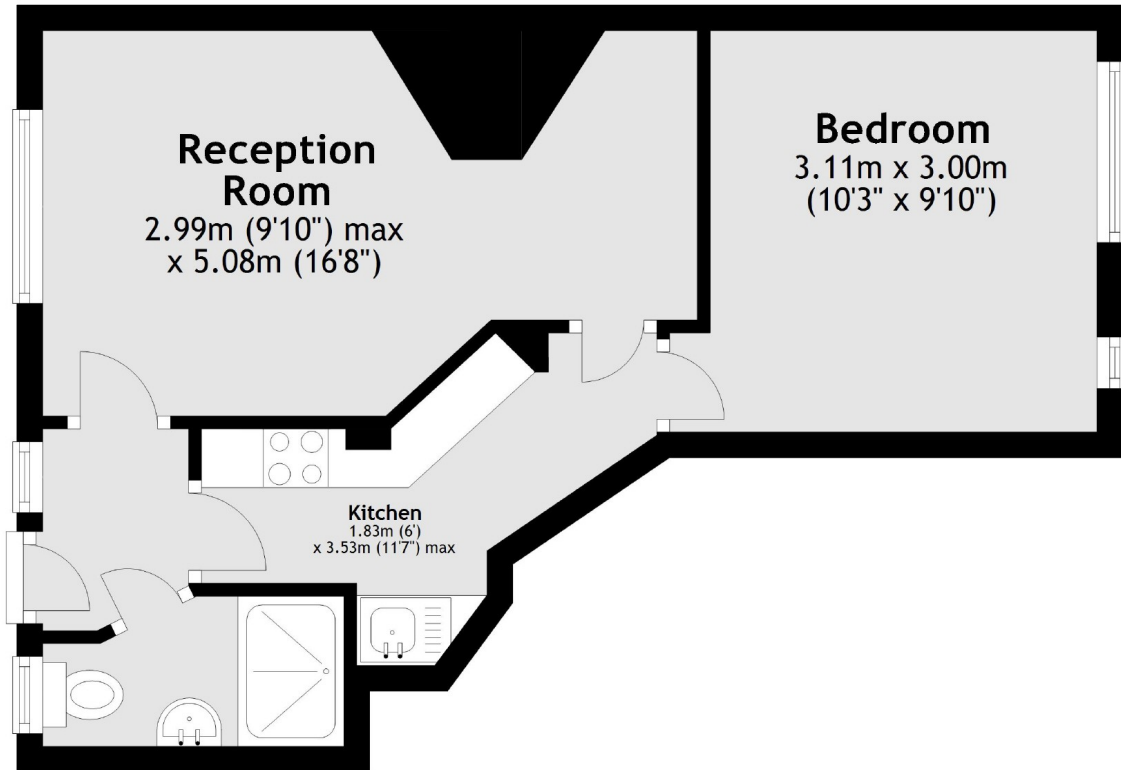
Sandwich House is a well regarded mansion block in the heart of Bloomsbury, there is an array of amenities including King's Cross to the north and Russell Square to the south.

Features

Period Mansion Block
Separate Living Room
Excellent Condition
Communal Roof Terrace
Central Bloomsbury

Sandwich Street,
London, WC1H

Fourth Floor



Total area: approx. 33.7 sq. metres (362.3 sq. feet)