



New Wharf Road, N1

£693 Per week

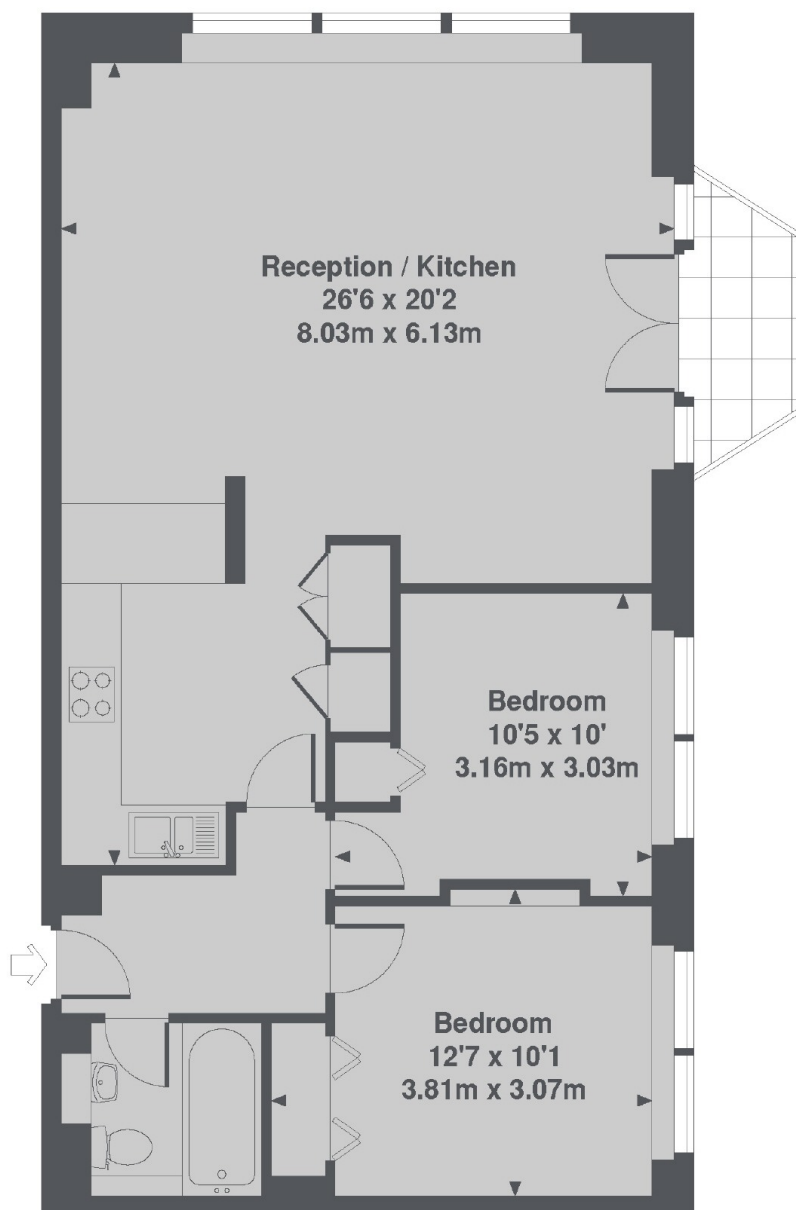
This spacious two bedroom flat is in popular King's Cross canal side development Ice Wharf with a 24 hour concierge and lift in the building. It has a large open plan kitchen, modern feel throughout and great views. Available unfurnished.

Ice Wharf is a short distance from King's Cross which is now a very popular destination in it's own right with its bars, restaurants and shop. It is of course the ultimate transport hub to get anywhere in London or Europe.

Features

- Canal Side Development
- Concierge
- King's Cross Nearby
- Excellent Transport Links
- Open Plan
- Great Views

New Wharf Road, London, N1



5th Floor

Ice Wharf, New Wharf Road, N1
Total Approx. Floor area 719 Sq. Ft. (66.8 Sq. M.)

Dexters

Bloomsbury
55-56 Coram Street
London
WC1N 1HB
Lettings
020 7833 4488

Energy Rating: E. We aim to make our particulars both accurate and reliable. However they are not guaranteed; nor do they form part of an offer or contract. If you require clarification on any points then please contact us, especially if you're traveling some distance to view. Please note that appliances and heating systems have not been tested and therefore no warranties can be given as to their good working order.

 **RICS** | Regulated
Estate Agent
and Letting Agent

[dexters.co.uk](https://www.dexters.co.uk)