

Judd Street, WC1H

£300,000

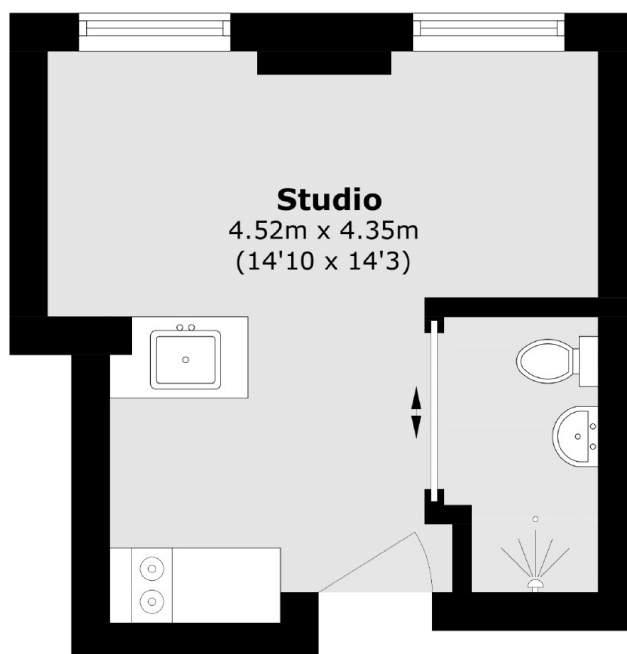
A well presented studio apartment in the heart of Bloomsbury. The property is in excellent condition throughout and would make an ideal London base or 'Buy to Let' investment.

Albany House is situated on Judd Street, Russell Square, Kings Cross and St Pancras International stations are all close by, as well as The Brunswick Centre with its array of shops and restaurants.

Features

- Studio Apartment
- Fitness Suite
- Close To Transport
- Excellent Amenities
- Day Porter
- No Onward Chain

Judd Street, London, WC1H



Total area (approx.): 17.8 sq. m (191.5 sq. ft)