

Woburn Place, WC1H

£290,000

A beautifully finished studio apartment located on the quiet side of Russell Court. The property includes a re-fitted kitchen with built-in appliances, a bay window with double glazed windows and a family bathroom. The property comes with a share of freehold and 24 concierge service.

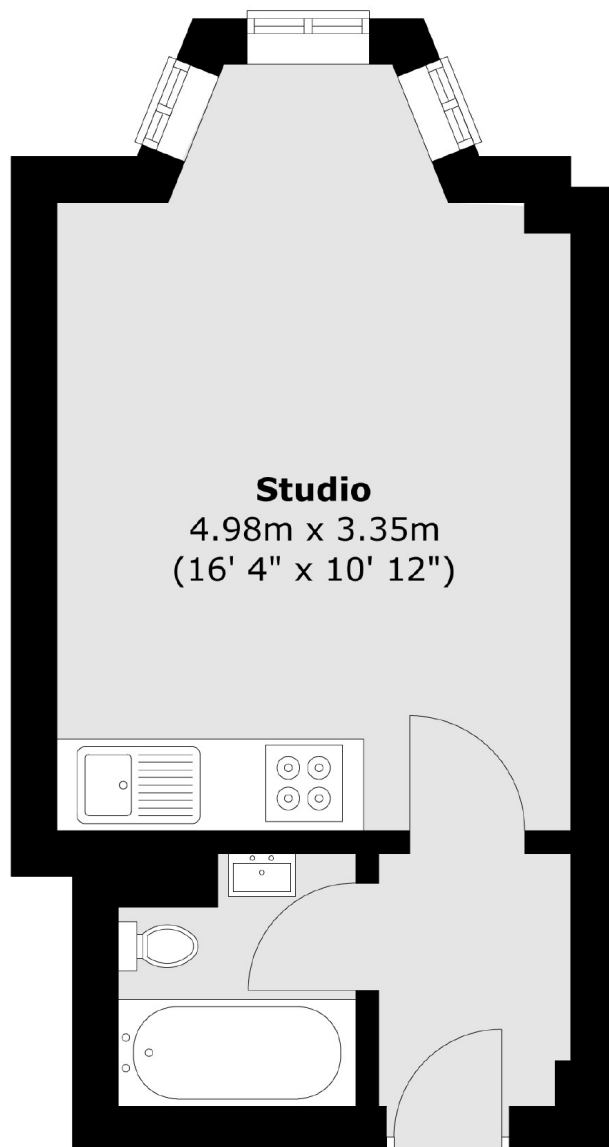
Located just moments from Russell Square tube station and the Brunswick Centre with a Waitrose supermarket as well as many shops and restaurants. The West End and the Eurostar terminal at St Pancras are less than half a mile.

Features

- Studio Apartment
- Share Of Freehold
- 24 Hour Concierge
- Lift Access
- Heating & Hot Water Included
- No Onward Chain

Woburn Place, London, WC1H

Second Floor



Total area (approx.) : 19.5 sq. m (210 sq. ft)