



Mecklenburgh Square, WC1N

£4,250,000

Dexters



Mecklenburgh Square, WC1N

This exceptional five-story townhouse is currently arranged as three separate apartments, offering a unique investment opportunity or the potential to create a stunning single-family residence (subject to planning permission). Rich in period charm, the property features soaring ceilings, large sash windows, and elegant architectural details that showcase picturesque views over the prestigious, residents-only Mecklenburgh Square, a tranquil green oasis reserved exclusively for those fortunate enough to call this area home.

The lower ground floor is accessed via a private staircase and comprises a spacious one-bedroom apartment with direct access to a charming rear courtyard garden, an ideal retreat for outdoor relaxation. On the ground floor, the impressive front door opens into a grand hallway leading to a well-proportioned one-bedroom apartment. Ascend the elegant staircase from the ground floor to the upper maisonette, arranged as a versatile four-bedroom residence with a study, perfect for modern living. This remarkable property presents endless possibilities in a prime location, blending historic elegance with the potential for luxurious contemporary living.

Situated on the exclusive Mecklenburgh Square, this property offers residents access to a peaceful garden square in the heart of central London. Just moments from Lamb's Conduit Street, known for its charming boutiques and cafés, the West End's theatres, shopping, and dining are also nearby, offering a vibrant lifestyle. With the Royal Courts of Justice and legal district within easy

Features

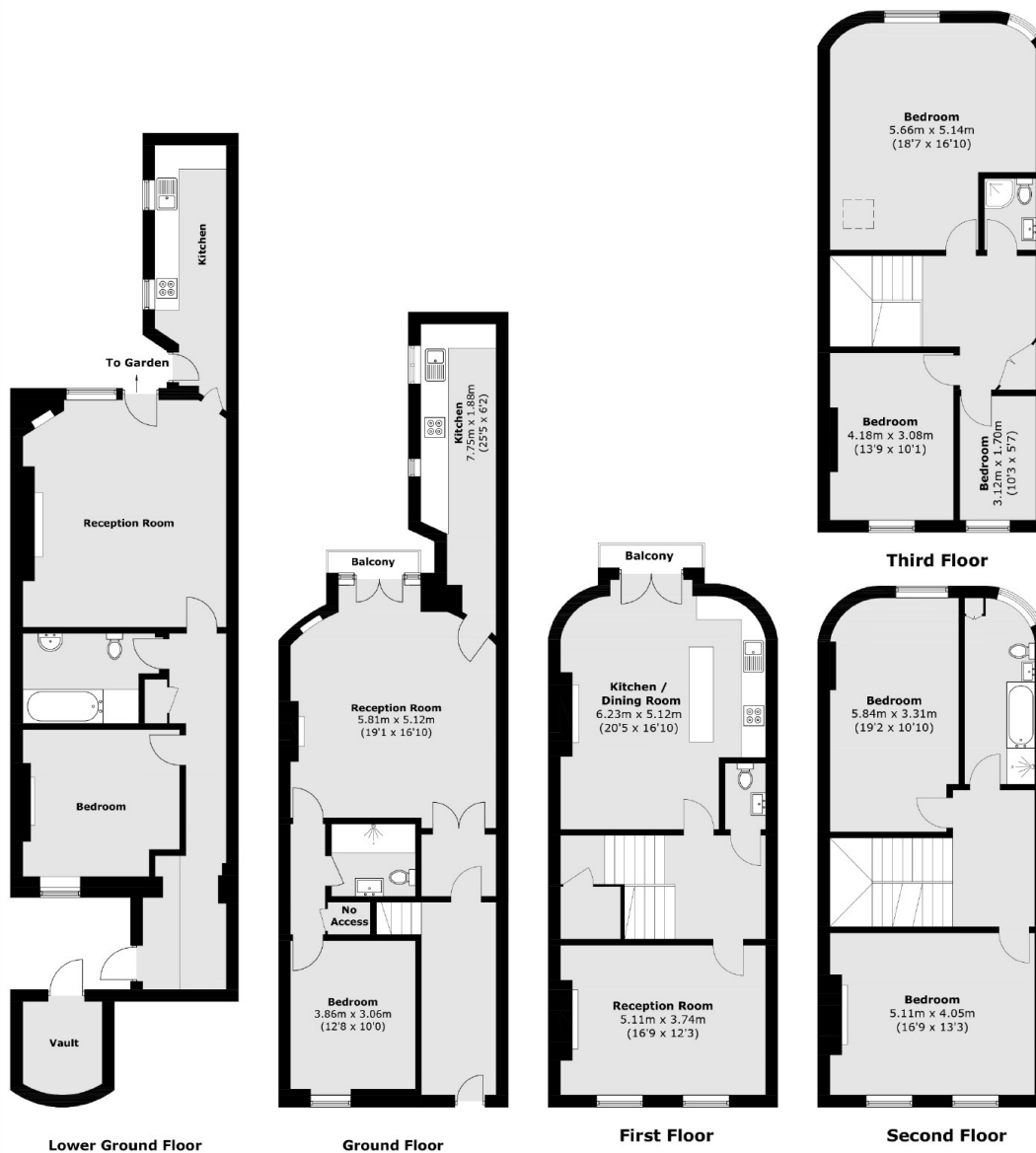
- Freehold House
- Development Opportunity
- Original Period Features
- Georgian Grade II Listed
- Access To Private Square
- No Onward Chain







Mecklenburgh Square, London, WC1N



Total Area (approx): 263.9 sq. m (2,840.5 sq. ft)
(Excluding Vault / Lower Ground Floor)
Balcony: 2.7 sq. m (29 sq. ft)

Dexters

Bloomsbury
55-56 Coram Street
London
WC1N 1HB
Sales
020 7833 4466

Energy Rating: D. We aim to make our particulars both accurate and reliable. However they are not guaranteed; nor do they form part of an offer or contract. If you require clarification on any points then please contact us, especially if you're traveling some distance to view. Please note that appliances and heating systems have not been tested and therefore no warranties can be given as to their good working order.

 **RICS** | Regulated
Estate Agent
and Letting Agent

dexters.co.uk