



## Rosebery Court, EC1R

£645,000

A well appointed two bedrooms home located on the third floor with lift access. The property has a bright dual aspect windows living room, a separate kitchen with built in appliances. Rosebery Court is a secure block with a day porter.

Located in the heart of the City, Rosebery Court offers excellent transportation to both the City and West End. Local amenities include Exmouth Market and Lamb's Conduit Street, making this development a perfect apartment for city commuters and London lovers alike.

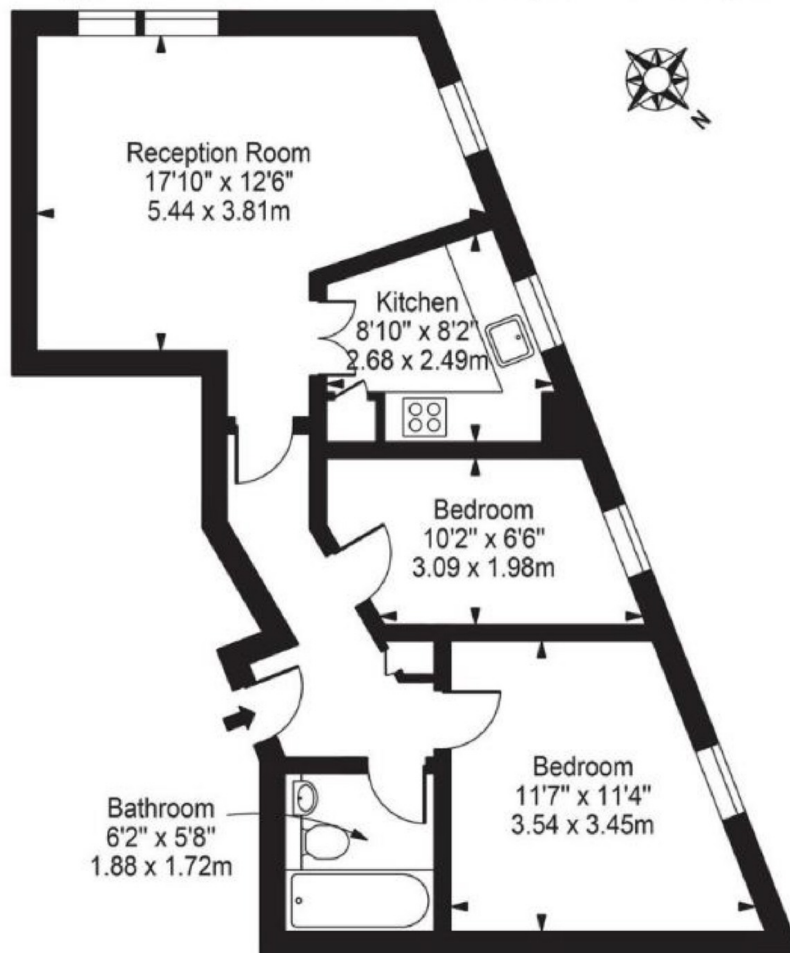
### Features

- Two Bedrooms
- Dual Aspect Windows
- Lift Access
- Communal Garden
- Excellent Transport
- No Onward Chain

# Rosebery Court, London, EC1R

## Rosebury Court, EC1R 5HP

Approx. Gross Internal Area 576 Sq Ft - 53.47 Sq M



### Third Floor

For Illustration Purposes Only - Not To Scale

This floor plan should be used as a general outline for guidance only and does not constitute in whole or in part an offer or contract. Any intending purchaser or lessee should satisfy themselves by inspection, searches, enquiries and full survey as to the correctness of each statement. Any areas, measurements or distances quoted are approximate and should not be used to value a property or be the basis of any sale or let.

# Dexters

Bloomsbury  
55-56 Coram Street  
London  
WC1N 1HB  
Sales  
020 7833 4466

Energy Rating: C. We aim to make our particulars both accurate and reliable. However they are not guaranteed; nor do they form part of an offer or contract. If you require clarification on any points then please contact us, especially if you're traveling some distance to view. Please note that appliances and heating systems have not been tested and therefore no warranties can be given as to their good working order.

 **RICS** | Regulated  
Estate Agent  
and Letting Agent

[dexters.co.uk](https://www.dexters.co.uk)