

Woburn Place, WC1H

£285,000

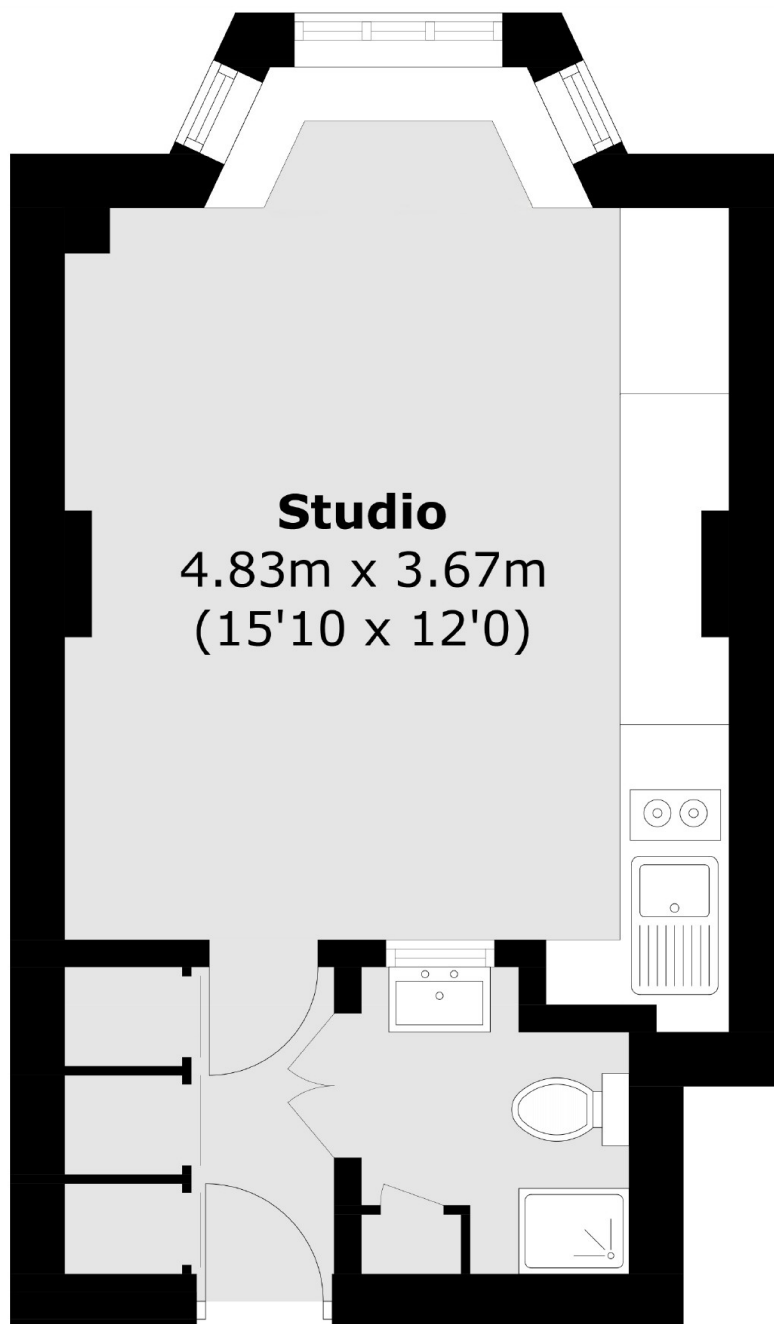
A third floor studio flat in this 1930s portered mansion block. In excellent condition throughout the flat benefits from ample storage, a bay window, built-in fold-away bed and washing machine.

Russell Court is a purpose-built mansion building moments from Russell Square and The Brunswick shopping centre which contains many well-known high street shops and restaurants including a Waitrose.

Features

- Studio Apartment
- Excellent Condition
- Share Of Freehold
- 24 Hr Porter
- Lift Access
- Heating Included

Woburn Place, London, WC1H



Total area (approx.): 21.0 sq. m (226.0 sq. ft)

Dexters

Bloomsbury
55-56 Coram Street
London
WC1N 1HB
Sales
020 7833 4466

Energy Rating: C. We aim to make our particulars both accurate and reliable. However they are not guaranteed; nor do they form part of an offer or contract. If you require clarification on any points then please contact us, especially if you're traveling some distance to view. Please note that appliances and heating systems have not been tested and therefore no warranties can be given as to their good working order.

 **RICS** | Regulated
Estate Agent
and Letting Agent

[dexters.co.uk](https://www.dexters.co.uk)