



Swinton Street, WC1X

£485 Per week

A well kept, spacious one bedroom flat with a separate kitchen and reception. This property boasts a large bedroom with plenty of storage space and wooden flooring running throughout.

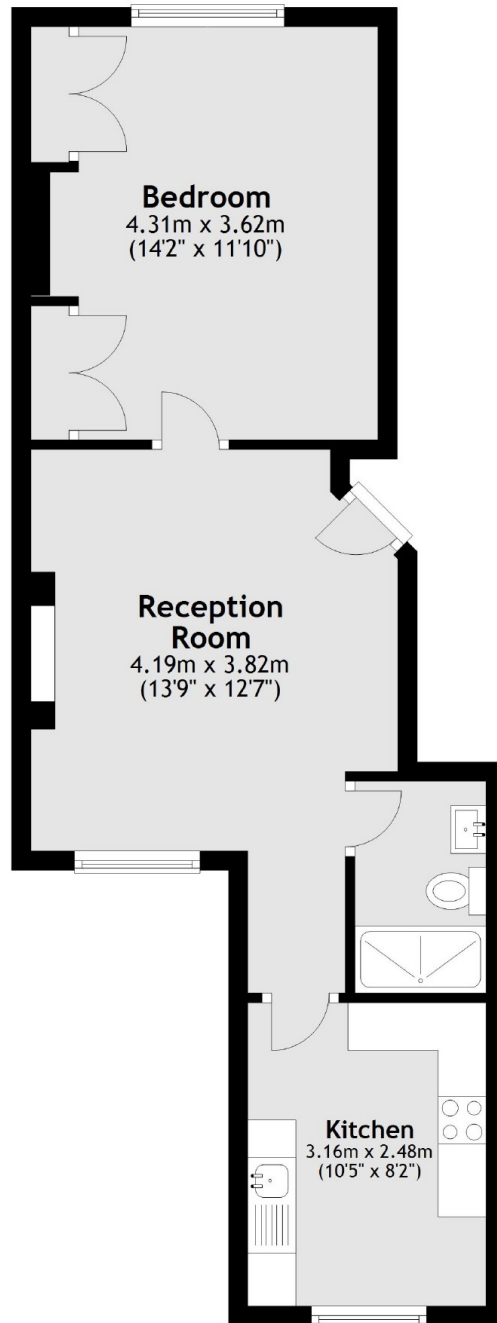
The flat is situated minutes away from Kings Cross and St Pancras station and is ideal for anyone who needs good transport links on their doorstep. With the Brunswick Centre close by too there are plenty of shops and restaurants nearby.

Features

- Great transport links
- Spacious Reception Room
- Separate Kitchen
- Wooden Floors
- Furnished
- High Ceilings

Swinton Street,
London, WC1X

Ground Floor



Total area: approx. 43.8 sq. metres (471.3 sq. feet)

Dexters

Bloomsbury
55-56 Coram Street
London
WC1N 1HB
Lettings
020 7833 4488

Energy Rating: D. We aim to make our particulars both accurate and reliable. However they are not guaranteed; nor do they form part of an offer or contract. If you require clarification on any points then please contact us, especially if you're traveling some distance to view. Please note that appliances and heating systems have not been tested and therefore no warranties can be given as to their good working order.

 **RICS** | Regulated
Estate Agent
and Letting Agent

dexters.co.uk